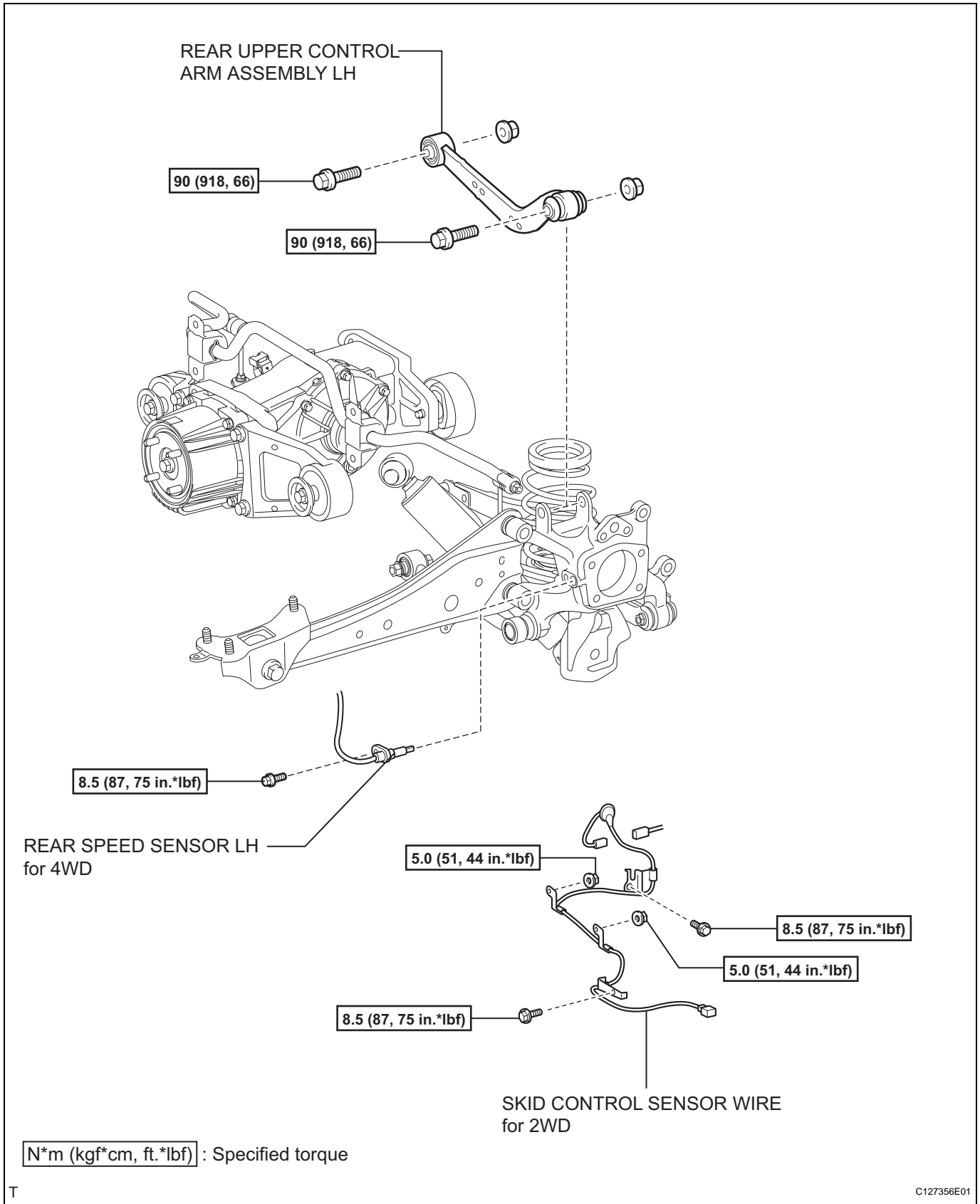


REAR UPPER CONTROL ARM

COMPONENTS



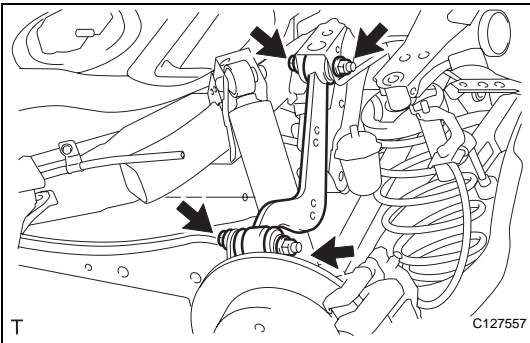
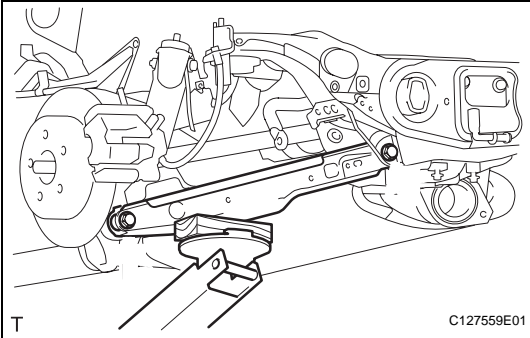
SP

REMOVAL

HINT:

- Use the same procedures for the RH side and LH side.
- The procedures listed below are for the LH side.

1. REMOVE REAR WHEEL
2. DISCONNECT SKID CONTROL SENSOR WIRE (for 2WD) (See page [BC-198](#))
3. DISCONNECT REAR SPEED SENSOR LH (for 4WD) (See page [BC-205](#))
4. REMOVE REAR UPPER CONTROL ARM ASSEMBLY LH
 - (a) Support the No. 2 suspension arm.



- (b) Remove the 2 bolts and 2 nuts, and disconnect the upper control arm.

NOTICE:

When removing the bolts, hold the nuts in place.