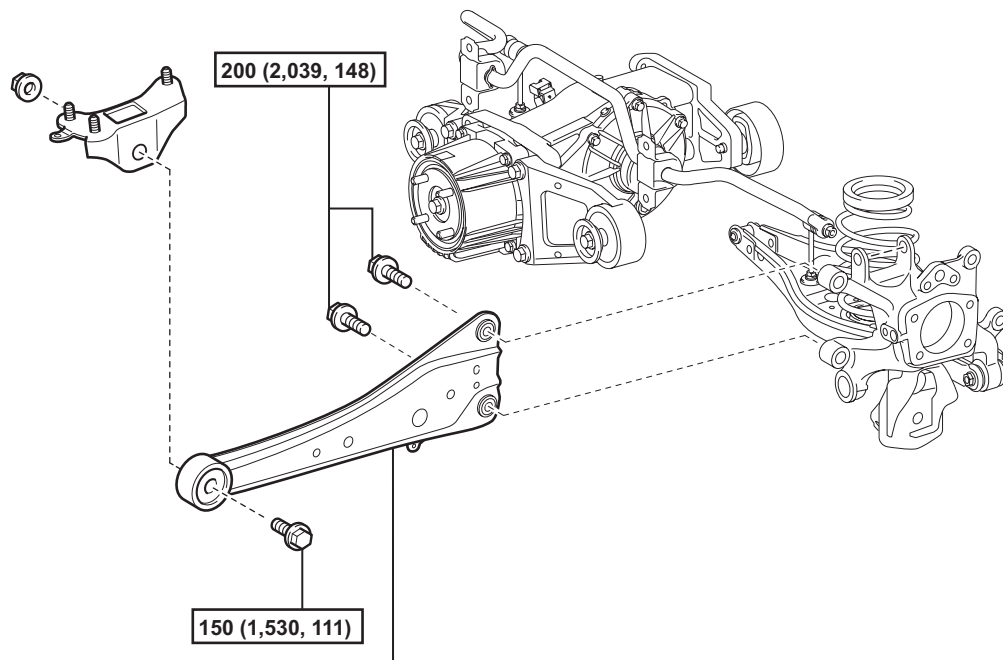
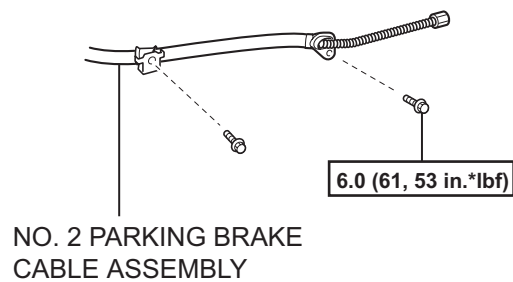


REAR TRAILING ARM

COMPONENTS



REAR TRAILING ARM ASSEMBLY LH



NO. 2 PARKING BRAKE
CABLE ASSEMBLY

N*m (kgf*cm, ft.*lbf) : Specified torque

REMOVAL

HINT:

- Use the same procedures for the RH side and LH side.
- The procedures listed below are for the LH side.

1. REMOVE REAR WHEEL

2. DISCONNECT NO. 2 PARKING BRAKE CABLE ASSEMBLY (See page [PB-8](#))

3. REMOVE REAR TRAILING ARM ASSEMBLY LH

- (a) Remove the 3 bolts, nut and trailing arm from the axle carrier and suspension arm bracket.

HINT:

While fixing the nut in place, loosen and remove the bolt.

