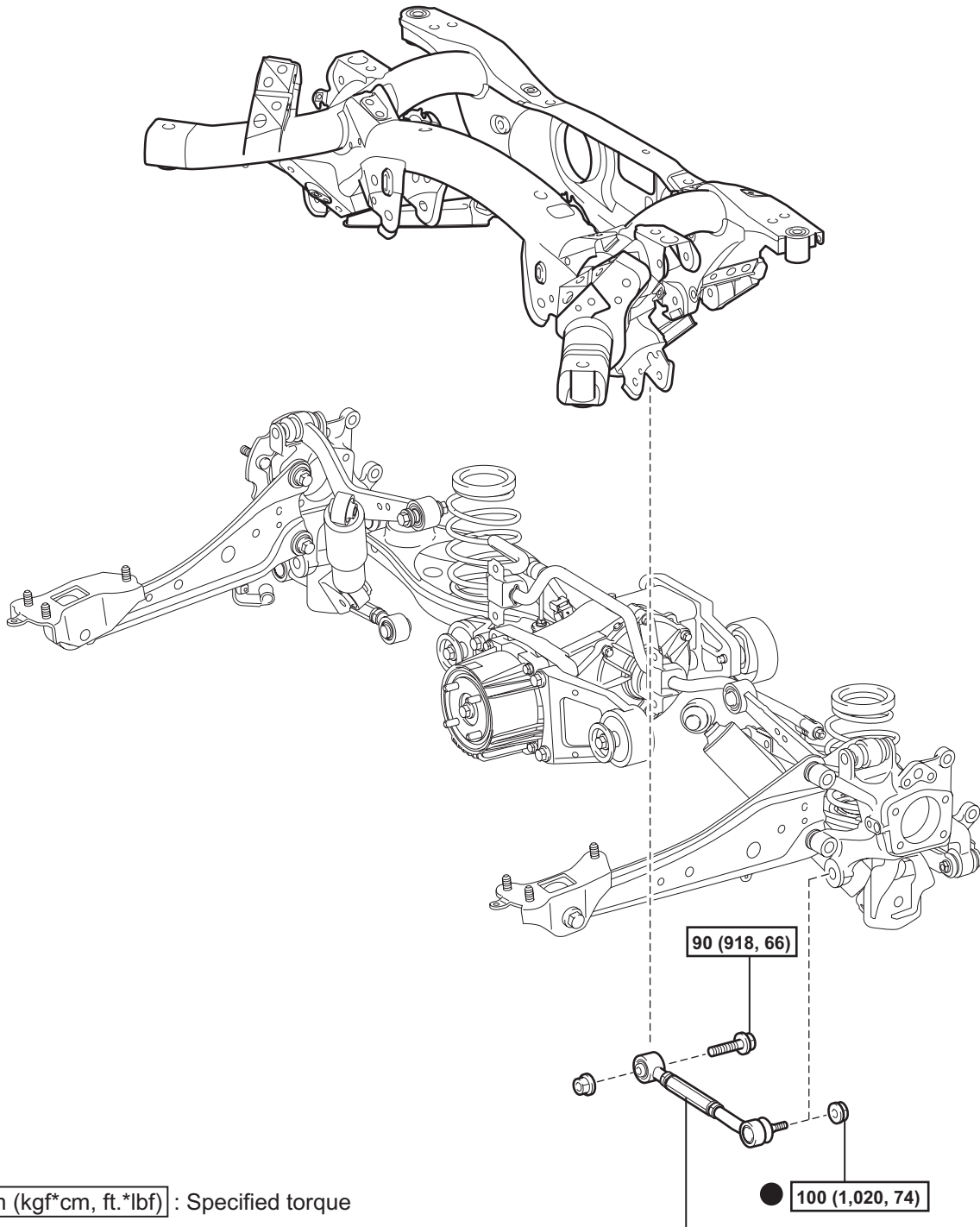


REAR NO. 1 SUSPENSION ARM

COMPONENTS



$\boxed{\text{N*m (kgf*cm, ft.*lbf)}}$: Specified torque

● Non-reusable part

REAR NO. 1 SUSPENSION ARM ASSEMBLY LH

T

C127357E01

SP

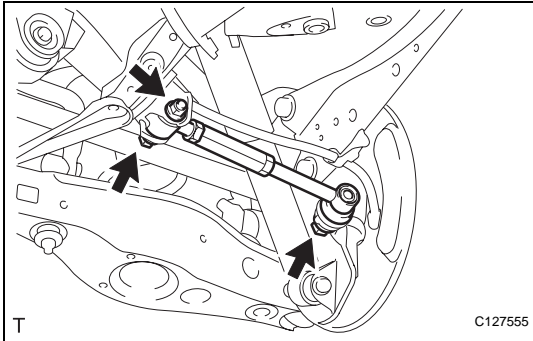
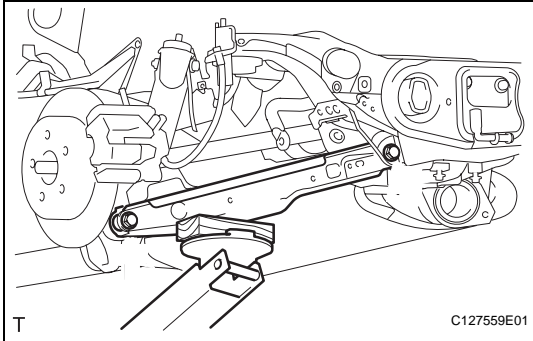
REMOVAL

HINT:

- Use the same procedures for the RH side and LH side.
- The procedures listed below are for the LH side.

1. REMOVE REAR WHEEL
2. REMOVE REAR NO. 1 SUSPENSION ARM
ASSEMBLY LH

(a) Support the No. 2 suspension arm LH.



(b) Remove the bolt and 2 nuts from the suspension member and axle carrier.

HINT:

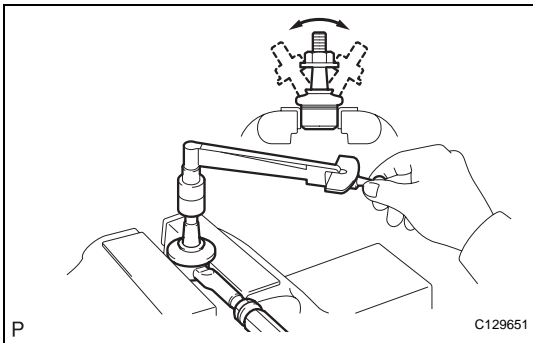
While fixing the nut in place, loosen and remove the bolt from the suspension member side.

(c) Using SST, disconnect the suspension arm from the axle carrier.

SST 09610-20012

NOTICE:

Do not damage the dust cover.



INSPECTION

1. INSPECT REAR NO. 1 SUSPENSION ARM
ASSEMBLY LH

(a) As shown in the illustration, move the ball joint stud back and forth 5 times before installing the nut.

(b) Using a torque wrench, turn the nut continuously at a rate of 2 to 4 seconds per turn and take the torque reading on the fifth turn.

Standard turning torque:

3.4 N*m (35 kgf*cm, 30 in.*lbf)

(c) Check for any cracks and grease leaks on the ball joint dust cover.