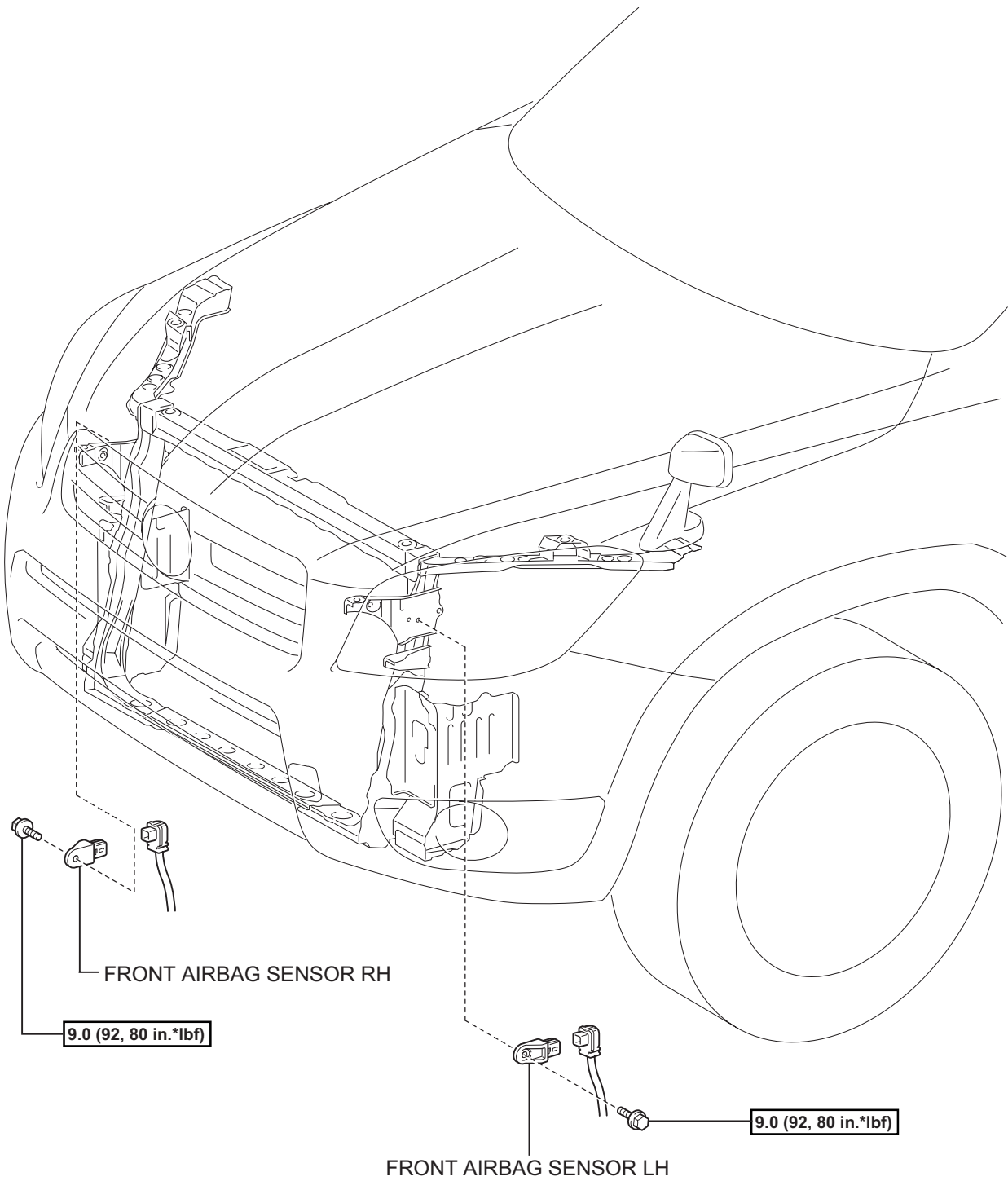


FRONT AIRBAG SENSOR

COMPONENTS



N*m (kgf*cm, ft.*lbf) : Specified torque

ON-VEHICLE INSPECTION

1. **CHECK FRONT AIRBAG SENSOR (VEHICLE NOT INVOLVED IN COLLISION AND AIRBAG NOT DEPLOYED)**
 - (a) Perform a diagnostic system check (see page [RS-49](#)).
2. **CHECK FRONT AIRBAG SENSOR (VEHICLE INVOLVED IN COLLISION AND AIRBAG HAS NOT DEPLOYED)**
 - (a) Perform a diagnostic system check (see page [RS-49](#)).
 - (b) If the front fender of the vehicle or its periphery are damaged, perform a visual check:
 - Check for cracks, dents or chips in the case.
 - Check for cracks, dents, chips and scratches in the connector.
 - Check for peeling off of the label or damage to the serial number.If any of the defects mentioned above are present, replace the front airbag sensor with a new one.
3. **CHECK FRONT AIRBAG SENSOR (VEHICLE INVOLVED IN COLLISION AND AIRBAG HAS DEPLOYED)**
 - (a) Replace the front airbag sensor.

CAUTION:
For removal and installation of the front airbag sensor, be sure to follow the correct procedures.

HINT:
If the airbags have deployed, replace the front airbag sensor on the side in which the collision occurred. Replace both if necessary.