

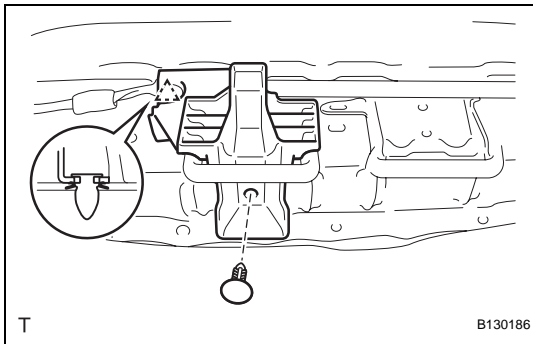
INSTALLATION

HINT:

- Use the same procedures for the RH side and LH side.
- The procedures listed below are for the LH side.

1. INSTALL NO. 2 SEAT LEG BOX PROTECTOR

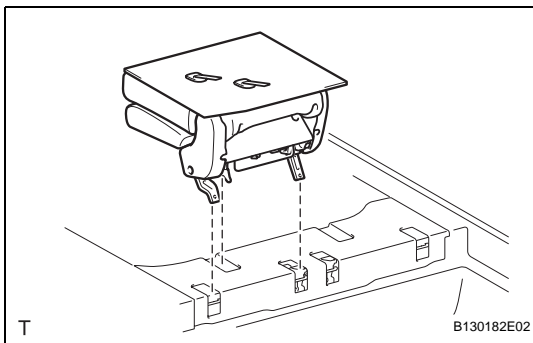
- Attach the clip to install the protector.
- Install the clip.



2. INSTALL REAR NO. 1 FLOOR MAT SUPPORT SIDE PLATE

3. INSTALL REAR NO. 2 SEAT ASSEMBLY

- Fully tilt the seatback forward.

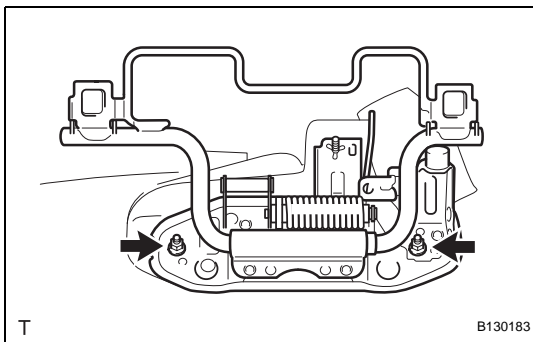


- Place the seat onto the lock striker.
- Fully lock the seat to the lock striker.

HINT:

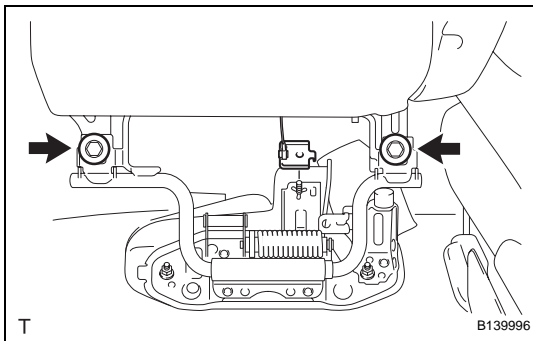
- Lock the rear side, then lock the front side.
- Confirm that the seat is firmly locked to the lock striker.

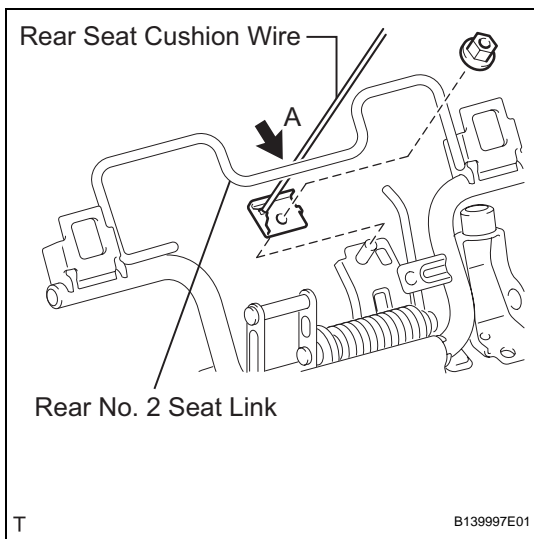
- Install the rear No. 2 seat link with the 2 nuts.
Torque: 18 N*m (184 kgf*cm, 13 ft.*lbf)



- Install the seat to the rear No. 2 seat link with the 2 bolts.

Torque: 18 N*m (184 kgf*cm, 13 ft.*lbf)





- (f) Pass the rear seat cushion wire underneath the rear No. 2 seat link part labeled A.

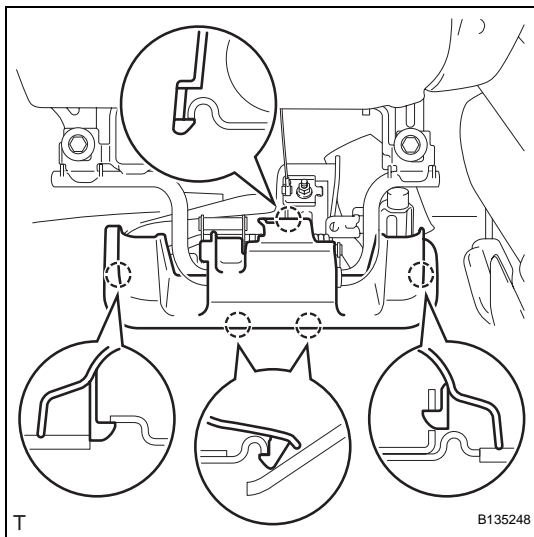
NOTICE:

If the wire is not installed as described, the seat will not move properly.

- (g) Install the rear seat cushion wire to the rear No. 2 seat link with the nut.

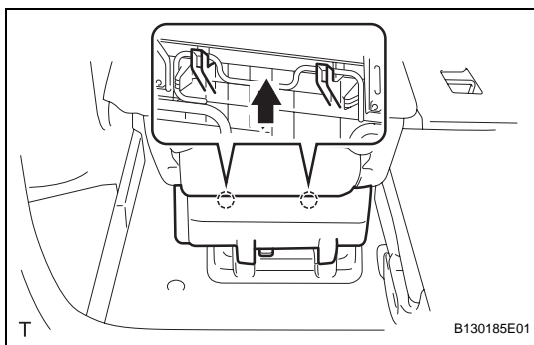
Torque: 18 N*m (184 kgf*cm, 13 ft.*lbf)

SE



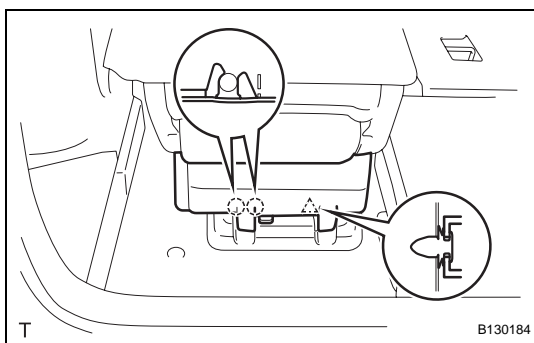
4. INSTALL NO. 2 SEAT LEG COVER LH

- (a) Attach the 5 claws to install the leg cover.



5. INSTALL NO. 2 SEAT HINGE COVER LH

- (a) Push the hinge cover in the direction indicated by the arrow in the illustration to attach the 2 claws.



- (b) Attach the 2 claws and clip to install the hinge cover.
- (c) Return the seatback to the upright position.