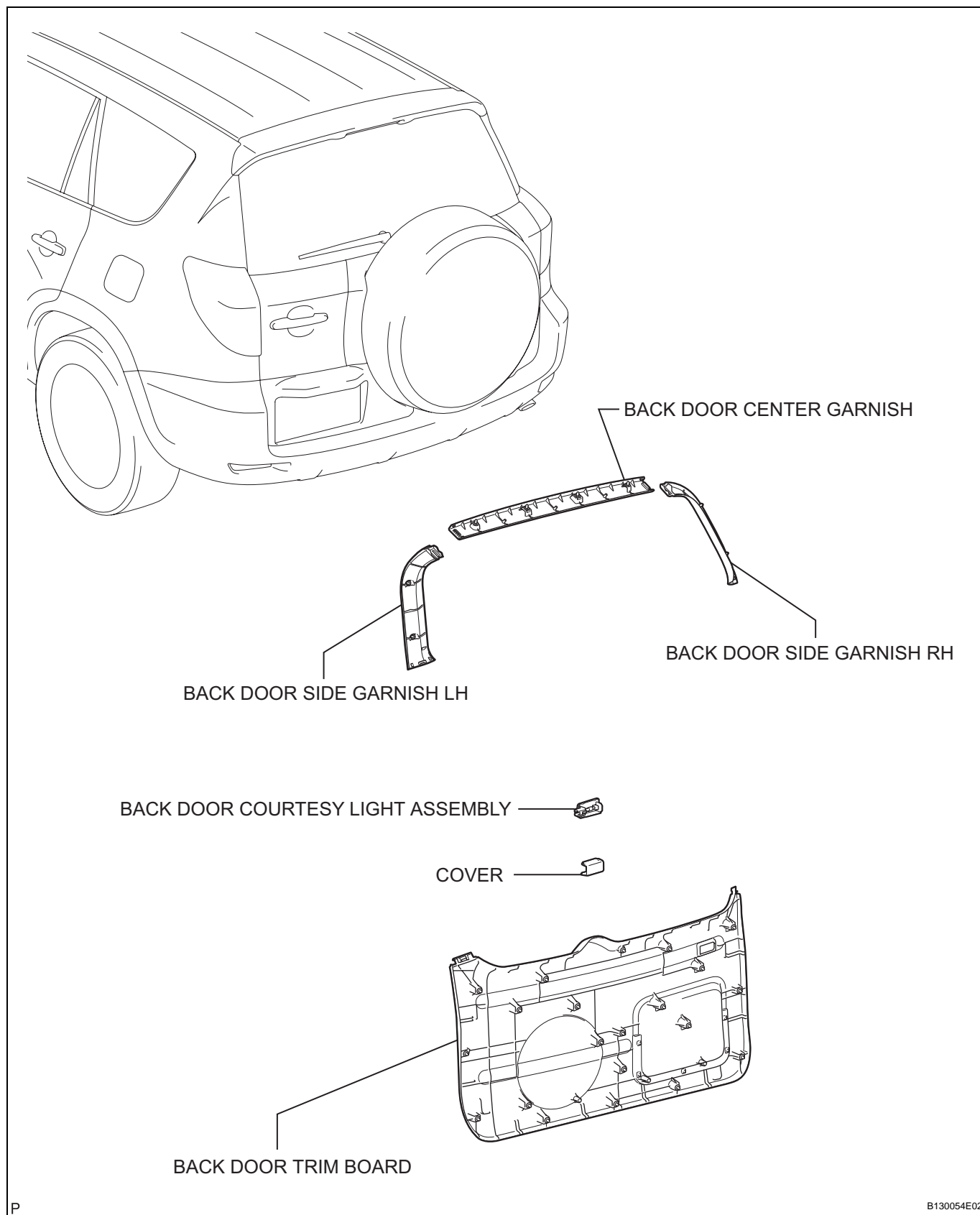


LUGGAGE ROOM LIGHT

COMPONENTS



REMOVAL

1. DISCONNECT CABLE FROM NEGATIVE BATTERY TERMINAL

CAUTION:

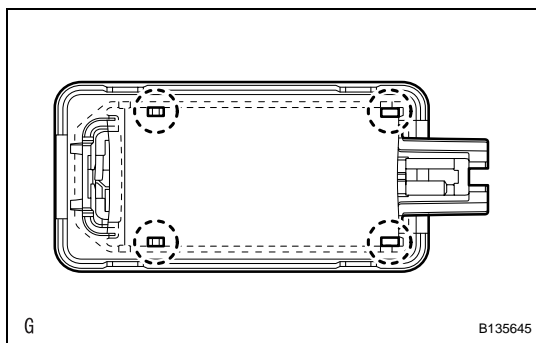
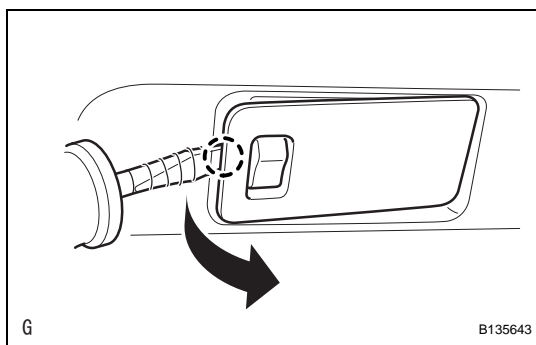
Wait at least 90 seconds after disconnecting the cable from the negative (-) battery terminal to prevent airbag and seat belt pretensioner activation.

2. REMOVE BACK DOOR CENTER GARNISH (See page [ED-59](#))
3. REMOVE BACK DOOR SIDE GARNISH LH (See page [ED-59](#))
4. REMOVE BACK DOOR SIDE GARNISH RH (See page [ED-59](#))
5. REMOVE BACK DOOR TRIM BOARD (See page [ED-59](#))
6. REMOVE BACK DOOR COURTESY LIGHT ASSEMBLY

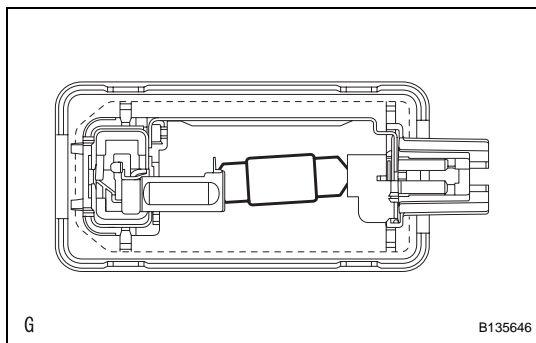
- (a) Using a screwdriver, pry out the light as shown in the illustration.

HINT:

Tape the screwdriver tip before use.



- (b) Detach the 4 claws and remove the light shade.



- (c) Remove the light bulb from the light.