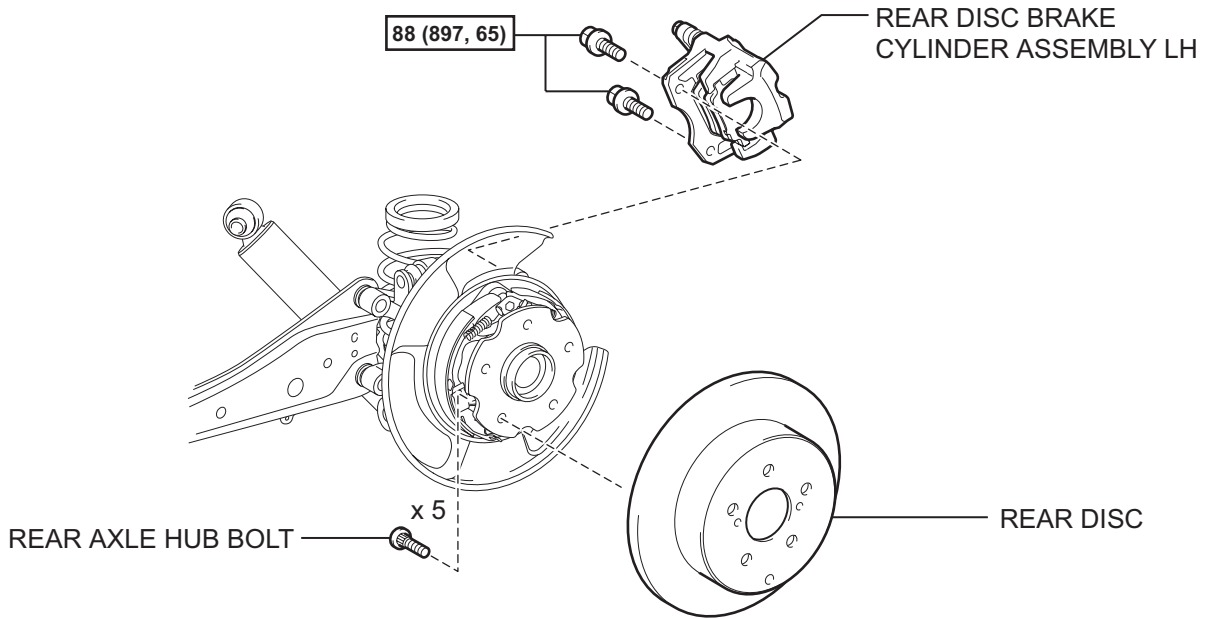


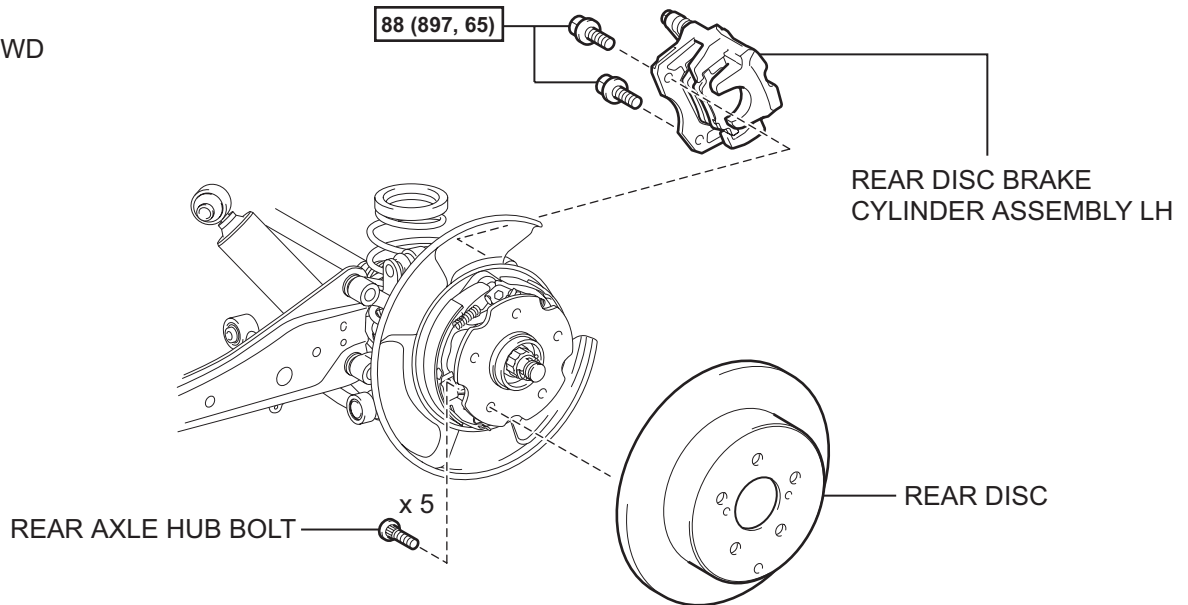
# REAR AXLE HUB BOLT

## COMPONENTS

for 2WD



for 4WD



**N\*m (kgf\*cm, ft.\*lbf)** : Specified torque

AH

## REPLACEMENT

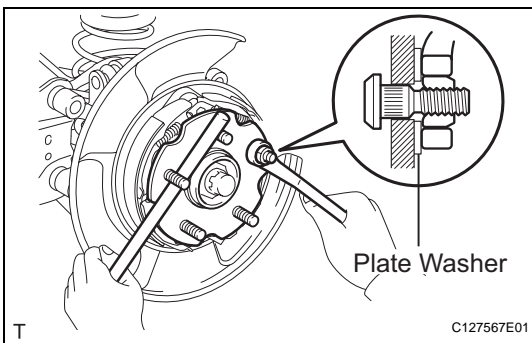
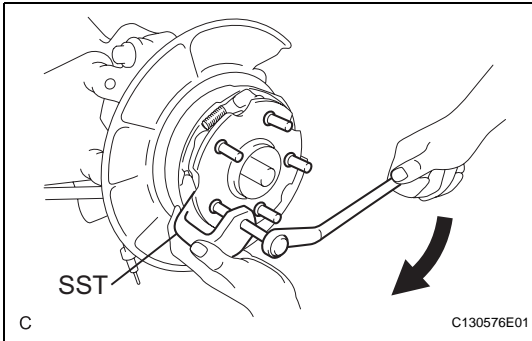
### HINT:

- Use the same procedures for the RH side and LH side.
- The procedures listed below are for the LH side.

1. REMOVE REAR WHEEL
2. REMOVE REAR DISC BRAKE CYLINDER ASSEMBLY LH (See page BR-55)
3. REMOVE REAR DISC (See page BR-57)
4. REMOVE REAR AXLE HUB BOLT

- (a) Using SST and a brass bar or equivalent to hold the axle shaft, remove the hub bolt that needs to be replaced.

**SST 09650-17011**



5. INSTALL REAR AXLE HUB BOLT
  - (a) Insert a new hub bolt into the bolt hole. Set a plate washer and nut on the hub bolt end.
  - (b) Using a brass bar or equivalent to hold the rear axle, install the hub bolt by tightening the nut. Then remove the nut and plate washer.
6. INSTALL REAR DISC (See page BR-58)
7. INSTALL REAR DISC BRAKE CYLINDER ASSEMBLY LH (See page BR-61)
8. INSTALL REAR WHEEL
 

Torque: 103 N\*m (1,050 kgf\*cm, 76 ft.\*lbf)