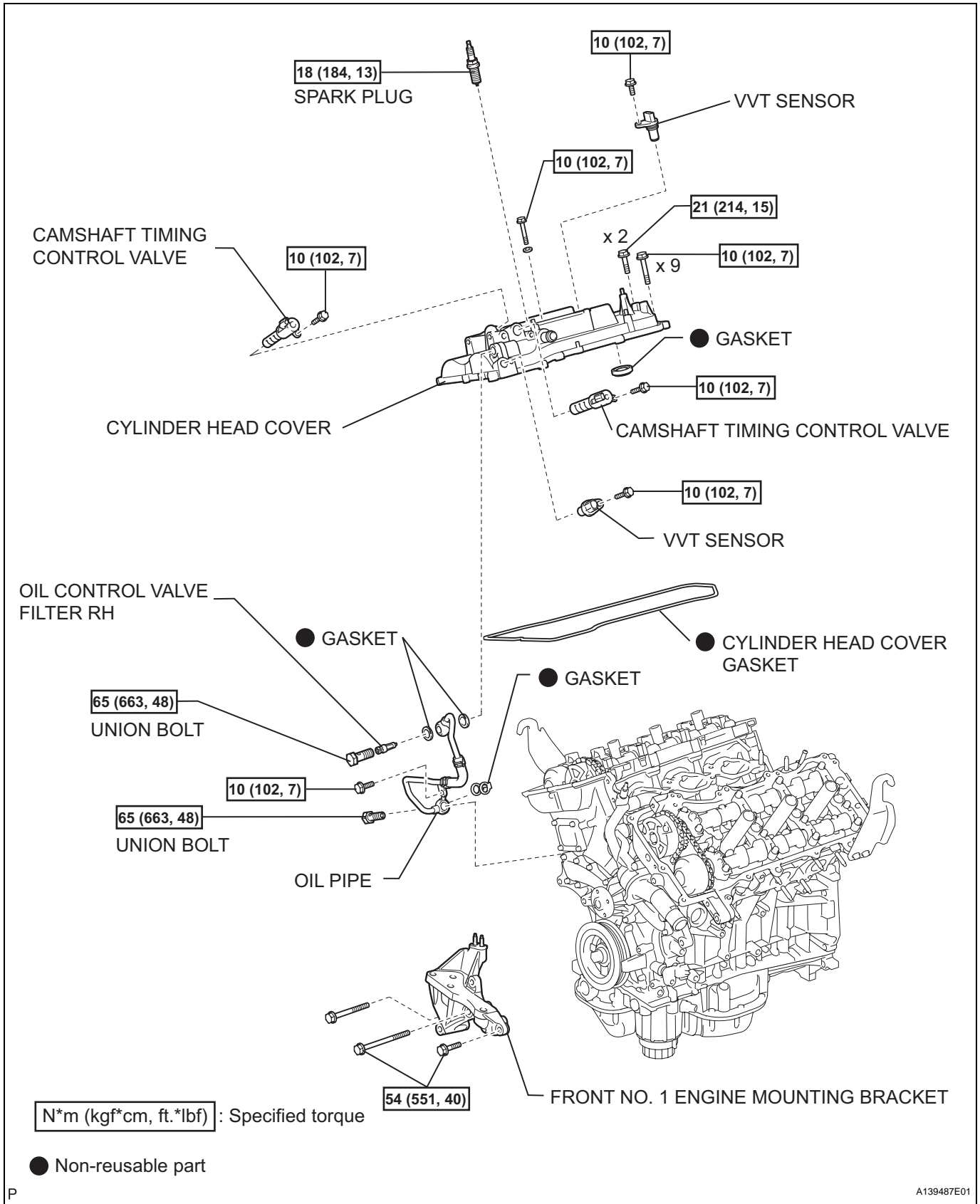
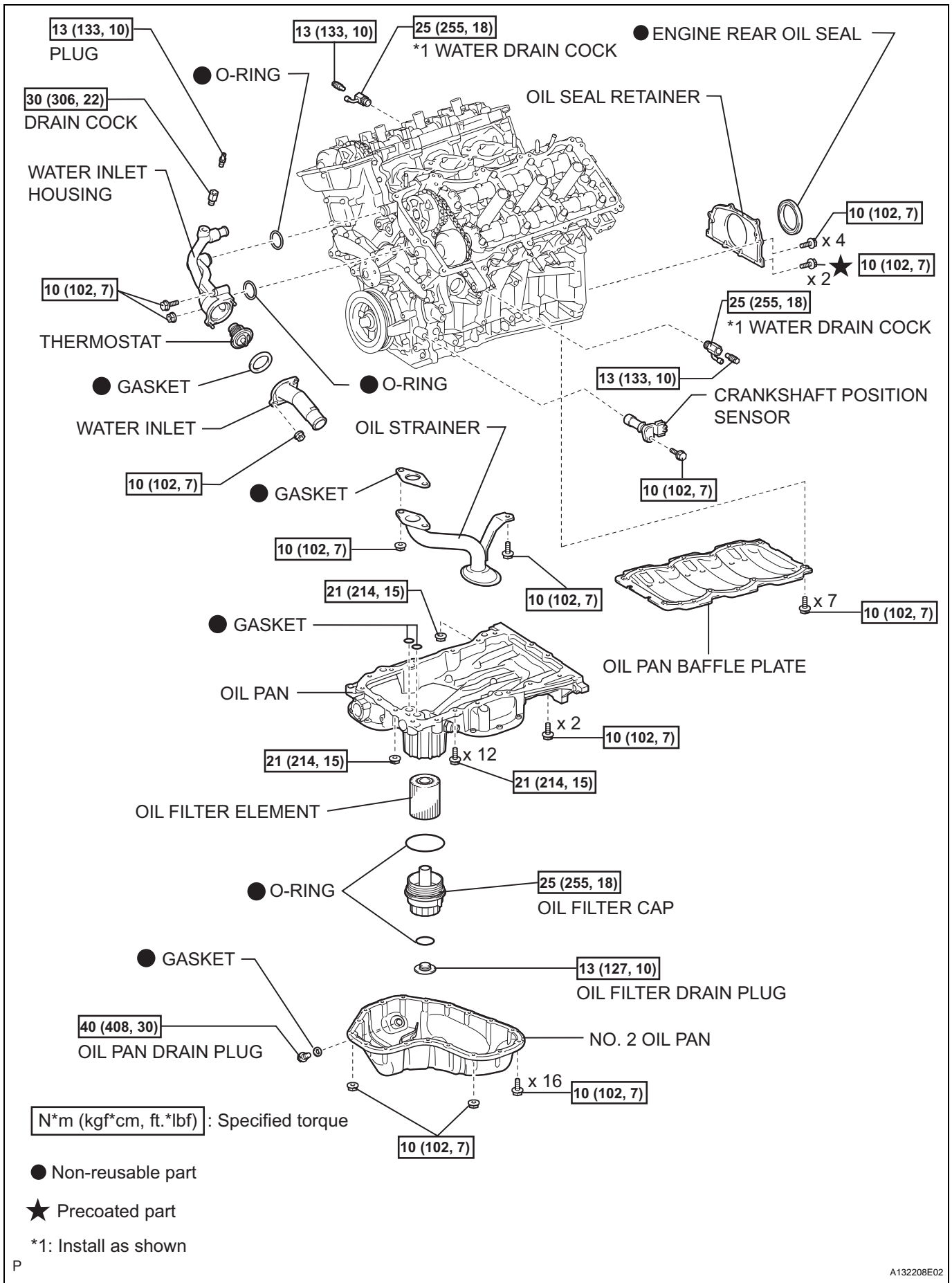


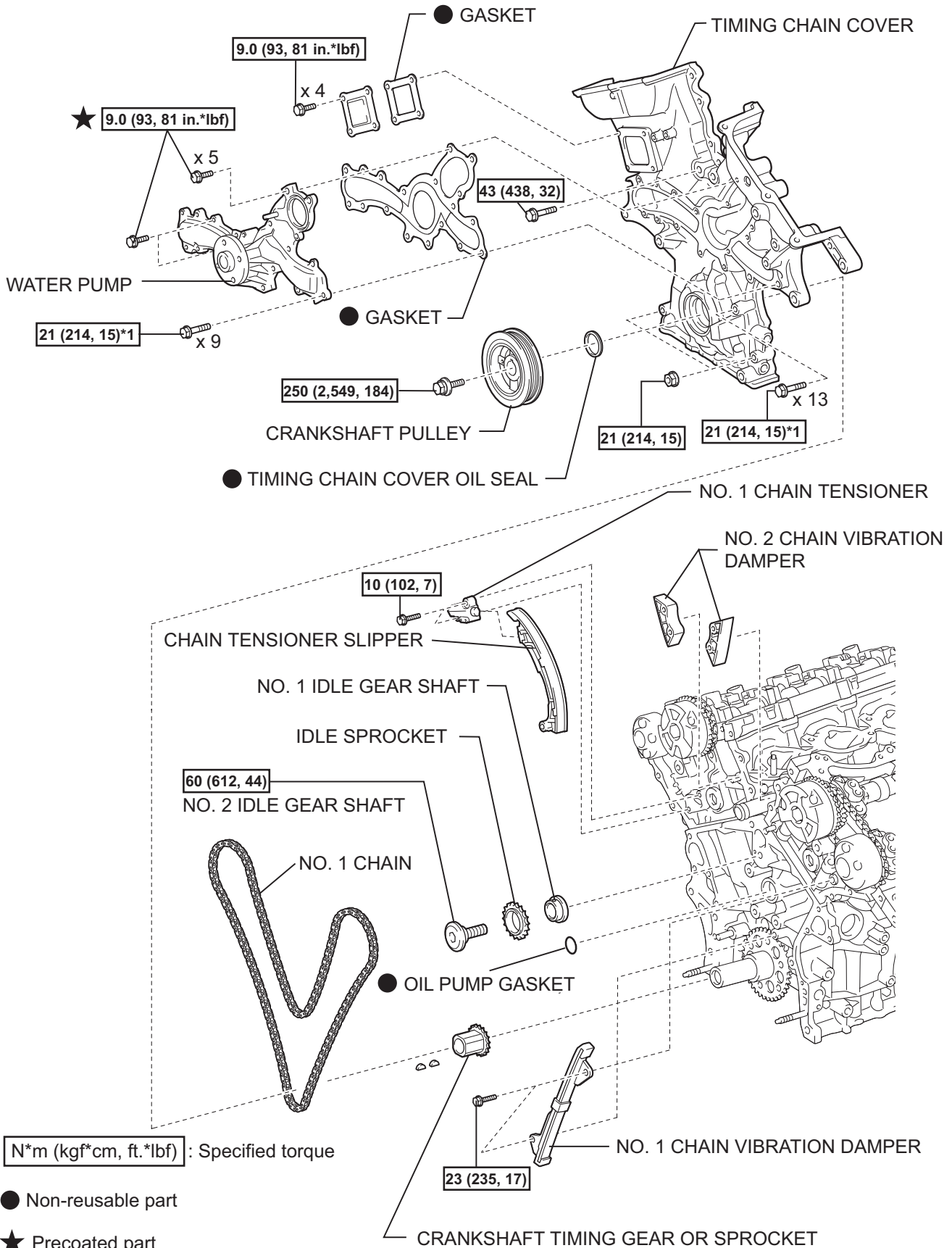
ENGINE UNIT COMPONENTS



EM



EM



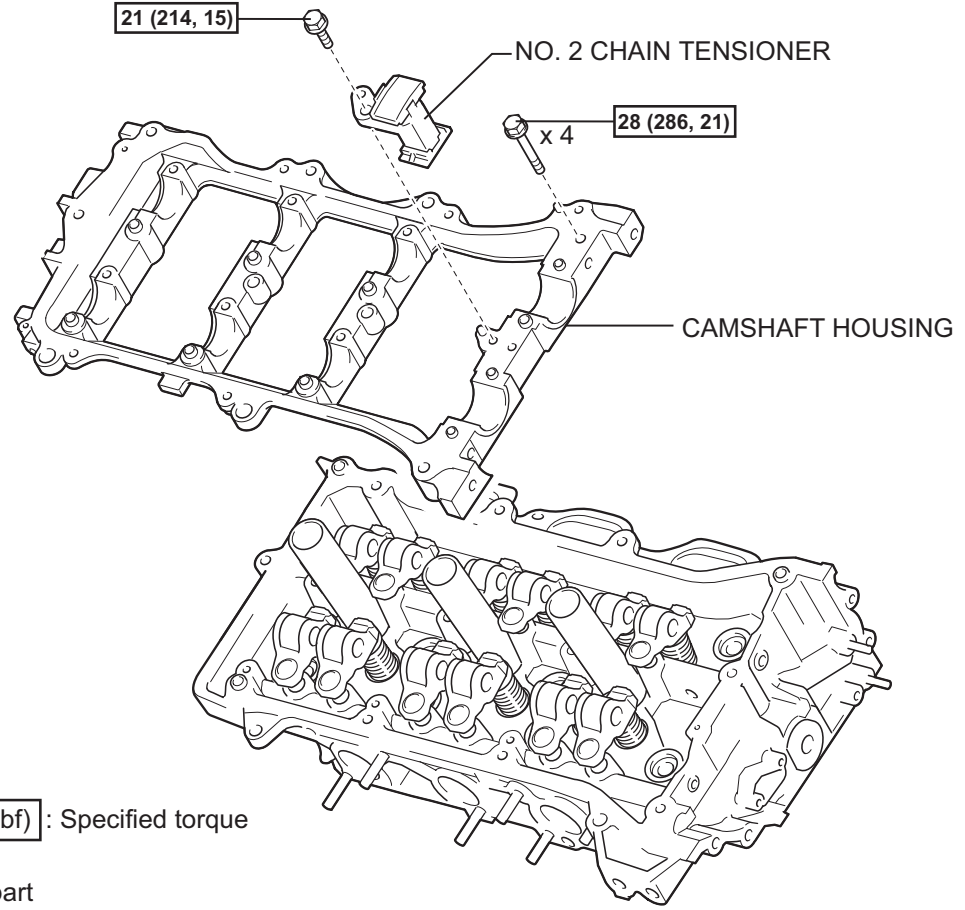
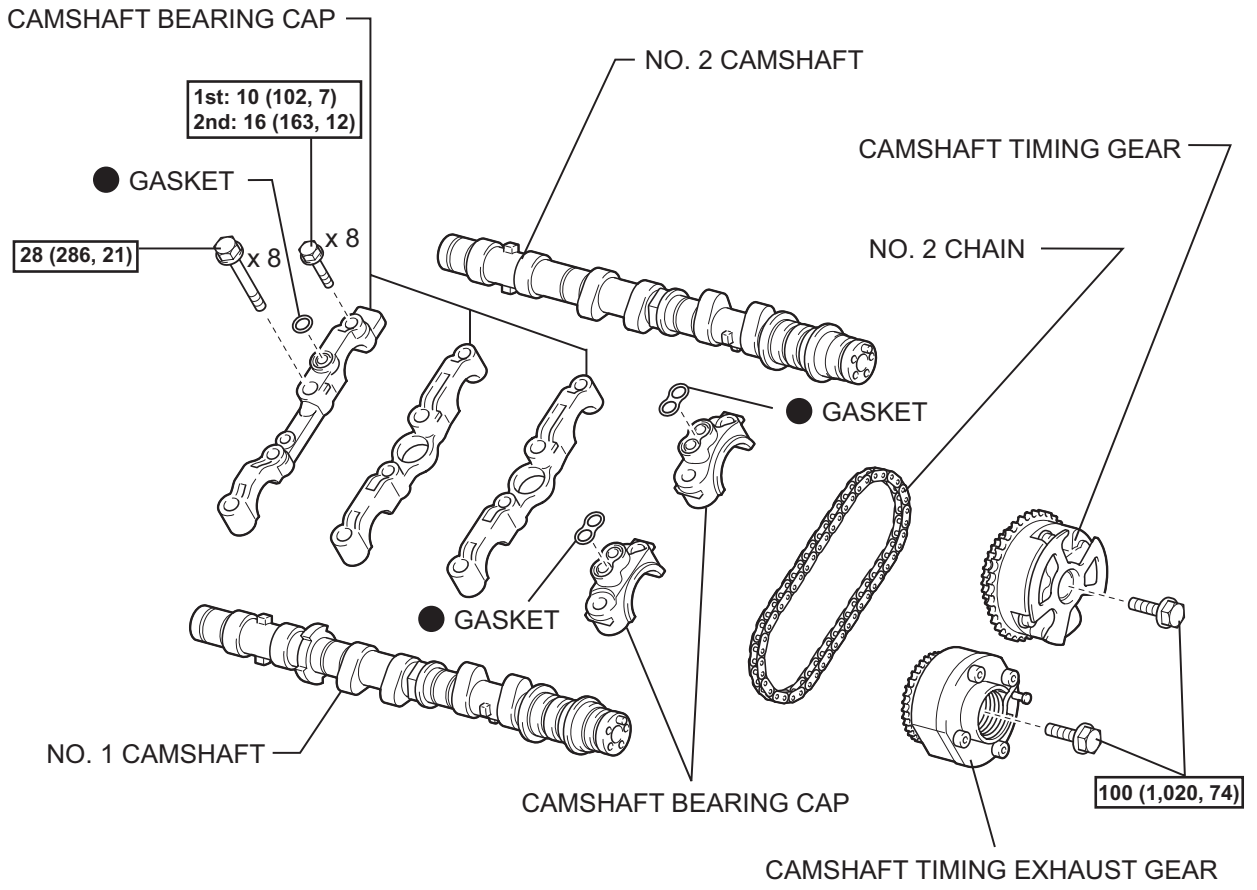
N*m (kgf*cm, ft.*lbf) : Specified torque

● Non-reusable part

★ Precoated part

*1: Do not allow oil to contact these bolts

EM

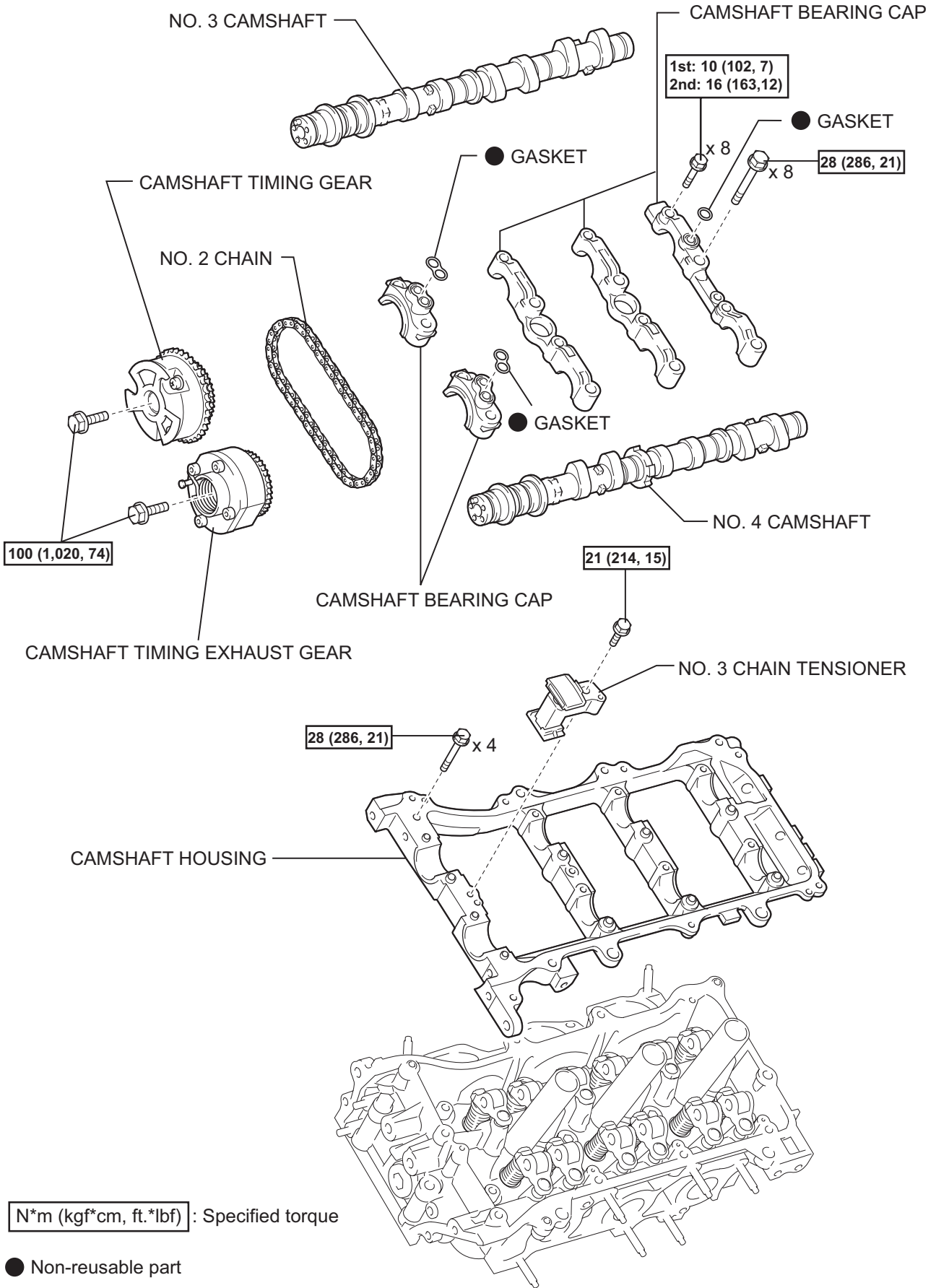


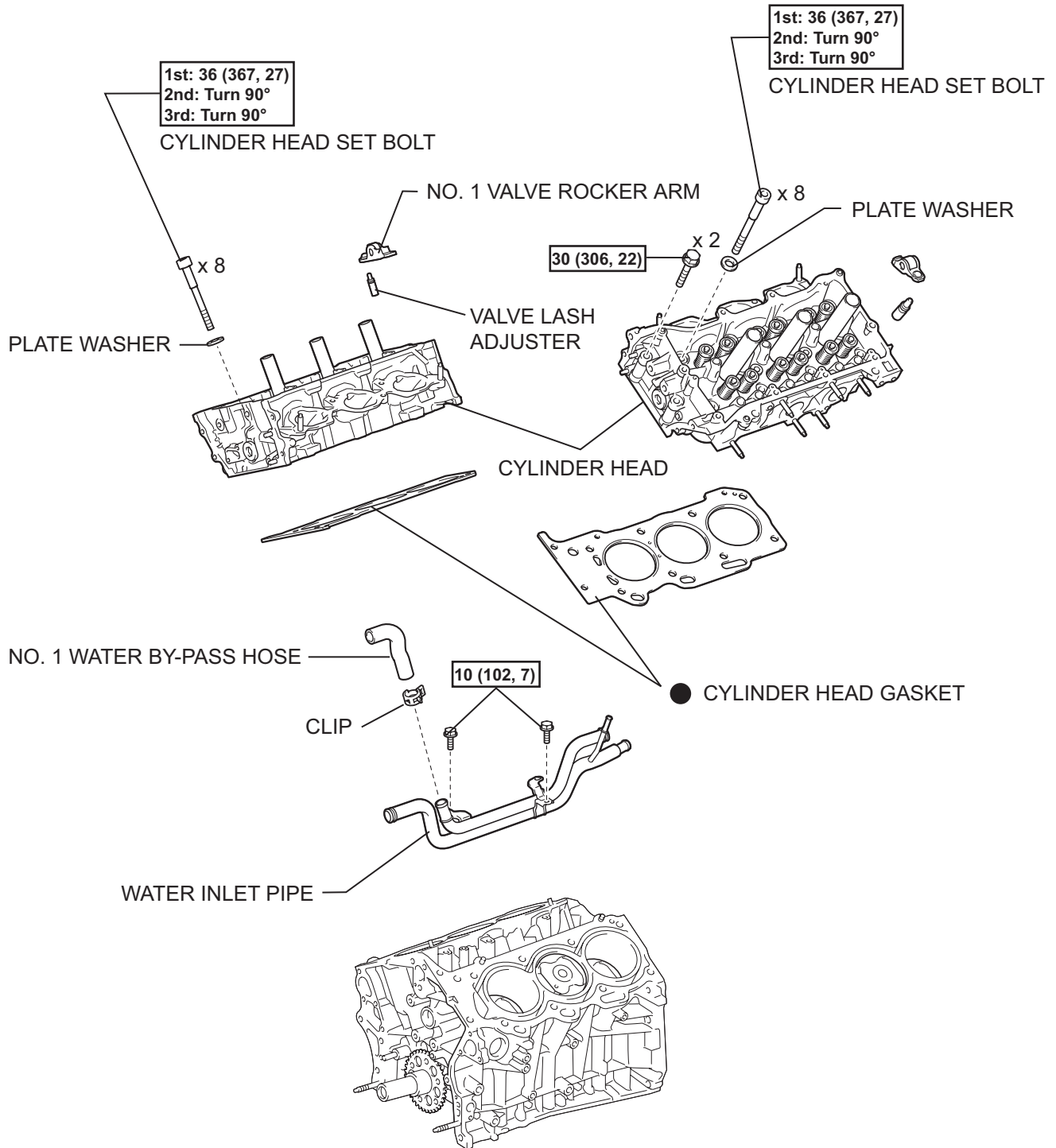
N*m (kgf*cm, ft.*lbf) : Specified torque

● Non-reusable part

EM

EM

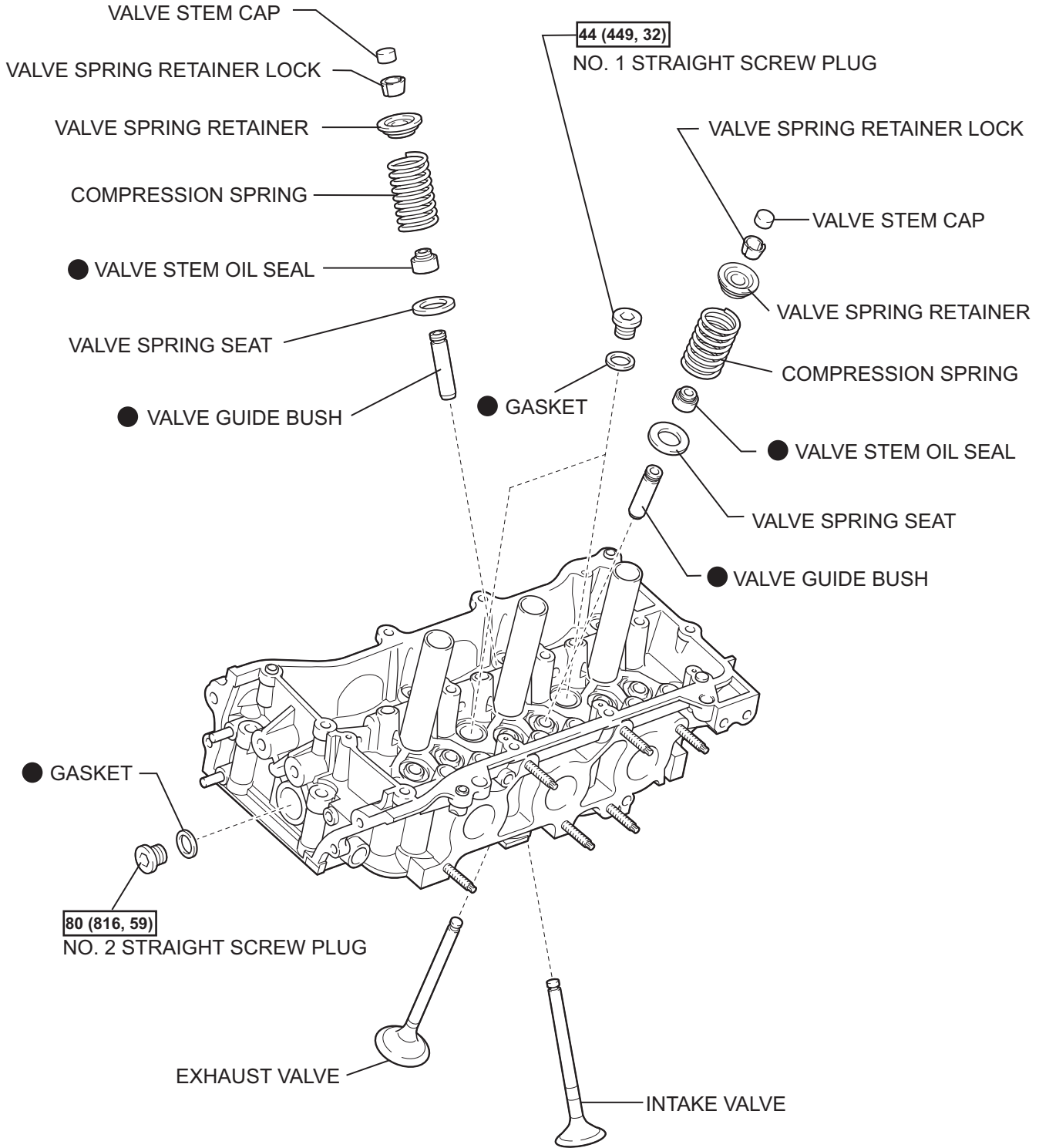




EM

N*m (kgf*cm, ft.*lbf) : Specified torque

● Non-reusable part



EM

80 (816, 59) : Specified torque

● Non-reusable part

EM

