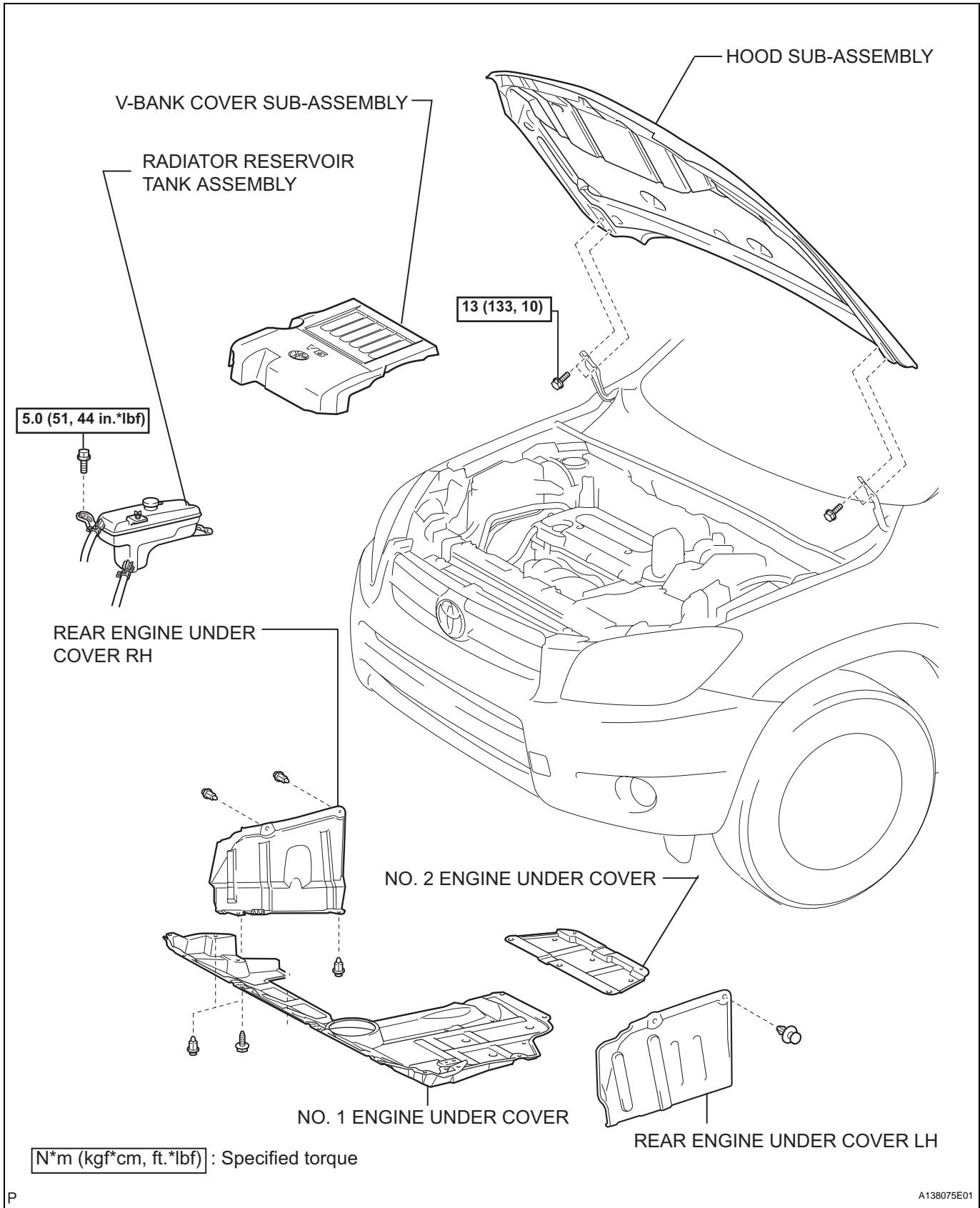
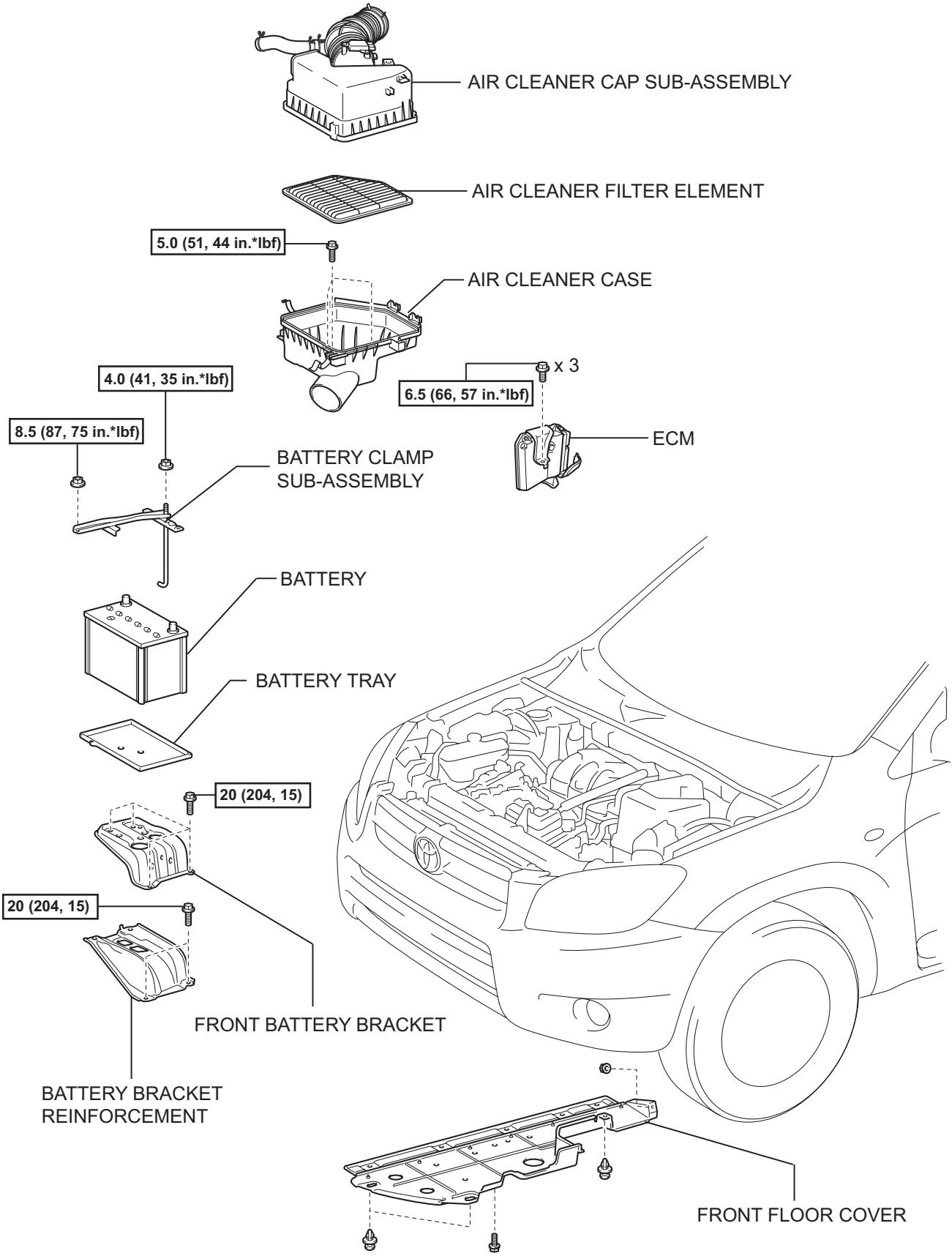


ENGINE ASSEMBLY

COMPONENTS

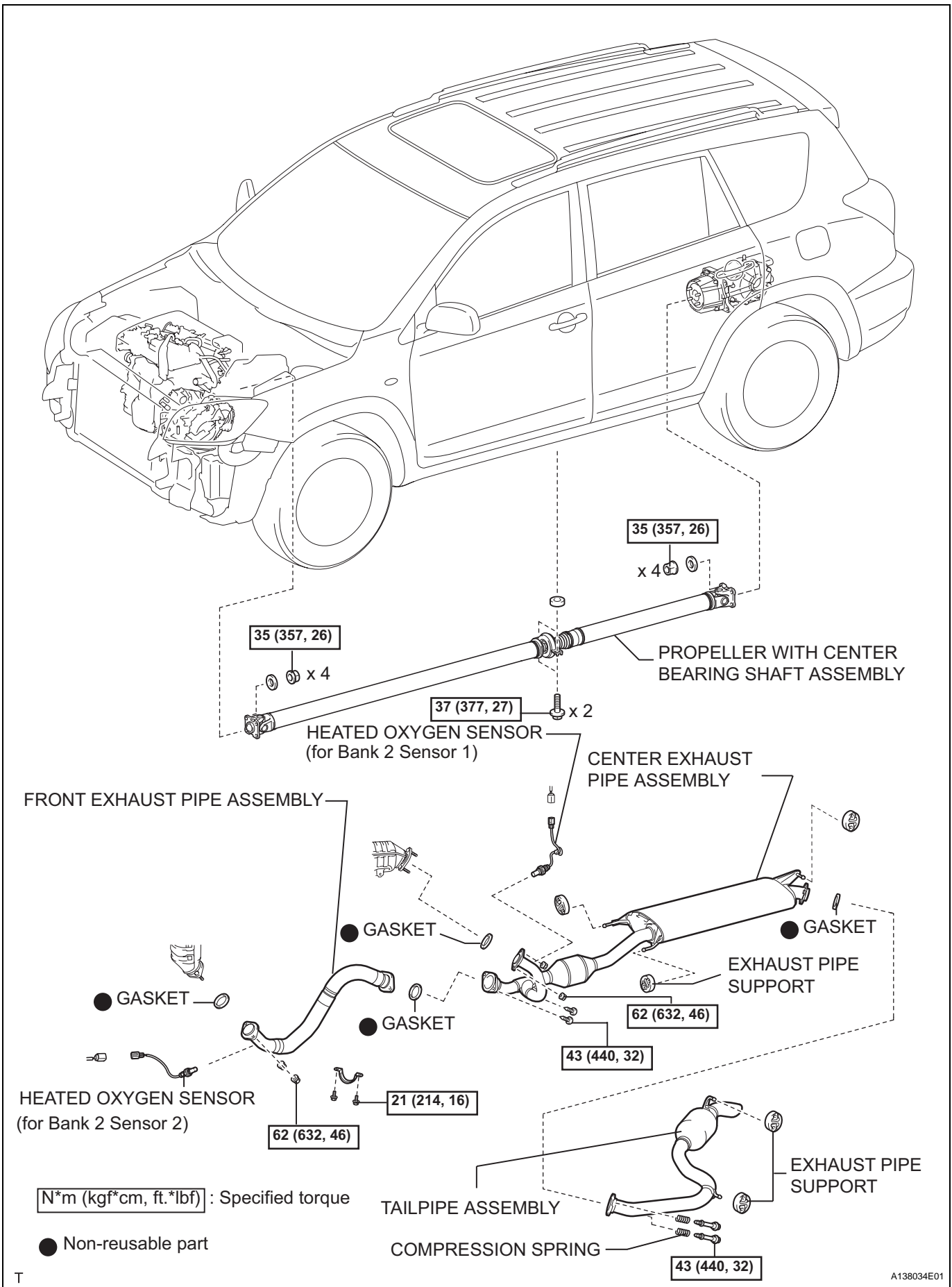
EM





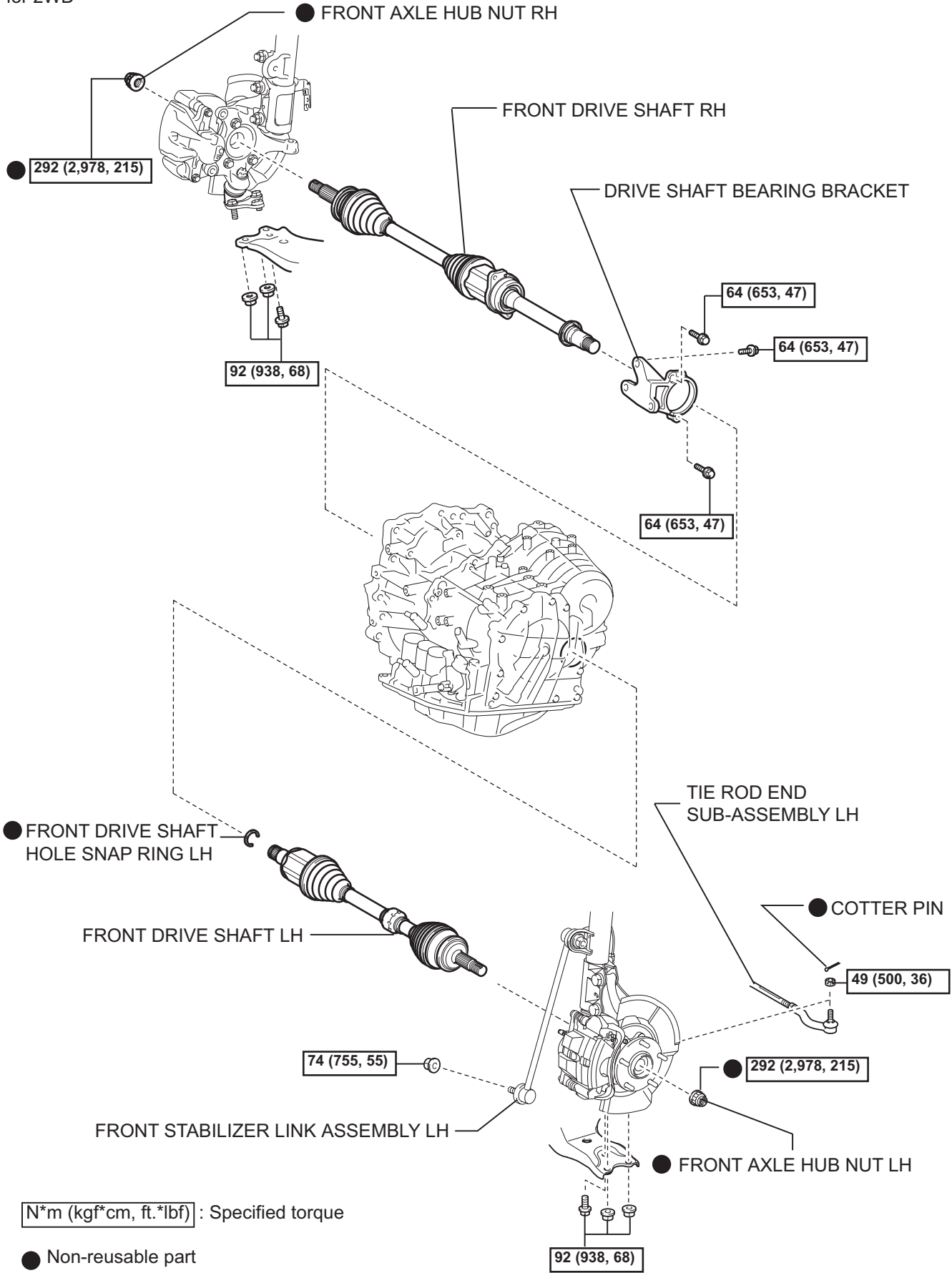
N*m (kgf*cm, ft.*lbf) : Specified torque

EM



T

for 2WD

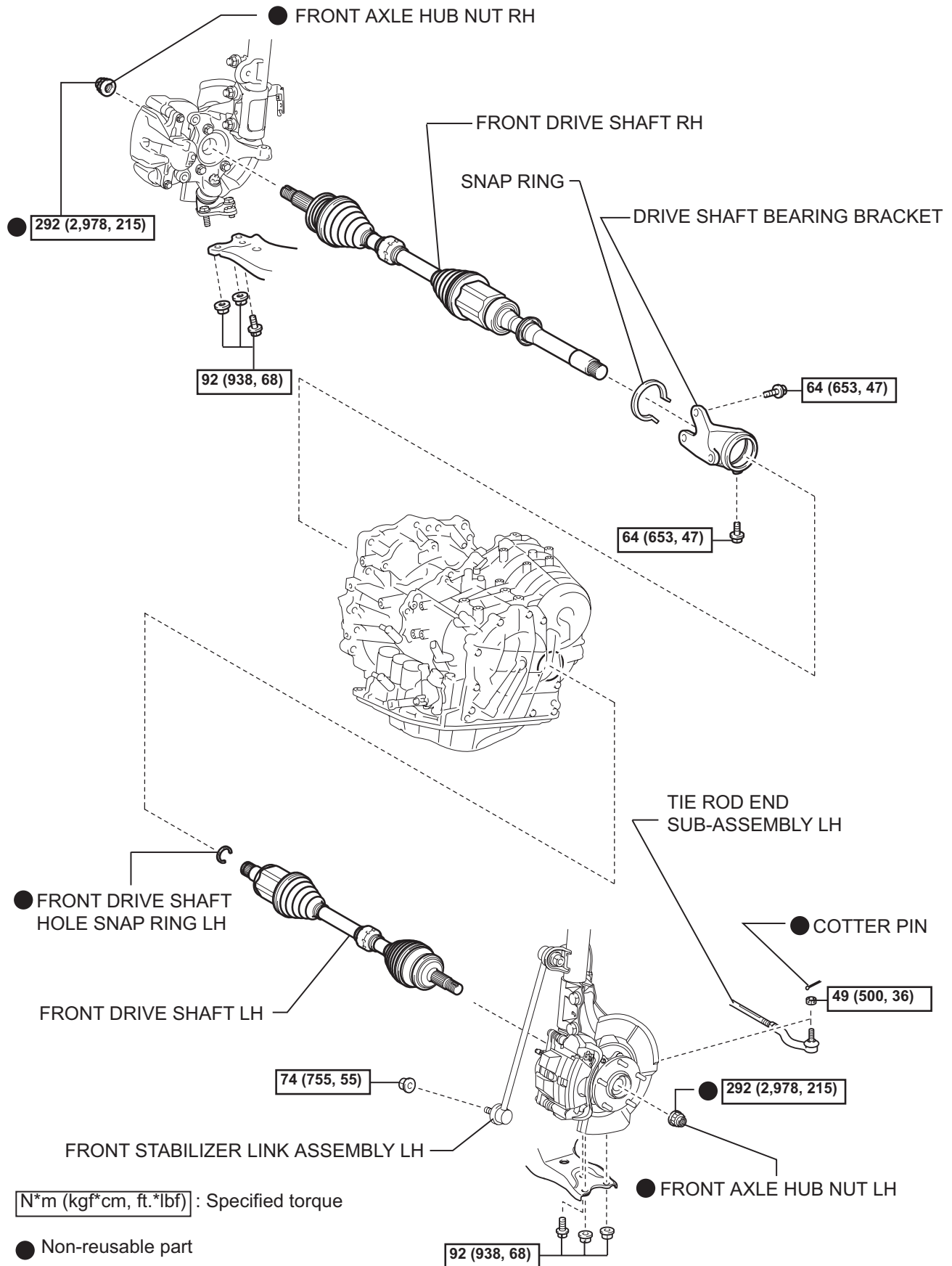


[N*m (kgf*cm, ft.*lbf)]: Specified torque

● Non-reusable part

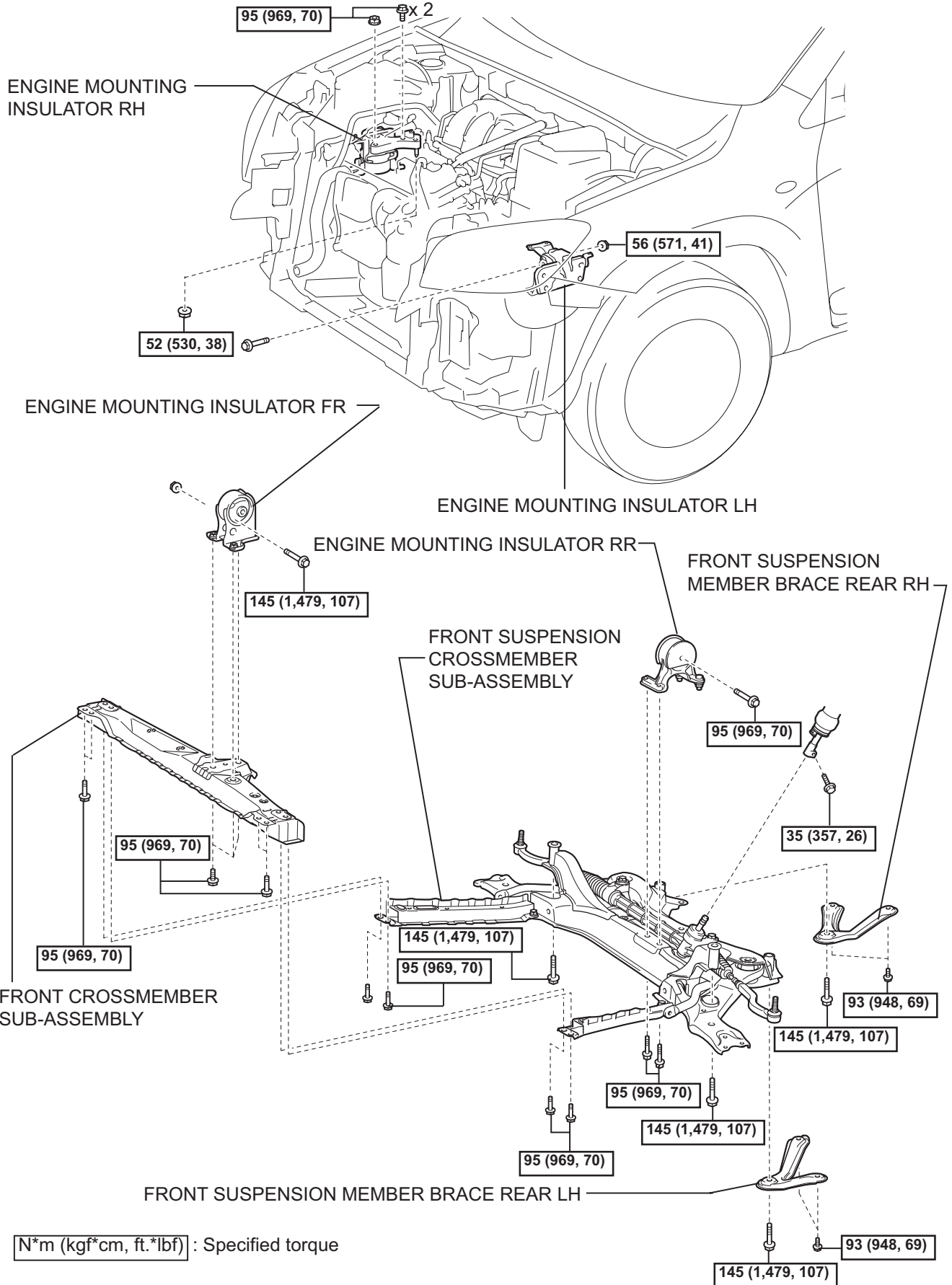
EM

for 4WD

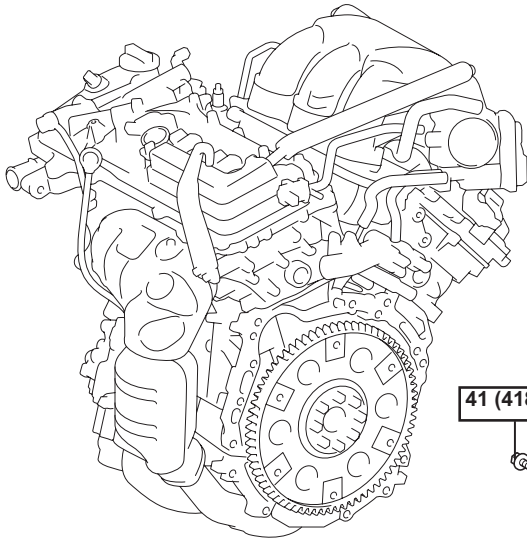
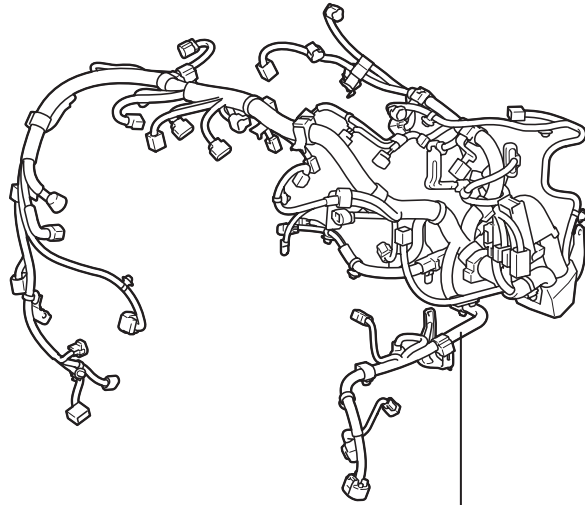
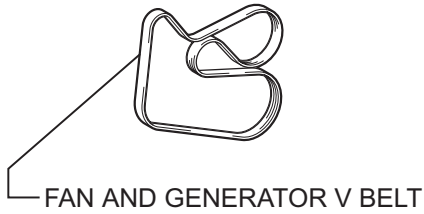


EM

T

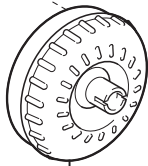


for 2WD



41 (418, 30)

x 3



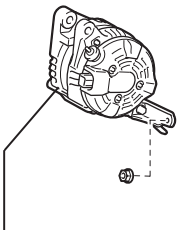
64 (653, 47)

x 7

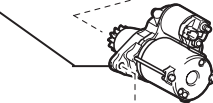
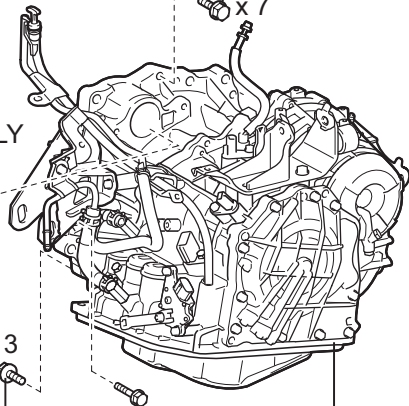
FLYWHEEL HOUSING UNDER COVER



STARTER ASSEMBLY



GENERATOR ASSEMBLY



COMPRESSOR WITH PULLEY ASSEMBLY



O-RING

x 3

x 2

37 (377, 27)

37 (377, 27)

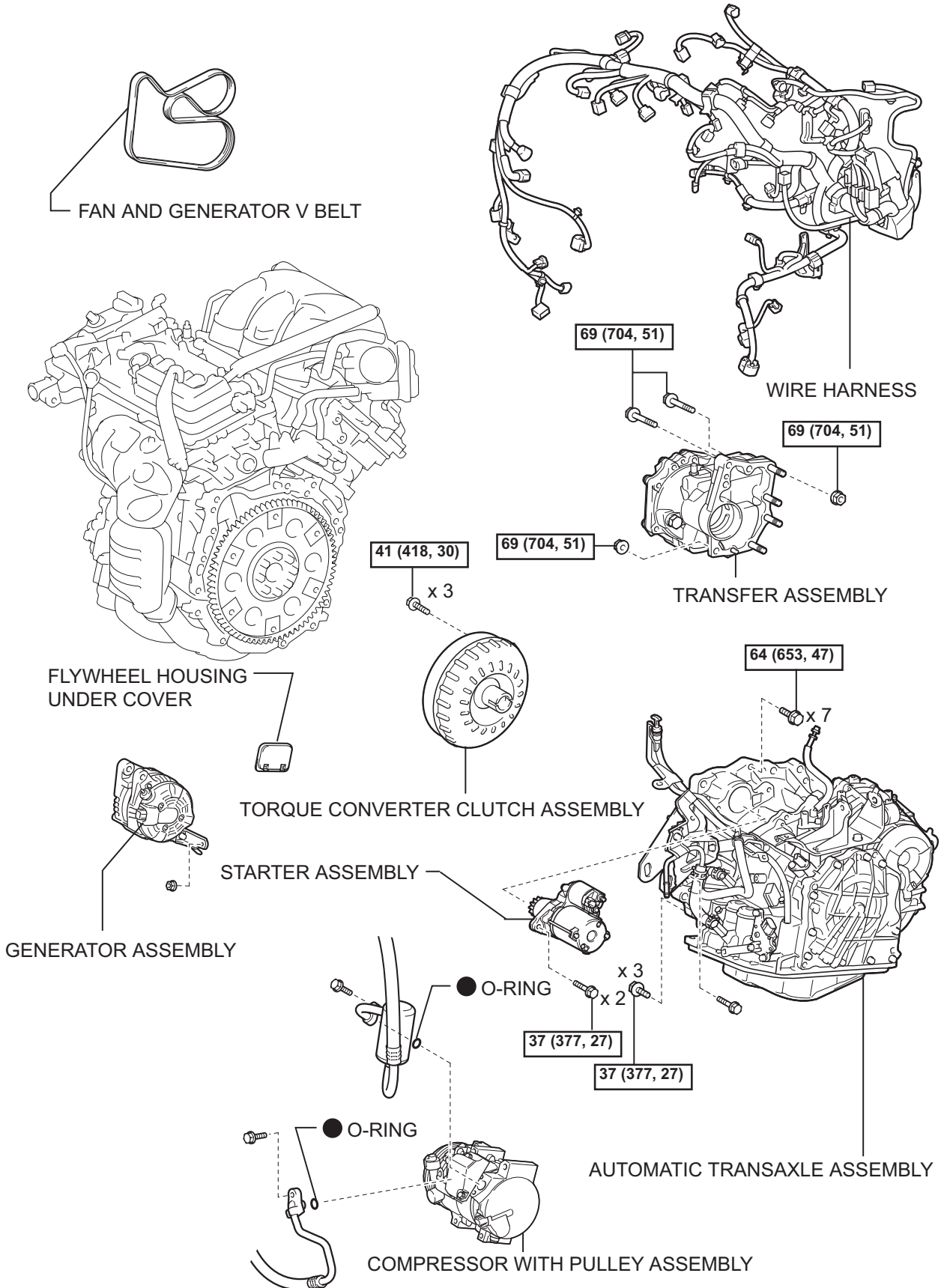


O-RING

[N*m (kgf*cm, ft.*lbf)]: Specified torque ● Non-reusable part

EM

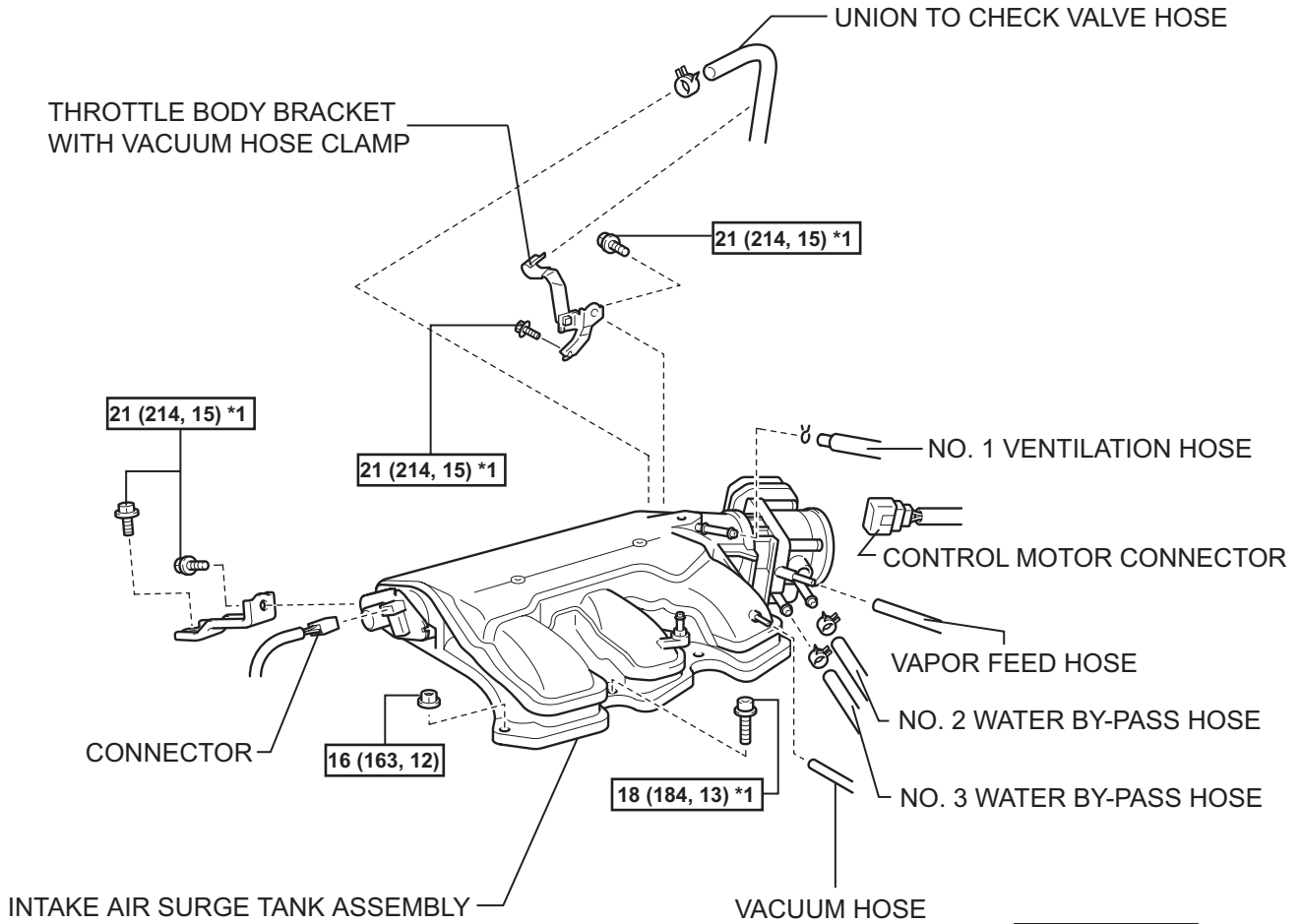
for 4WD



EM

N*m (kgf*cm, ft.*lbf) : Specified torque ● Non-reusable part

EM



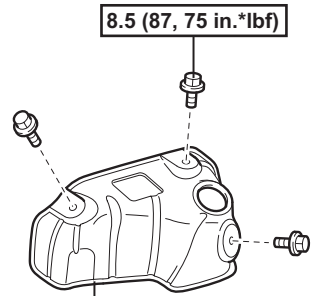
● AIR SURGE TANK TO INTAKE MANIFOLD GASKET



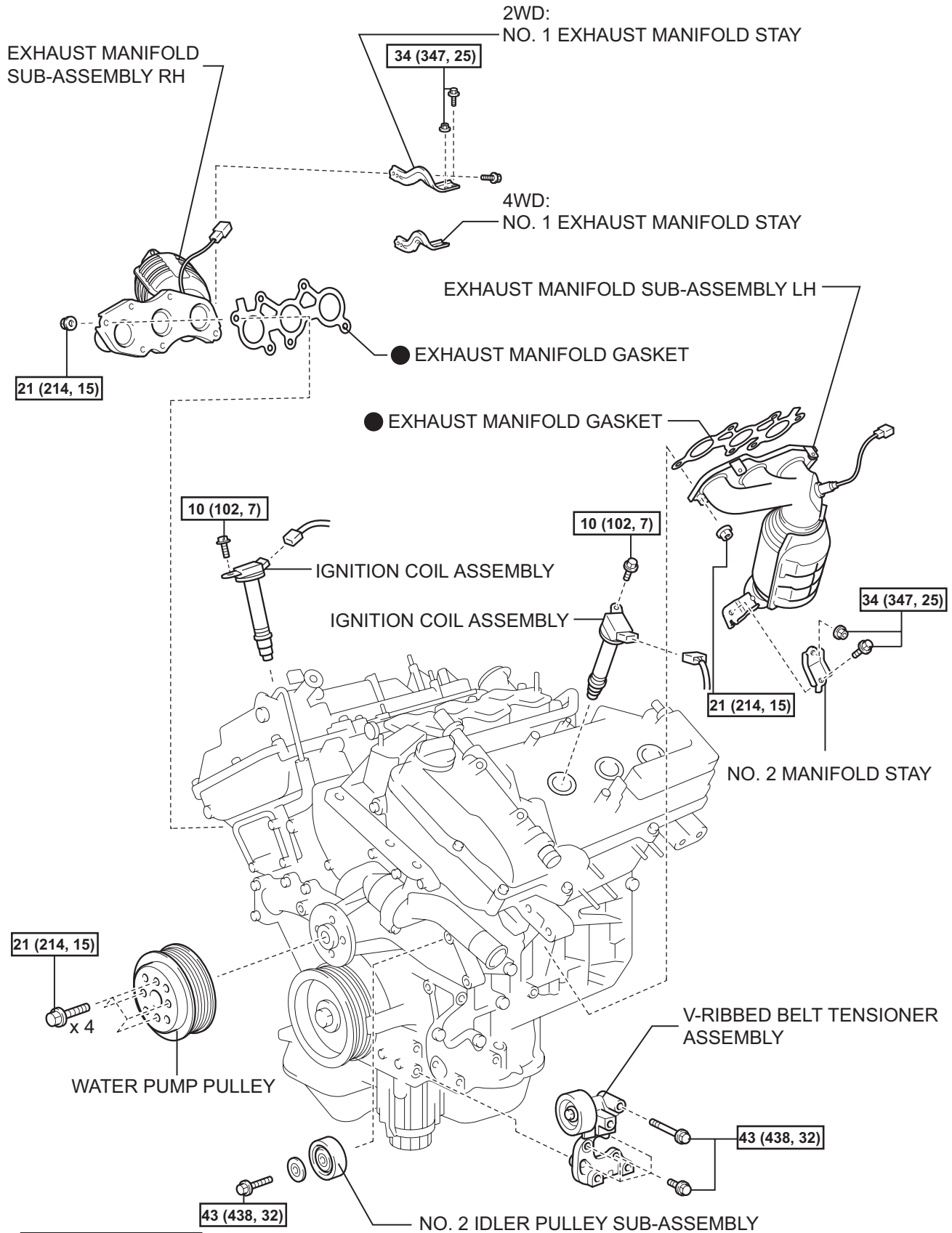
N*m (kgf*cm, ft.*lbf) : Specified torque

● Non-reusable part

*1: Do not allow oil to contact these bolts



NO. 2 EXHAUST MANIFOLD HEAT INSULATOR



N*m (kgf*cm, ft.*lbf) : Specified torque

● Non-reusable part

EM

EM

