

REMOVAL

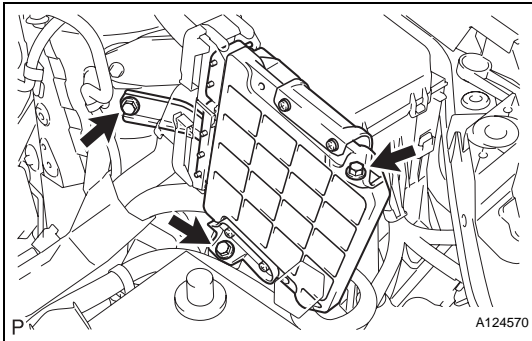
1. DISCONNECT CABLE FROM NEGATIVE BATTERY TERMINAL

CAUTION:

Wait at least 90 seconds after disconnecting the cable from the negative (-) battery terminal to prevent airbag and seat belt pretensioner activation.

2. REMOVE AIR CLEANER CAP (See page EM-23)
3. REMOVE AIR CLEANER CASE (See page EM-23)
4. REMOVE ECM

(a) Remove the 3 bolts of the ECM bracket.



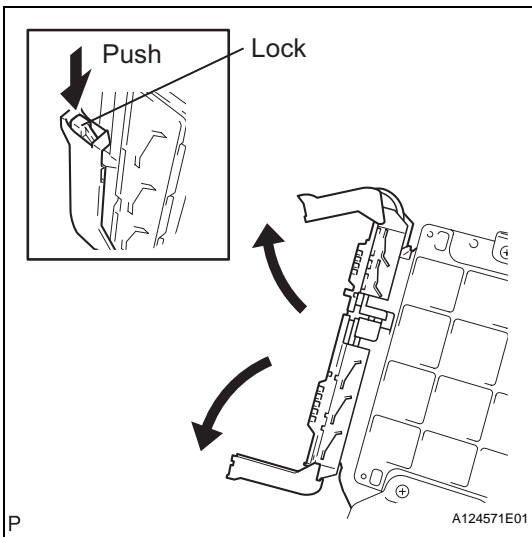
(b) Disconnect the 2 ECM connectors.

NOTICE:

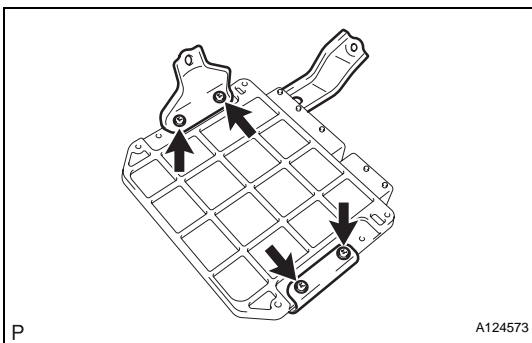
After disconnecting the connector, make sure that dirt, water and other foreign matter does not contact the connecting part of the connector.

(1) Raise the 2 levers while pushing the locks on the 2 levers, and disconnect the 2 ECM connectors.

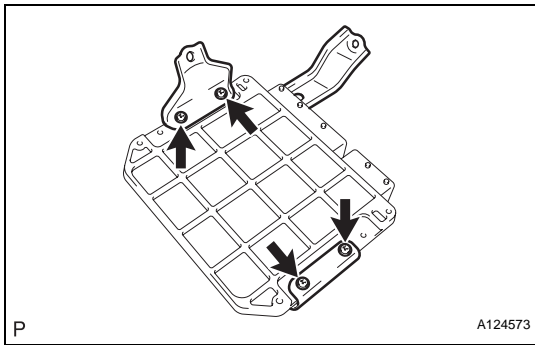
(c) Remove the ECM with bracket.



(d) Remove the 4 screws and 2 ECM brackets.

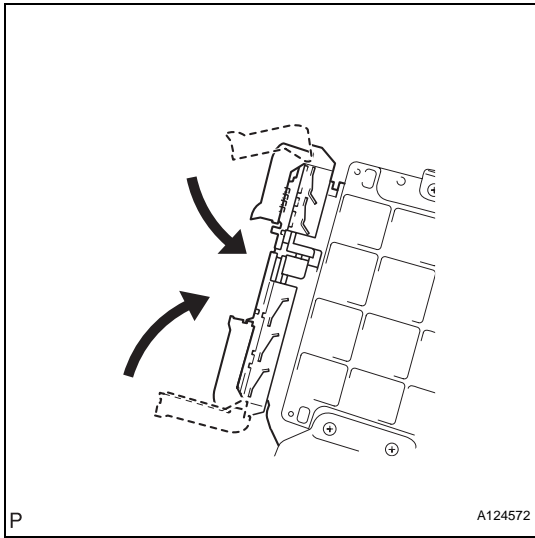


INSTALLATION



1. INSTALL ECM

- (a) Install the 2 brackets to the ECM with the 4 screws.
Torque: 3.0 N*m (30 kgf*cm, 27 in.*lbf)



- (b) Connect the 2 ECM connectors.

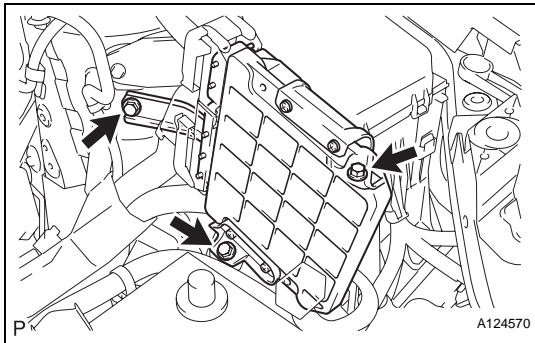
NOTICE:

When connecting the connector, make sure that dirt, water and other foreign matter does not become stuck between the connector and other part.

- (1) Connect the 2 ECM connectors and lower the 2 levers.

NOTICE:

Make sure that the 2 levers are securely lowered.



- (c) Install the ECM with the 3 bolts.

Torque: 6.5 N*m (66 kgf*cm, 57 in.*lbf)

2. INSTALL AIR CLEANER CASE (See page [EM-39](#))

3. INSTALL AIR CLEANER CAP (See page [EM-39](#))

4. CONNECT CABLE TO NEGATIVE BATTERY TERMINAL

5. PERFORM REGISTRATION

- (a) When replacing the ECM, the Vehicle Identification Number (VIN) must be input into the replacement the new ECM (see page [ES-14](#)).
- (b) When replacing the ECM, perform the vehicle stability control system recognition in the ECM (see page [CC-12](#)).

6. RESET MEMORY

- (a) 2WD:

When replacing the ECM, perform the RESET MEMORY procedure (A/T initialization) (see page [AX-20](#)).

- (b) 4WD:

When replacing the ECM, perform the RESET MEMORY procedure (A/T initialization) (see page [AX-20](#)).