

## REMOVAL

1. DISCONNECT CABLE FROM NEGATIVE BATTERY TERMINAL

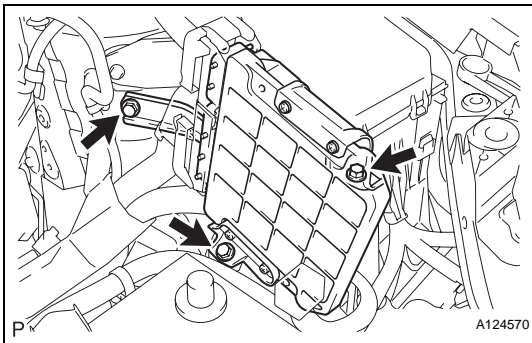
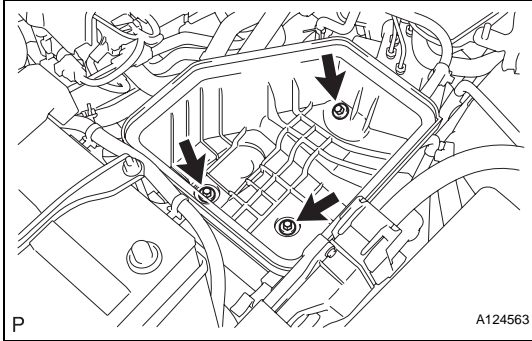
### CAUTION:

Wait at least 90 seconds after disconnecting the cable from the negative (-) battery terminal to prevent airbag and seat belt pretensioner activation.

2. REMOVE AIR CLEANER CAP (See page [ES-411](#))

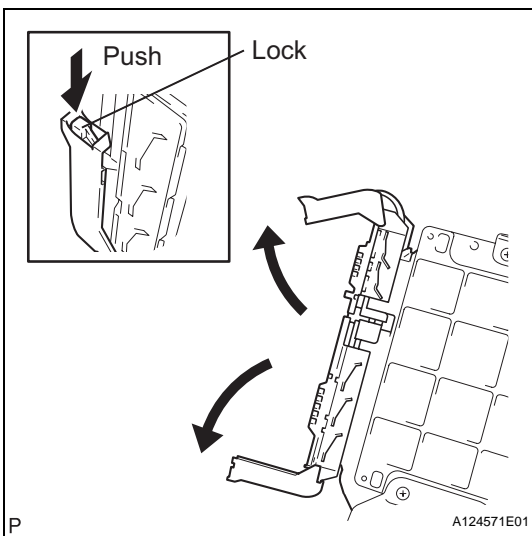
3. REMOVE AIR CLEANER CASE

- (a) Disconnect the harness clamp.
- (b) Remove the 3 bolts and air cleaner case.



4. REMOVE ECM

- (a) Remove the 3 bolts of the ECM with bracket.



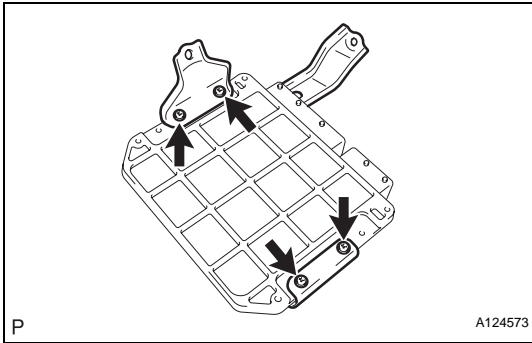
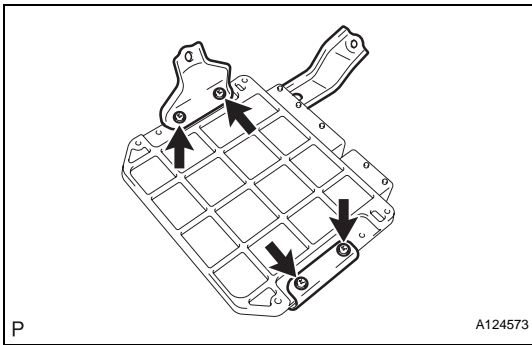
- (b) Disconnect the 2 ECM connectors.

### NOTICE:

After disconnecting the connector, make sure that dirt, water and other foreign matter does not contact the connecting part of the connector.

- (1) Raise the 2 levers while pushing the locks on the 2 levers, and disconnect the 2 ECM connectors.
- (c) Remove the ECM with bracket.

(d) Remove the 4 screws and 2 ECM brackets.



## INSTALLATION

### 1. INSTALL ECM

(a) Install the 2 brackets to the ECM with the 4 screws.  
**Torque: 3.0 N\*m (30 kgf\*cm, 27 in.\*lbf)**

(b) Connect the 2 ECM connectors.

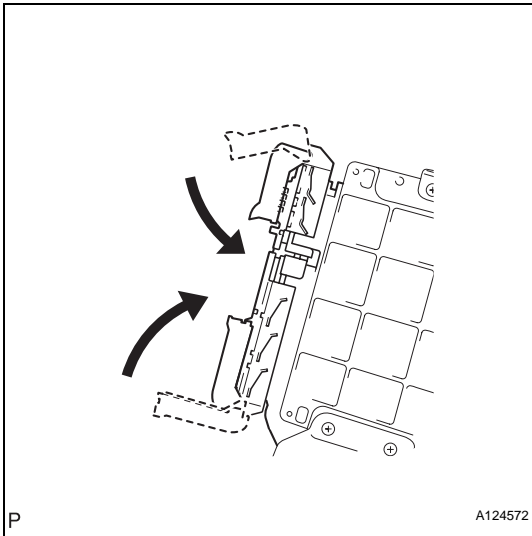
**NOTICE:**

**When connecting the connector, make sure that dirt, water and other foreign matter does not become stuck between the connector and other part.**

(1) Connect the 2 ECM connectors and lower the 2 levers.

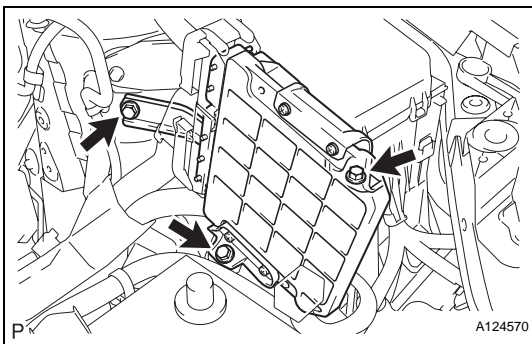
**NOTICE:**

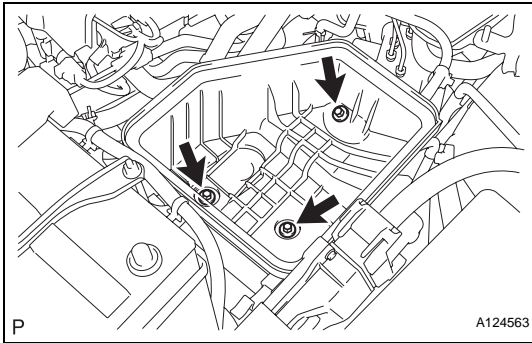
**Make sure that the 2 levers are securely lowered.**



(c) Install the ECM with the 3 bolts.

**Torque: 6.5 N\*m (66 kgf\*cm, 57 in.\*lbf)**





2. **INSTALL AIR CLEANER CASE**
  - (a) Install the air cleaner case with the 3 bolts.  
**Torque: 5.0 N\*m (51 kgf\*cm, 44 in.\*lbf)**
  - (b) Connect the harness clamp.
3. **INSTALL AIR CLEANER CAP (See page [ES-413](#))**
4. **CONNECT CABLE TO NEGATIVE BATTERY TERMINAL**
5. **PERFORM REGISTRATION**
  - (a) When replacing the ECM, the Vehicle Identification Number (VIN) must be input into the replacement ECM (see page [ES-13](#)).
  - (b) When replacing the ECM, perform the vehicle stability control system recognition in the ECM (see page [CC-12](#)).
6. **RESET MEMORY**
  - (a) When replacing the ECM, perform the RESET MEMORY procedure (A/T initialization) (see page [AX-18](#)).