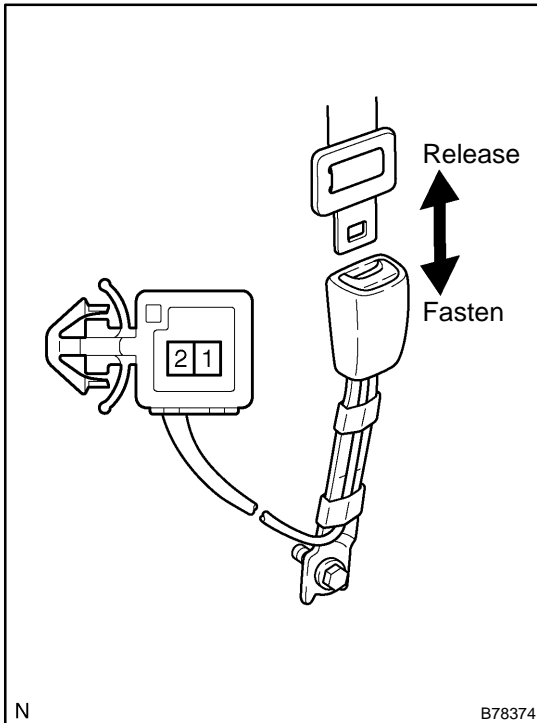


INSPECTION



1. Driver side:

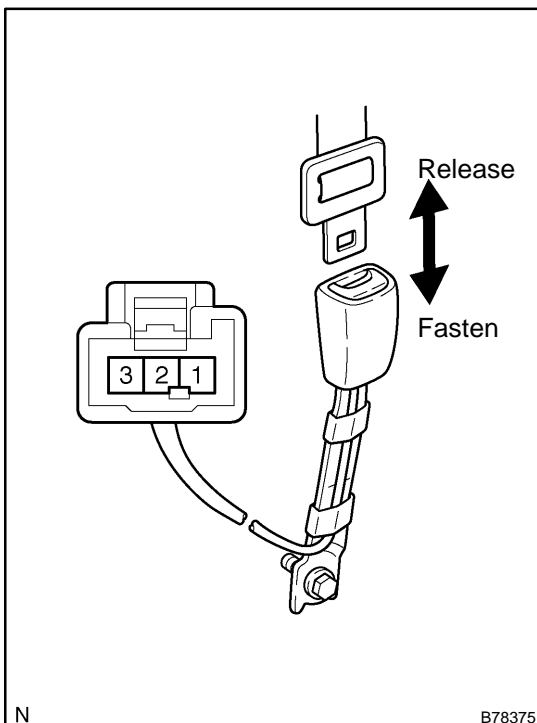
INSPECT FRONT SEAT INNER BELT ASSY

- (a) Measure the resistance between the terminals of the buckle switch.

Standard:

Tester Condition	Condition	Specified Condition
1 – 2	Fasten seat belt	1 M Ω or higher
1 – 2	Release seat belt	Below 1 Ω

If the result is not as specified, replace the inner belt assy.



2. Passenger side:

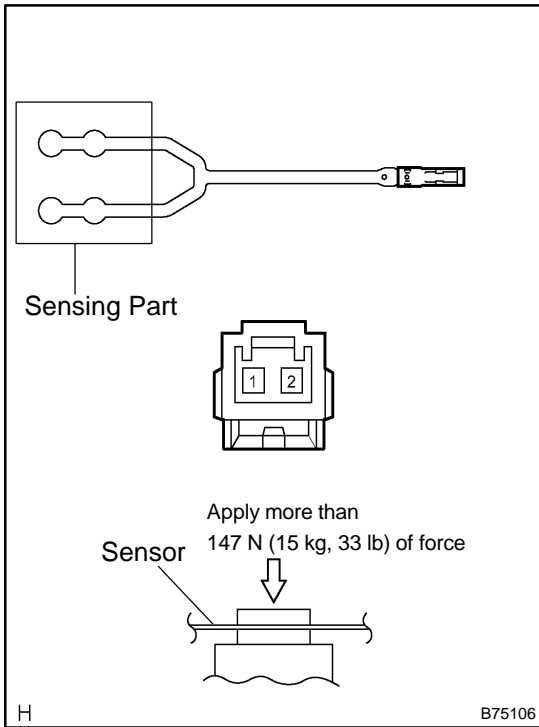
INSPECT FRONT SEAT INNER BELT ASSY

- (a) Measure the resistance between the terminals of the buckle switch.

Standard:

Tester Condition	Condition	Specified Condition
1 – 2	Fasten seat belt	1 M Ω or higher
1 – 2	Release seat belt	Below 1 Ω

If the result is not as specified, replace the inner belt assy.



3. INSPECT OCCUPANT DETECTION SENSOR

(a) Measure the resistance between the terminals.

Standard:

Tester Condition	Condition	Specified Condition
1 - 2	Apply more than 147 N (15 kg, 33 lb) to occupant detection sensor	Below 1 Ω
1 - 2	Free	1 MΩ or higher

If the result is not as specified, replace the seat cushion pad.