

HYBRID TRANSAXLE SYSTEM

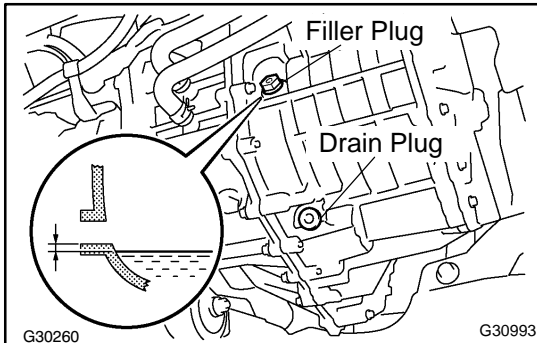
ON-VEHICLE INSPECTION

2200U-01

1. CHECK TRANSAXLE FLUID LEVEL

NOTICE:

- Insufficient or excessive amounts of transaxle oil may be the cause of some trouble.
- Stop the vehicle on a flat road.
- Use genuine ATF WS.



- Remove the filler plug.
- Ensure that there is transaxle oil within 0 to 5 mm of the filler plug hole.

NOTICE:

Recheck the transaxle oil level after driving when exchanging oil.

HINT:

Transaxle fluid quantity: 3.8 L (4.0 USqts, 3.3 Imp. qts.)

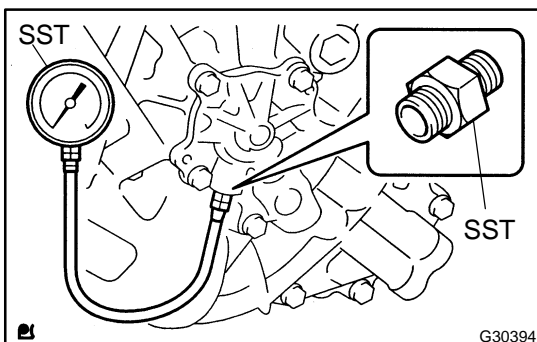
- Check for leaks if the quantity of oil is low.
 - Install the filler plug using a new gasket.
- Torque: 39 N·m (400 kgf·cm, 29 ft·lbf)**

2. INSPECT OIL PRESSURE IN OIL PUMP

NOTICE:

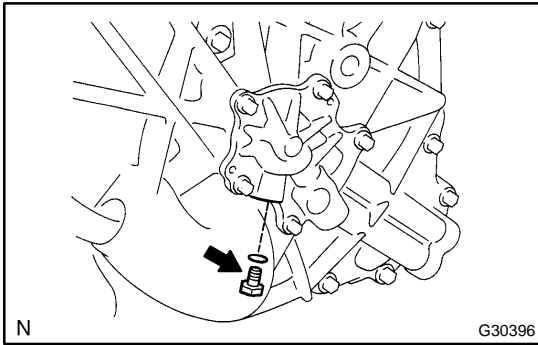
Do the test at normal operating oil temperature 50 to 80 °C (122 to 176 °F).

- Lift up the vehicle.

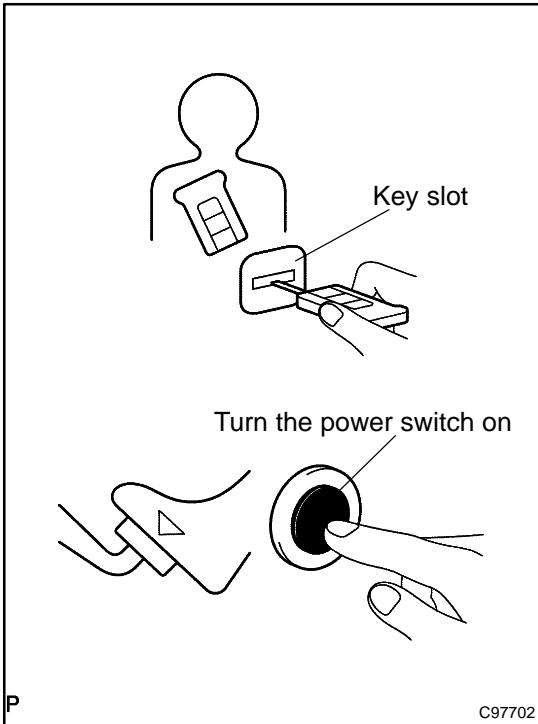


- Remove the fluid pump cover plug and install SST. SST 09992-00095 (09992-00112, 09992-00271)
- Set the blower switch to HI.
- Turn the A/C switch on.
- Push the power switch with the brake pedal depressed to start the engine (start the hybrid system).
- Keeping the engine speed of 1,200 rpm, measure the oil pressure.

Oil pressure: 9.8 kPa (0.1 kgf/cm², 1.4 psi) or more



- (g) Install a new O-ring and fluid pump cover plug.
Torque: 7.4 N·m (75 kgf·cm, 65 in.-lbf)



3. INSPECT SHIFT LEVER

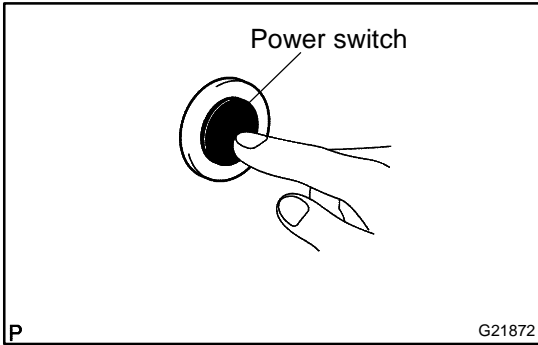
- (a) Inspect with the hybrid system started up
- (1) Insert the key into the key slot.
 - (2) Carry the key with you or insert the key in the key slot (vehicles equipped with smart entry and start system)
 - (3) Turn the power switch on (READY ON) while depressing the brake pedal.

Check if gears change according to the shift operation pattern. If the check result is abnormal, replace the shift lever assy.

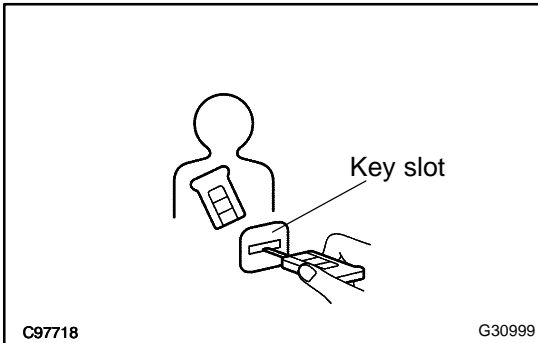
HINT:

The shift operation pattern in READY ON (when the vehicle is stopped) is shown below.

Power condition	Operation	P	R	N	D	B
Hybrid system start-up (driving possible)	Shift lever operation	○ → ○				
		○ → ○				
		○ → ○				
		○ → ○				
		○ → ○				
		○ → ○				
		○ → ○				
		○ → ○				
		○ → ○				
		○ → ○				
		○ → ○				
		○ → ○				
		○ → ○				
		P position switch operation	P position switch operation	○ ← ○		
○ ← ○						
○ ← ○						
○ ← ○						



(b) Turn the power switch off when stopping.

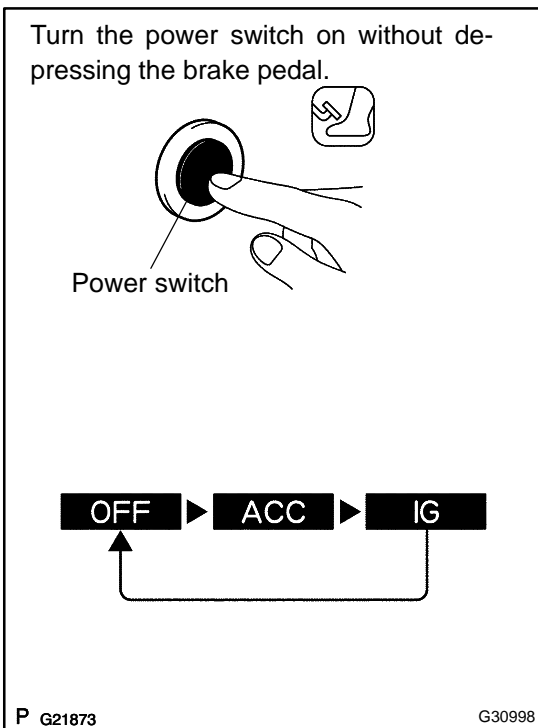


(c) Inspect with the power condition IG

HINT:

All electrical components operate but the hybrid system does not start-up.

- (1) Insert the key into the key slot.
- (2) Carry the key with you or insert the key in the key slot (vehicles equipped with smart entry and start system)



(d) Turn the power switch on once without depressing the brake pedal.

HINT:

This condition switches between OFF, ACC and IG each time the power switch is pressed.

Check if gears change according to the shift operation pattern. If the check result is abnormal, replace the shift lever assy.

HINT:

The shift operation pattern in power condition IG is shown below.

Power condition	Operation	P	R	N	D	B
IG (Driving not possible)	Shift lever operation	○	————→	○		
	P position switch operation	○	←————	○		

Z35574