

DTC	C1552	PIG POWER SUPPLY VOLTAGE ABNORMAL
------------	--------------	--

DTC	C1554	POWER SUPPLY RELAY FAILURE
------------	--------------	-----------------------------------

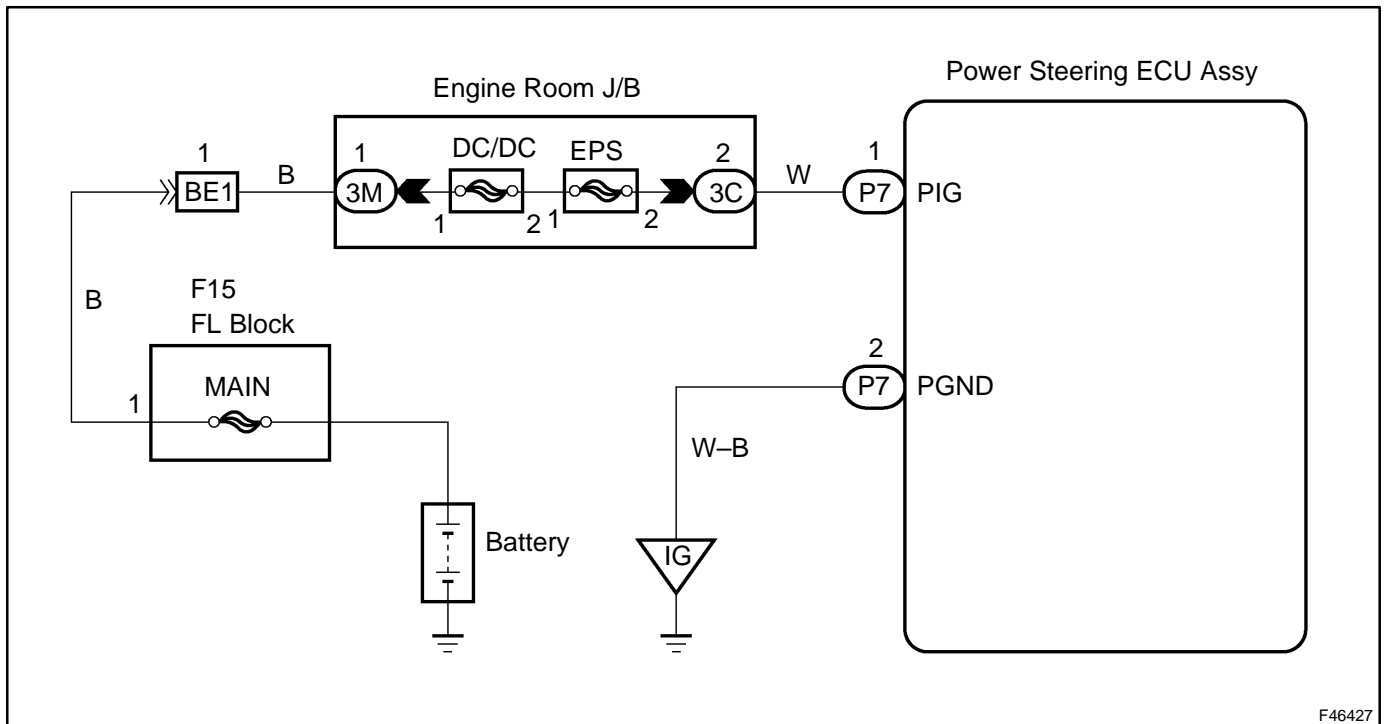
DTC	C1555	MOTOR RELAY WELDING FAILURE
------------	--------------	------------------------------------

CIRCUIT DESCRIPTION

When a problem occurs in the system, the power source relay (built into the power steering ECU Assy) circuit and the motor relay (built into the power steering ECU Assy) circuit are shut off to stop power assist. It is necessary to replace the ECU when there is a problem in the relay because each relay is built into the ECU.

DTC No.	DTC Detection Item	Trouble Area
C1552	PIG power source voltage error	<ul style="list-style-type: none"> • EPS Fuse • Power source relay (built into the power steering ECU Assy) • Motor relay (built into the power steering ECU Assy) • PIG power source circuit • Power steering ECU Assy
C1554	Power source relay malfunction	<ul style="list-style-type: none"> • EPS Fuse • Power source relay (built into the power steering ECU Assy) • PIG power source circuit • Power steering ECU Assy
C1555	Motor relay malfunction	<ul style="list-style-type: none"> • EPS Fuse • Motor relay (built into the power steering ECU Assy) • PIG power source circuit • Power steering ECU Assy

WIRING DIAGRAM



F46427

INSPECTION PROCEDURE

1 INSPECT FUSE(EPS FUSE)

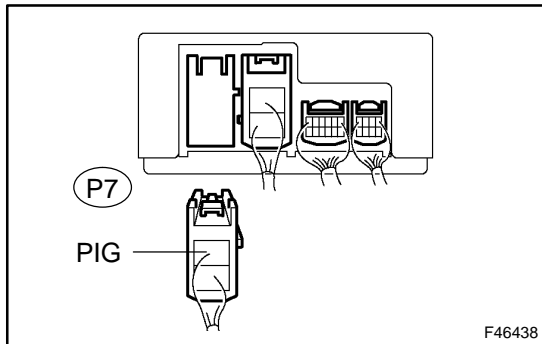
- (a) Remove the EPS fuse from the engine room J/B.
- (b) Check continuity of the EPS fuse.

Standard: Continuity

NG INSPECT FOR SHORT IN ALL COMPONENTS CONNECTED TO FUSE AND REPAIR OR REPLACE THEM IF NEEDED, AND REPLACE FUSE

OK

2 CHECK HARNESS AND CONNECTOR(POWER STEERING ECU ASSY – BODY GROUND)



- (a) Disconnect the "P7" connector from the power steering ECU assy.
- (b) Measure the voltage according to the value(s) in the table below.

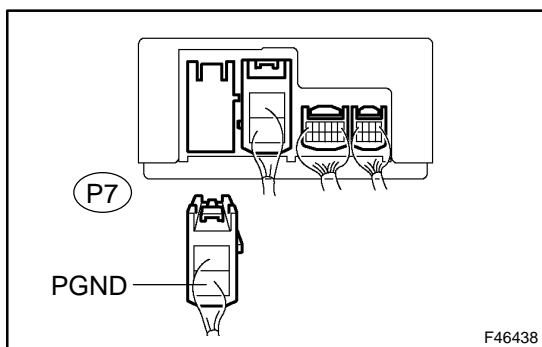
Standard:

Tester Connection	Condition	Specified Condition
P7-1 (PIG) – Body ground	Always	10 to 16 V

NG REPAIR OR REPLACE HARNESS OR CONNECTOR

OK

3 CHECK HARNESS AND CONNECTOR(POWER STEERING ECU ASSY – BODY GROUND)



- (a) Measure the resistance according to the value(s) in the table below.

Standard:

Tester Connection	Condition	Specified Condition
P7-2 (PGND) – Body ground	Always	Below 1 Ω

NG REPAIR OR REPLACE HARNESS OR CONNECTOR

OK

REPLACE POWER STEERING ECU ASSY (SEE PAGE 50-16)