

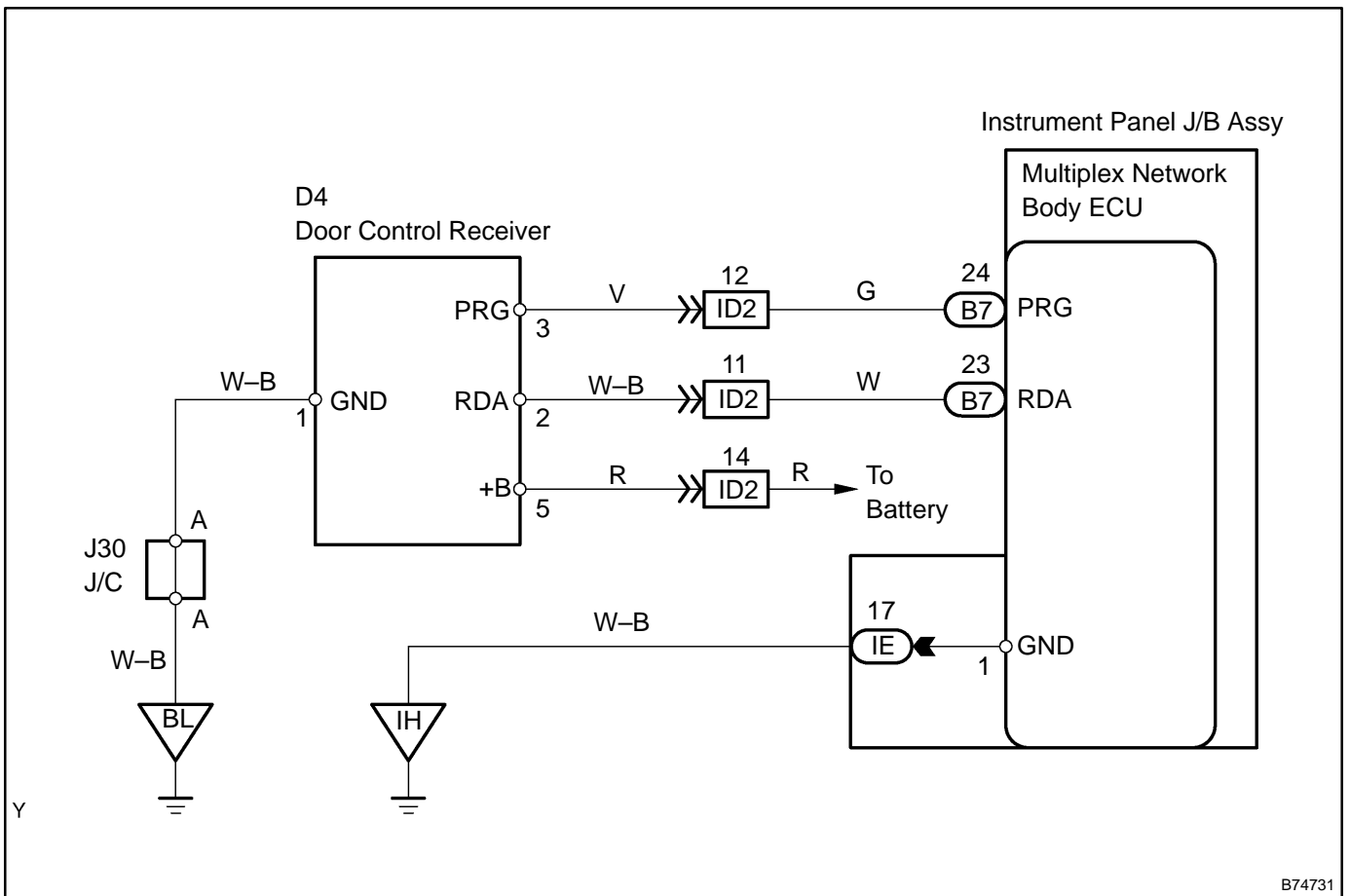
DTC	B1242	WIRELESS DOOR LOCK TUNER CIRCUIT MALFUNCTION
------------	--------------	-----------------------------------------------------

CIRCUIT DESCRIPTION

This DTC is detected when a RDA signal is not input to the door control receiver within 1 second after the multiplex network body ECU outputs a PRG signal.

DTC No.	DTC Detection Condition	Trouble Area
B1242	Within 1 second after PRG signal is output from multiplex network body ECU during self-diagnostic mode, corresponding RDA signal is not input.	<ul style="list-style-type: none"> • Door control receiver • Wire harness • Multiplex network body ECU

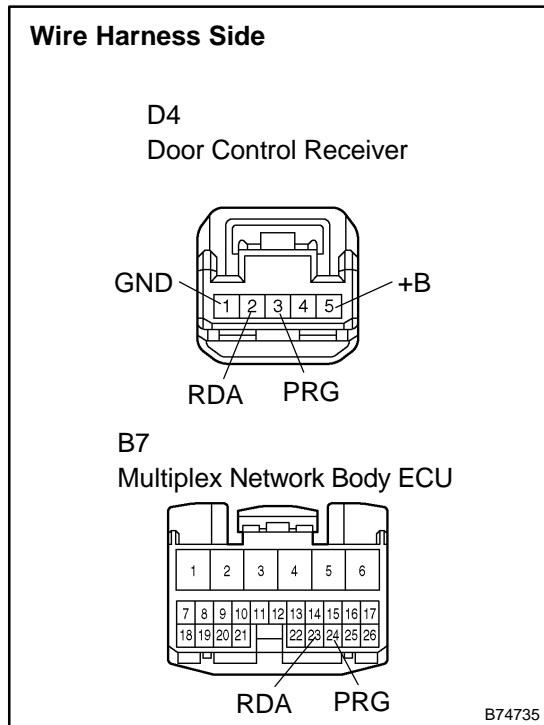
WIRING DIAGRAM



B74731

INSPECTION PROCEDURE

1 CHECK WIRE HARNESS (DOOR CONTROL RECEIVER – MULTIPLEX NETWORK BODY ECU) (DOOR CONTROL RECEIVER OR MULTIPLEX NETWORK BODY ECU – BODY GROUND)



- (a) Disconnect the B7 ECU connector.
- (b) Disconnect the D4 receiver connector.
- (c) Measure the voltage and resistance of the wire harness side connectors.

Standard:

Tester Connection	Specified Condition
D4-2 (RDA) – B7-23 (RDA)	Below 1 Ω
D4-3 (PRG) – B7-24 (PRG)	Below 1 Ω
D4-5 (+B) – Body ground	10 to 14 V
D4-1 (GND) – Body ground	Below 1 Ω
D4-2 (RDA) or B7-23 (RDA) – Body ground	10 kΩ or higher
D4-3 (PRG) or B7-24 (PRG) – Body ground	10 kΩ or higher

NG REPAIR OR REPLACE WIRE HARNESS AND CONNECTOR

OK

2 REPLACE DOOR CONTROL RECEIVER

- (a) Check that no DTC is output.
OK: No DTC is output.

NG REPLACE INSTRUMENT PANEL JUNCTION BLOCK ASSY

OK

END