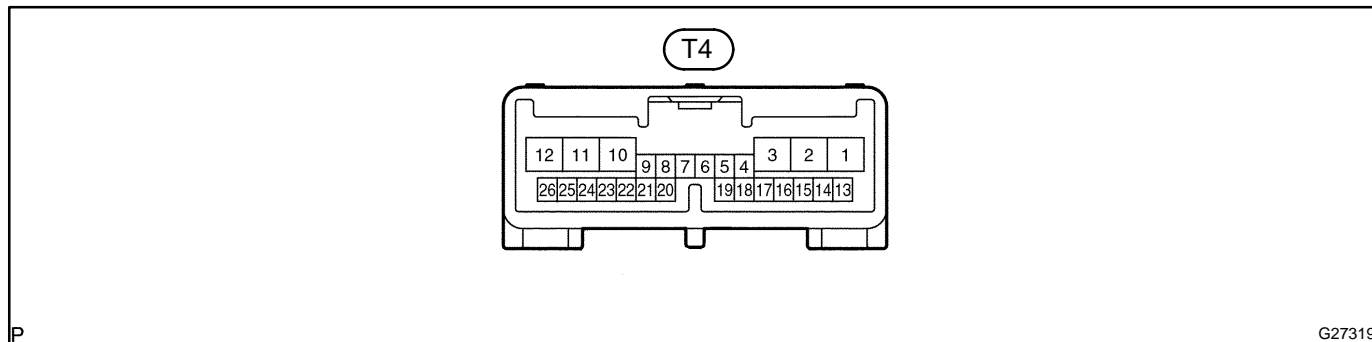


TERMINALS OF ECU

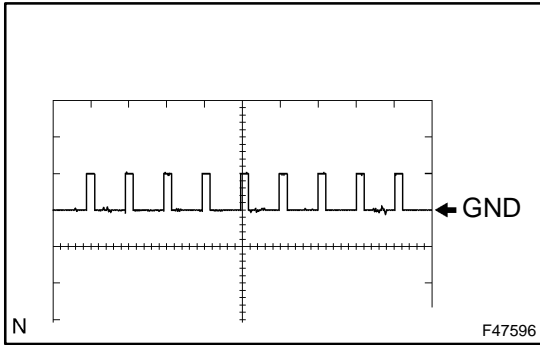
1. TRANSMISSION CONTROL ECU ASSY

HINT:

Inspect the connectors from the back side while the connector is connected.

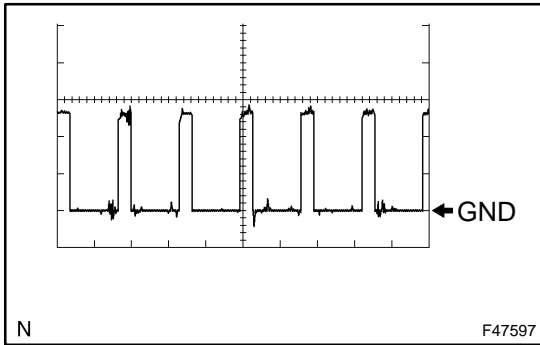


Terminal No. (Symbols)	Wiring color	Terminal description	Condition	Specified value
T4-1 – T4-15 (+B – E1)	L – W-B	Power source	Power switch on (IG)	9 to 14 V
T4-2 (E02) – Body ground	W-B – Body ground	Ground	Always	Below 1 V
T4-3 (E01) – Body ground	W-B – Body ground	Ground	Always	Below 1 V
T4-4 – T4-16 (RZ1 – E2)	L – P	Rotation angle sensor signal	Power switch on (IG)	4 to 5.5 V
T4-5 – T4-16 (RB – E2)	GR – P	Rotation angle sensor signal	Power switch on (IG)	4 to 5.5 V
T4-6 – T4-16 (RA – E2)	LG – P	Rotation angle sensor signal	Power switch on (IG)	4 to 5.5 V
T4-7 – T4-15 (PCON – E1)	LG – W-B	Communication Bus	Power switch on (IG)	Pulse generation (see wave form 1)
T4-8 – T4-15 (PPOS – E1)	W – W-B	Communication Bus	Power switch on (IG)	Pulse generation (see wave form 2)
T4-9 – T4-15 (IND – E1)	R – W-B	P position switch indicator light	P position switch on	Below 1 V
T4-10 – T4-15 (MWA – E1)	W – W-B	Parking lock motor	Power switch on (IG)	9 to 14 V
T4-11 – T4-15 (MVA – E1)	R – W-B	Parking lock motor	Power switch on (IG)	9 to 14 V
T4-12 – T4-15 (MUA – E1)	B – W-B	Parking lock motor	Power switch on (IG)	9 to 14 V
T4-13 – T4-15 (BATT – E1)	L – W-B	Power source (RAM)	Always	9 to 14 V
T4-14 – T4-15 (BMA – E1)	B – W-B	P CON relay	Power switch on (IG)	9 to 14 V
T4-15 (E1) – Body ground	W-B – Body ground	Ground	Always	Below 1 V
T4-16 (E2) – Body ground	P – Body ground	Ground	Always	Below 1 V
T4-17 – T4-16 (VC – E2)	O – P	Power source (Rotation angle sensor)	Power switch on (IG)	4.5 to 5.5 V
T4-18 – T4-15 (MPX2 – E1)	B – W-B	Multiplex communication	Power switch off Power switch on (IG)	Below 1 V Pulse generation
T4-19 – T4-15 (MPX1 – E1)	GR – W-B	Multiplex communication	Power switch off Power switch on (IG)	Below 1 V Pulse generation
T4-20 – T4-15 (SIL – E1)	W – W-B	Diagnosis tester communication	Power switch on (IG)	8 V or higher



(a) Wave form 1

Item	Content
Measure terminal	PCON – E1
Measure set	5V/DIV, 20 ms/DIV
Condition	Power switch on (IG)



(b) Wave form 2

Item	Content
Measure terminal	PPOS – E1
Measure set	5V/DIV, 20 ms/DIV
Condition	Power switch on (IG)