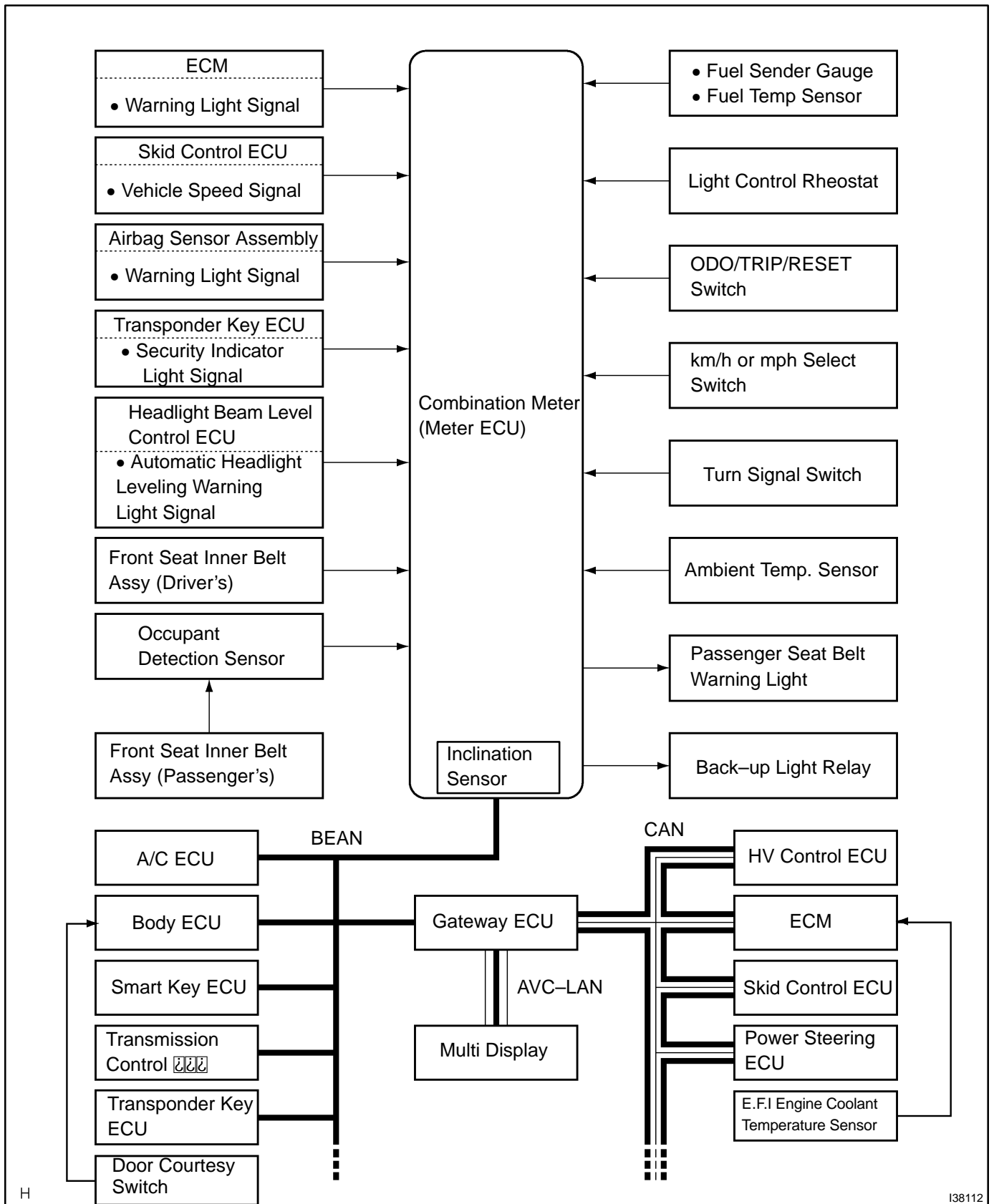


SYSTEM DIAGRAM



H

I38112

GATEWAY:

ECU	Signals from/to Combination meter (Meter ECU)
GATEWAY ECU	<ul style="list-style-type: none"> • Receives ODO METER information signal

BEAN:

ECU	Signals from/to Combination Meter (Meter ECU)
A/C ECU	<ul style="list-style-type: none"> • Transmits ambient temperature signal (for low ambient temperature warning light) • Transmits indicator light (A/C AUTO, RECIRCULATE, Front DEF, Rear DEF) ON demand signal • Receives vehicle speed signal
Body ECU	<ul style="list-style-type: none"> • Receives vehicle speed signal • Receives tail cancel signal • Transmits D seat door courtesy SW signal (for headlamp reminder control) • ACC switch signal • Transmits D seat door courtesy SW signal • Transmits warning ON signal (HEAD and TAIL) • Transmits headlight ON signal (HI-BEAM) • Transmits front fog light ON signal (FOG indicator light) • Transmits meter illumination light dimmer demand signal • Transmits warning ON signal (all door courtesy switch)
Smart Key ECU	<ul style="list-style-type: none"> • Receives vehicle speed signal • Transmits inside cabin key detection signal (Smart Key System) • Transmits buzzer sounding demand signal
Transmission Control ECU	<ul style="list-style-type: none"> • Transmits P state signal • Transmits master warning light (P control malfunction) ON demand signal • Transmits shift position (N, P) signal
Transponder Key ECU	<ul style="list-style-type: none"> • Transmits master warning light (shift warning) ON demand signal • Transmits buzzer sounding demand signal • Receives vehicle speed signal
Steering Lock ECU	<ul style="list-style-type: none"> • Transmits buzzer sounding demand signal • Transmits meter display signal

CAN:

ECU	Signals from/to Combination Meter (Meter ECU)
HV ECU	<ul style="list-style-type: none"> • Transmits shift position signal (P, R, N, D, B) (for shift position indicator light) • Transmits cruise indicator light ON demand signal • Transmits master warning light (HV system, main battery, NDB warning, Motor inverter, CHARGE) ON demand signal • Transmits READY indicator ON/blink & buzzer sounding signal • Transmits starter ON signal • Transmits EV indicator ON/blink & buzzer sounding signal
ECM	<ul style="list-style-type: none"> • Receives fuel tank level signal • Transmits engine coolant temperature signal (for master warning light [engine coolant temperature warning]) • Transmits engine speed signal (for trip information operation) • Transmits fuel injection volume signal (for trip information operation) • Transmits test mode signal • Transmits master warning light (OIL. P) ON signal
Skid Control ECU	<ul style="list-style-type: none"> • Transmits warning signal (ABS, VSC, BRAKE, ECB) ON/blink demand signal • Transmits diagnosis signal (ABS, VSC, ECB) ON/blink demand signal • Transmits SLIP indicator light ON/blink demand signal
Power Steering ECU	<ul style="list-style-type: none"> • Transmits EPS warning light ON/blink demand signal

AVC-LAN:

ECU	Signals from/to Combination Meter (Meter ECU)
Multi-display	<ul style="list-style-type: none"> • Transmits trip information operation signal • Receives warning (fuel level, headlight leveling, EPS) display signal • Receives trip information display signal • Receives km/h (mph) selector switch signal • Receives taillight cancel switch signal