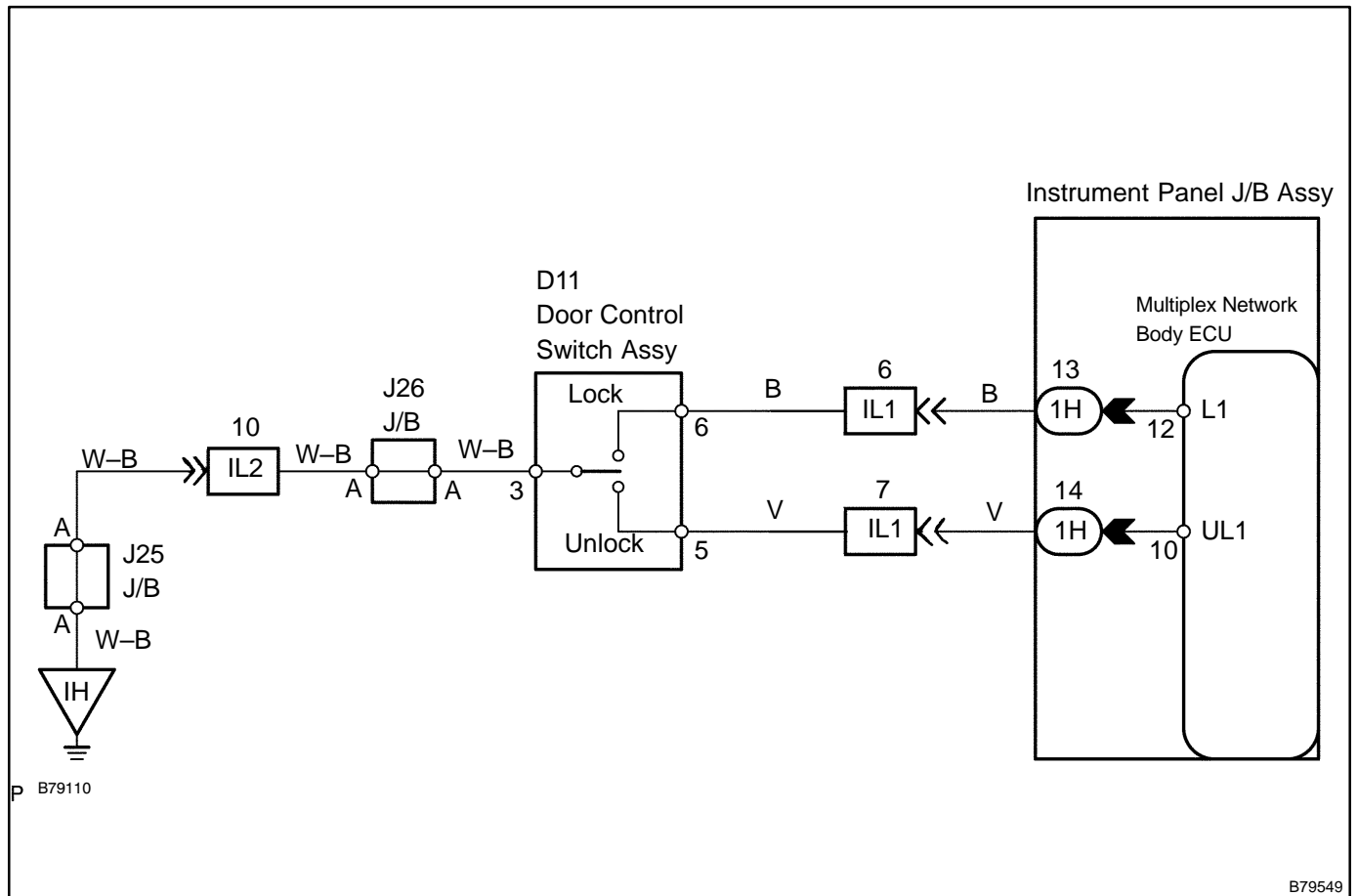


ALL DOORS LOCK/UNLOCK FUNCTIONS DO NOT OPERATE VIA DOOR CONTROL SWITCH

CIRCUIT DESCRIPTION

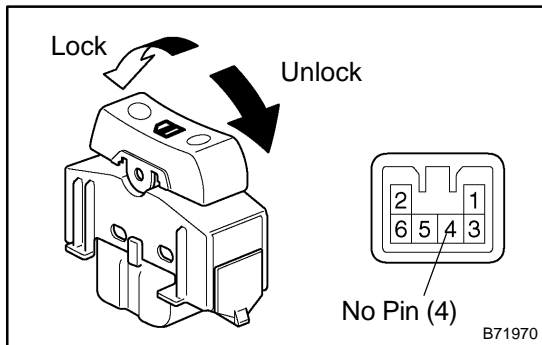
The instrument panel J/B Assy (multiplex network body ECU) receives switch signals from the door control switch and activates the door lock motors on each door according to the signals.

WIRING DIAGRAM



INSPECTION PROCEDURE

1 INSPECT DOOR CONTROL SWITCH ASSY



(a) Measure the resistance of the switch.

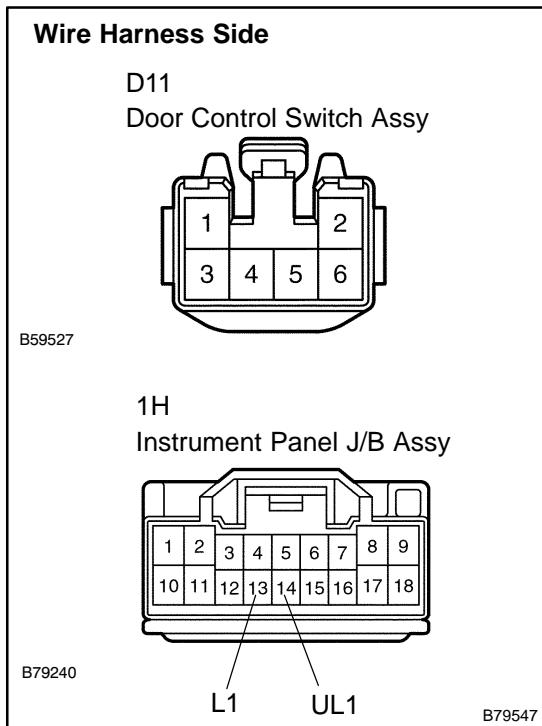
Standard:

Tester Connection	Switch Condition	Specified Condition
3-6	Lock	Below 1 Ω
3-5	OFF	10 kΩ or higher
3-6		
3-5	Unlock	Below 1 Ω

NG → REPLACE DOOR CONTROL SWITCH ASSY

OK

2 CHECK WIRE HARNESS (DOOR CONTROL SWITCH ASSY - INSTRUMENT PANEL J/B ASSY AND BODY GROUND)



(a) Disconnect the D11 switch and 1H J/B connectors.

(b) Measure the resistance of the wire harness side connectors.

Standard:

Tester Connection	Specified Condition
D11-6 - 1H-13 (L1)	Below 1 Ω
D11-5 - 1H-14 (UL1)	Below 1 Ω
D11-3 - Body ground	Below 1 Ω

NG → REPAIR OR REPLACE HARNESS AND CONNECTOR

OK

REPLACE INSTRUMENT PANEL JUNCTION BLOCK ASSY (MULTIPLEX NETWORK BODY ECU)