

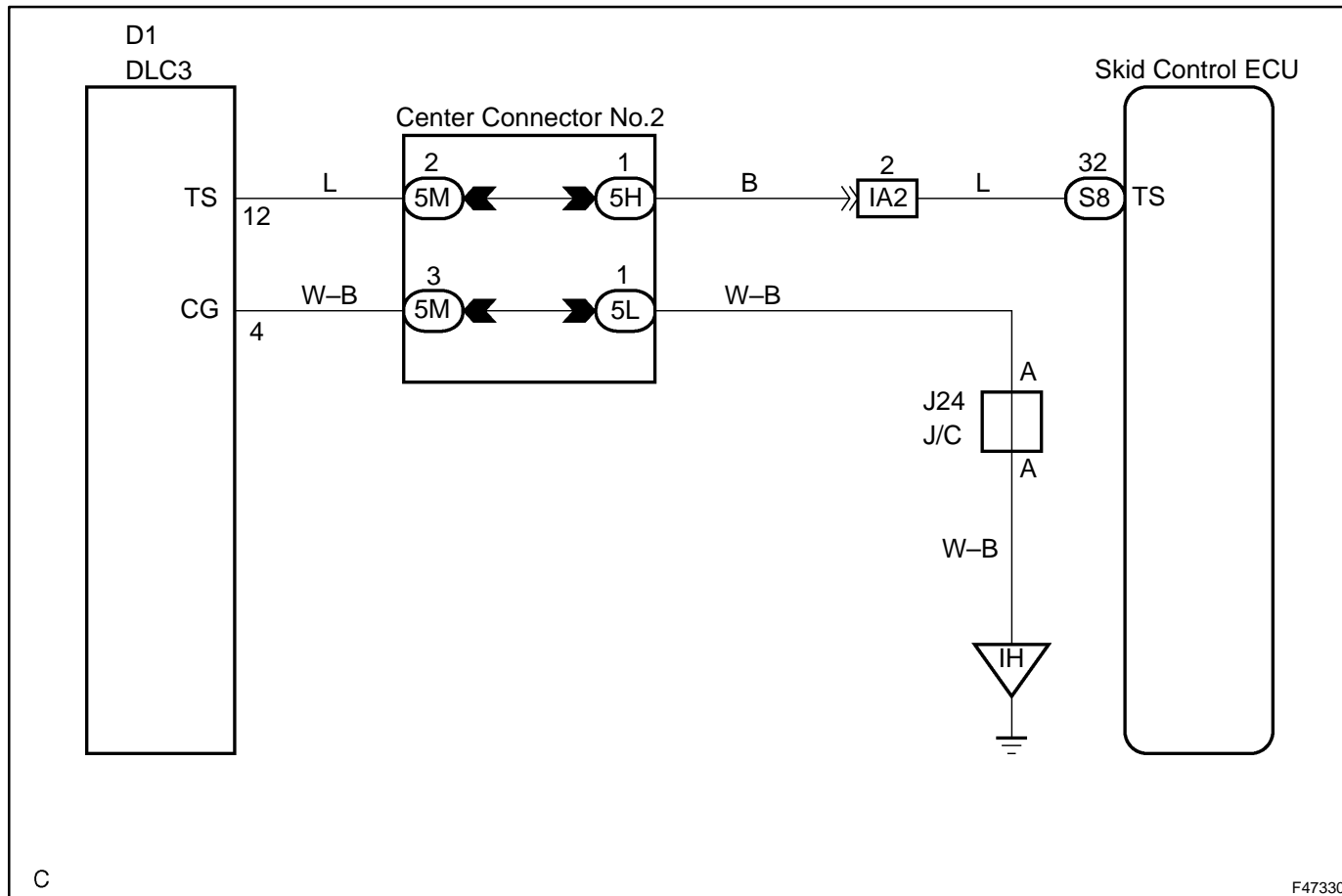
TS AND CG TERMINAL CIRCUIT

CIRCUIT DESCRIPTION

In the sensor check mode, a malfunction of the speed sensor that cannot be detected when the vehicle is stopped is detected while driving.

Transition to the sensor check mode can be performed by connecting terminals TS and CG of the DLC3 and turning the ignition switch from off to the ON position.

WIRING DIAGRAM

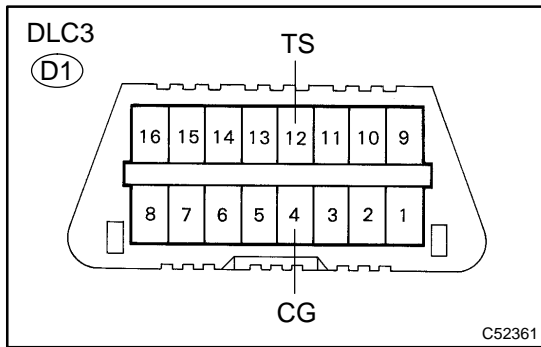


C

F47330

INSPECTION PROCEDURE

1 INSPECT DLC3 TERMINAL VOLTAGE(TS TERMINAL)



- (a) Turn the ignition switch to the ON position.
- (b) Measure the voltage according to the value(s) in the table below.

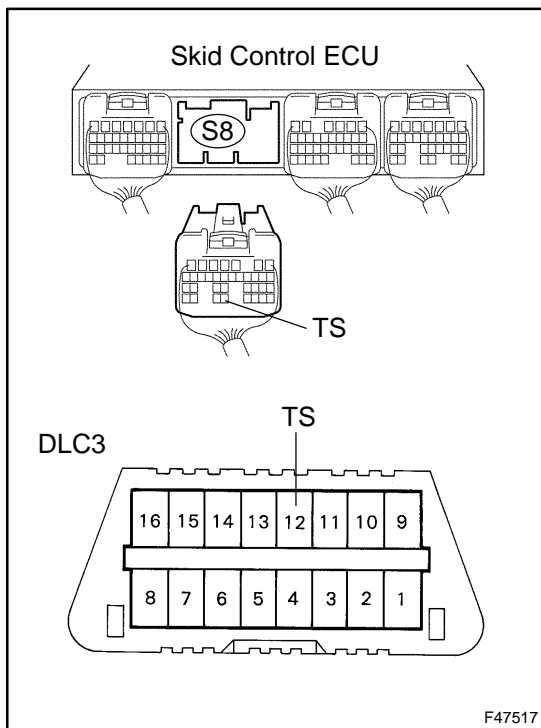
Standard:

Tester Connection	Specified Condition
D1-12 (TS) – D1-4 (CG)	10 to 14 V

NG → Go to step 3

OK

2 CHECK HARNESS AND CONNECTOR(DLC3 – SKID CONTROL ECU)



- (a) Disconnect the skid control ECU connector.
- (b) Measure the resistance according to the value(s) in the table below.

Standard:

Tester Connection	Specified Condition
S8-32 (TS) – D1-12 (TS)	Below 1 Ω

- (c) Measure the resistance according to the value(s) in the table below.

Standard:

Tester Connection	Specified Condition
S8-32 (TS) – Body ground	10 kΩ or higher

NG → REPAIR OR REPLACE HARNESS OR CONNECTOR

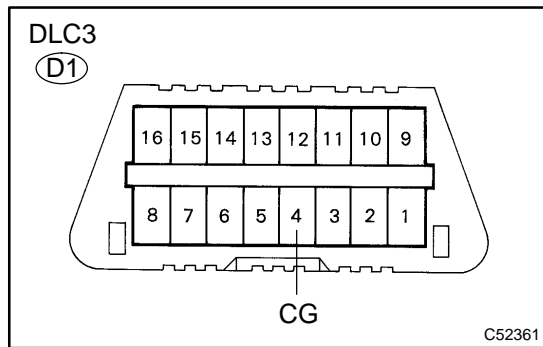
OK

REPLACE SKID CONTROL ECU ASSY (SEE PAGE 32-68)

NOTICE:

When replacing the skid control ECU assy, perform initialization of linear solenoid valve and calibration (see page 05-958).

3 CHECK HARNESS AND CONNECTOR(DLC3 – BODY GROUND)



- (a) Measure the resistance according to the value(s) in the table below.

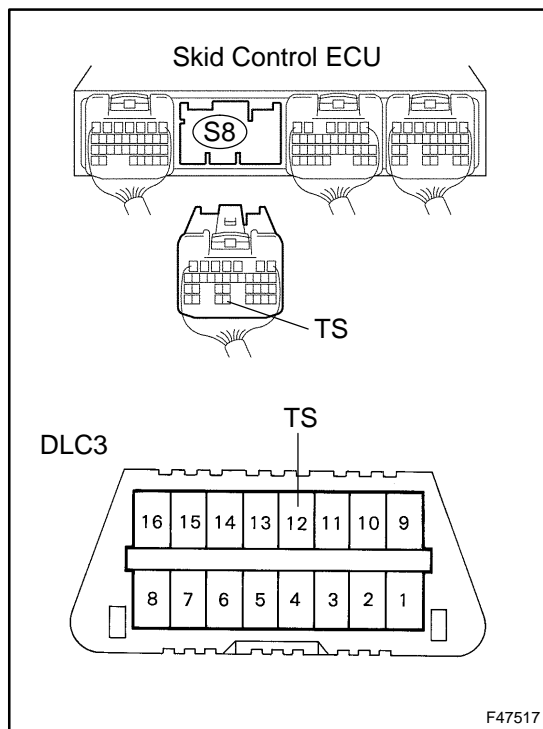
Standard:

Tester Connection	Specified Condition
D1-4 (CG) – Body ground	Below 1 Ω

NG REPAIR OR REPLACE HARNESS OR CONNECTOR

OK

4 CHECK HARNESS AND CONNECTOR(DLC3 – SKID CONTROL ECU)



- (a) Disconnect the skid control ECU connector.
(b) Measure the resistance according to the value(s) in the table below.

Standard:

Tester Connection	Specified Condition
S8-32 (TS) – D1-12 (TS)	Below 1 Ω

- (c) Measure the resistance according to the value(s) in the table below.

Standard:

Tester Connection	Specified Condition
S8-32 (TS) – Body ground	10 kΩ or higher

NG REPAIR OR REPLACE HARNESS OR CONNECTOR

OK

REPLACE SKID CONTROL ECU ASSY (SEE PAGE 32-68)

NOTICE:

When replacing the skid control ECU assy, perform initialization of linear solenoid valve and calibration (see page 05-958).