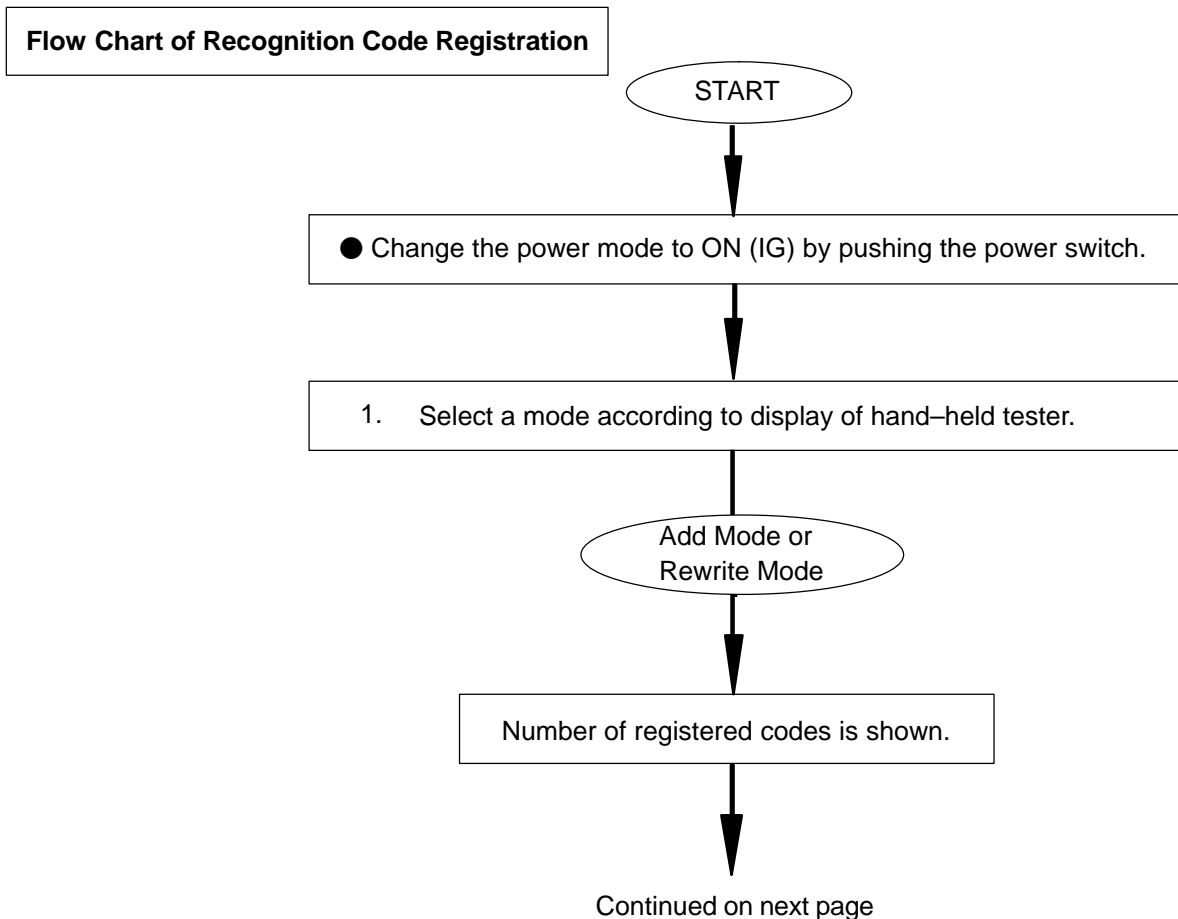


# REGISTRATION

**HINT:**

- Register a recognition code to the multiplex network body ECU when the door control transmitter or the door control receiver (see page 05-2333 and 05-2158).
- The add mode is used to register new recognition codes while still retaining codes already registered. This mode is used when a new transmitter is added. If the number of registered codes exceeds 4, the previously registered codes will be erased in order, starting from the first registered code.
- The rewrite mode is used to erase all the previously registered recognition codes in order to register new recognition codes. This mode is used when the transmitter or the door control receiver is exchanged for a new one.
- The confirmation mode is used to confirm how many recognition codes have already been registered before an additional registration of a recognition codes.
- The prohibition mode is used to erase all the registered codes and disables the wireless door lock function. This mode is used when the transmitter is lost.
- All of the following registration procedures must be performed in order continuously.

## 1. REGISTER RECOGNITION CODE



Continued from previous page

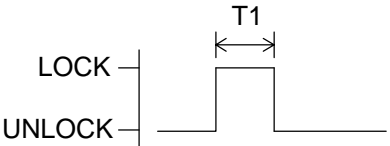
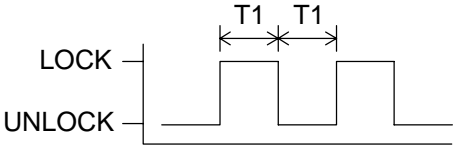
2. Press LOCK and UNLOCK switch on transmitter simultaneously.

Within 3 seconds

3. Press either switch.

Within 30 seconds

**Response to registration completion:**  
 Body ECU automatically performs power door LOCK-UNLOCK operation to show which mode has been selected.

<b>LOCK-UNLOCK Occurs Once</b>	<b>LOCK-UNLOCK Occurs Twice</b>
Registration of recognition code has been completed.	Registration of recognition code has failed.
	
<b>T1: Approx. 1 second</b>	

**HINT:**  
 If LOCK-UNLOCK operation is performed twice, registration of recognition code has failed. Perform registration procedures by beginning once again.

Within 40 seconds

Proceed to flow chart to finish registration.

If other transmitter is to be registered.  
**HINT:**  
 4 recognition codes can be registered at once.

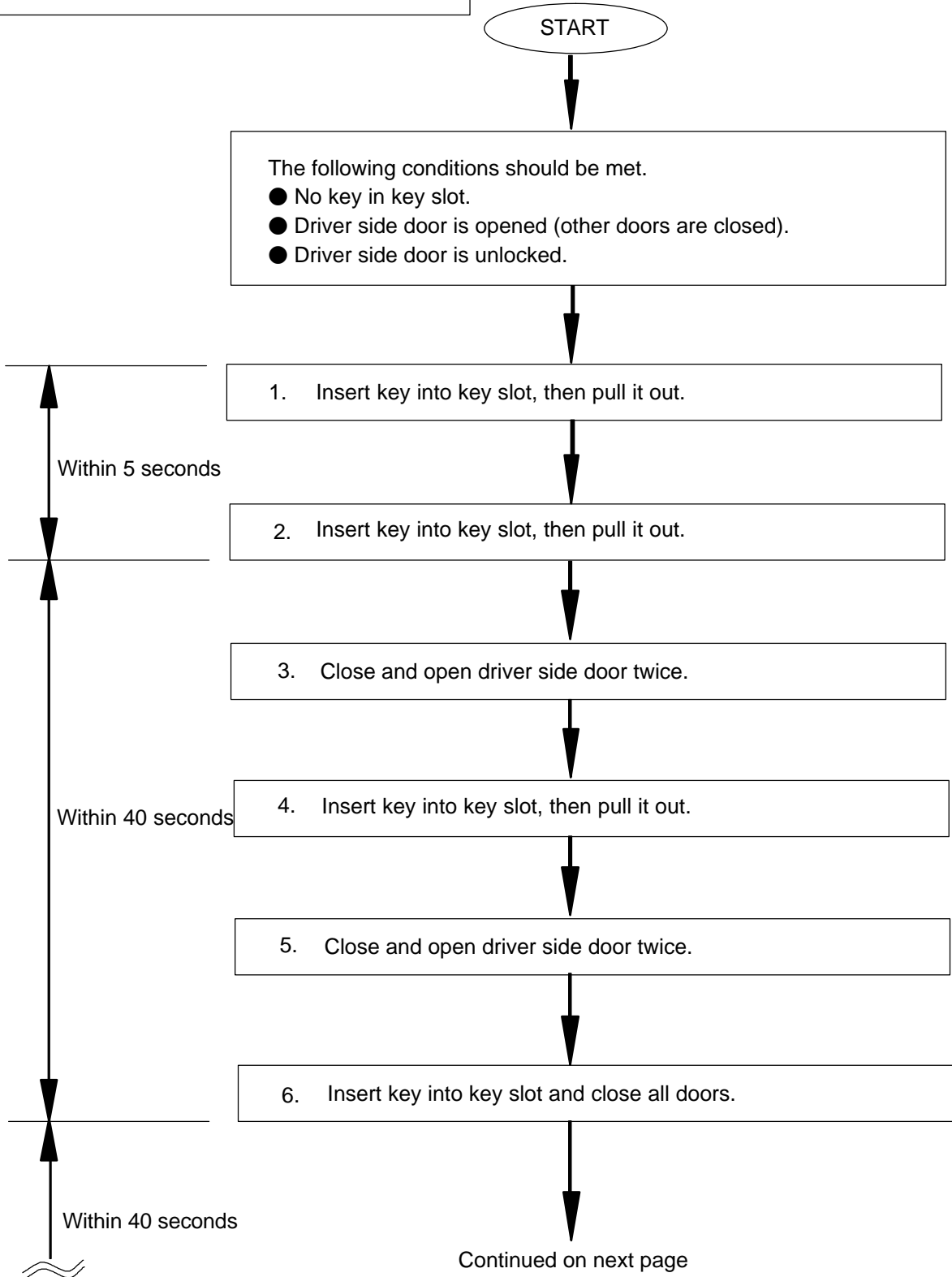
Perform either of the following.

- ☑ Use hand-held tester to order completion.
- ☑ Disconnect hand-held tester.

Registration of recognition codes (add mode and rewrite mode) is completed.

2. REGISTER RECOGNITION CODE

Flow Chart of Recognition Code Registration



Continued from previous page

**Mode Selection:**

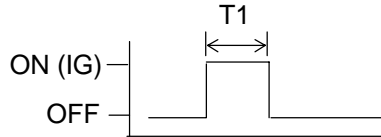
- 7. Change the power switch's power mode between ON (IG) and OFF repeatedly once within 1 seconds by pushing the power switch.

**Number of ON (IG)-OFF operations of power switch:**

**Add Mode**

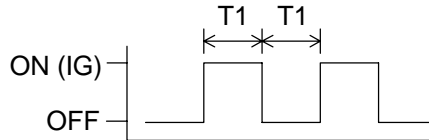
ON (IG)-OFF operation: 1 time

**T1: Approx. 1 second**



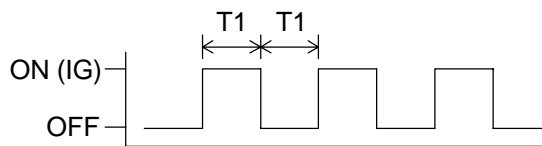
**Rewrite Mode**

ON (IG)-OFF operation: 2 times



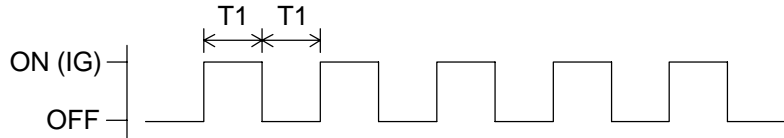
**Confirmation Mode**

ON (IG)-OFF operation: 3 times



**Prohibition Mode**

ON (IG)-OFF operation: 5 times



If the number of the ON (IG)-OFF operations of changing the power switch's power mode is 0, 4 or 6 or more, there will be no response (power door lock and unlock operation) to show which mode has been selected.

Within 40 seconds

- 8. Remove key from key slot.

Within 5 seconds

Continued on next page

Within 5 seconds

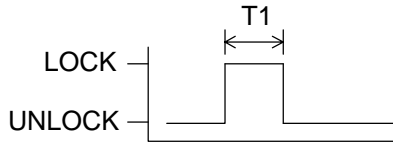
Continued from previous page

**Response to selected mode (Power door lock operation):**

Body ECU automatically performs power door LOCK-UNLOCK operation to inform which mode has been selected.

**Add Mode**

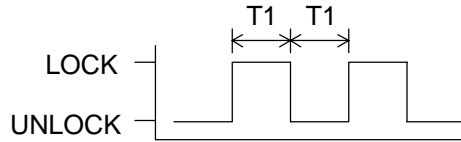
LOCK-UNLOCK operation: 1 time



**T1: Approx. 1 second**  
**T2: Approx. 2 seconds**

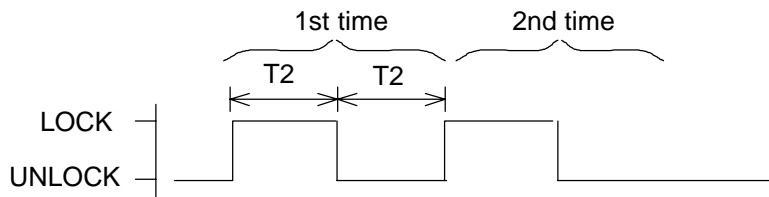
**Rewrite Mode**

LOCK-UNLOCK operation: 2 times



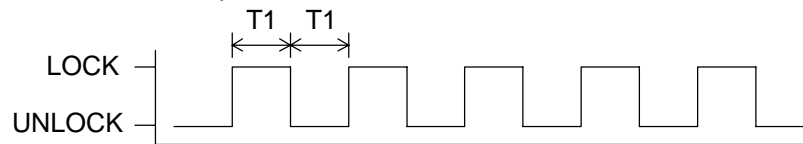
**Confirmation Mode**

LOCK-UNLOCK operation: The number of registered codes (1 to 5 times)



**Prohibition Mode**

LOCK-UNLOCK operation: 5 times



**HINT:**

- In confirmation mode, when LOCK/UNLOCK operation is performed twice, the number of registered recognition codes is 2.
- In confirmation mode, when 0 codes are registered, LOCK/UNLOCK operation is automatically performed 5 times.

Within 40 seconds

