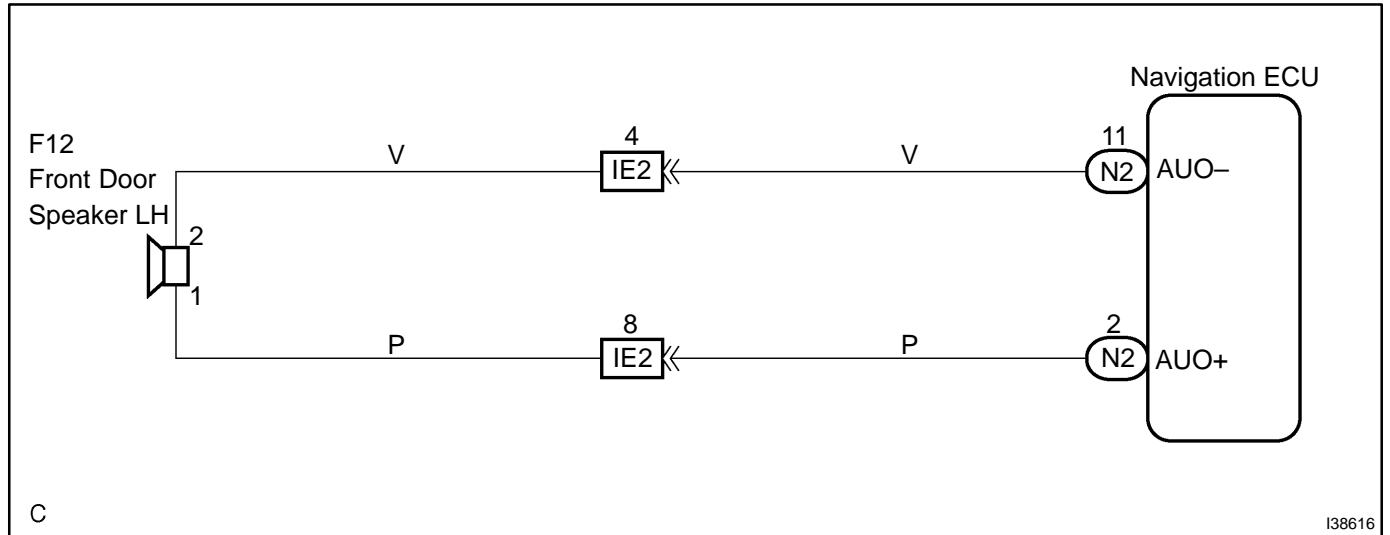


SPEAKER CIRCUIT (NAVIGATION VOICE)

CIRCUIT DESCRIPTION

This circuit is used when the voice guidance in the navigation system is on.

WIRING DIAGRAM



INSPECTION PROCEDURE

1 INSPECT FRONT NO. 1 SPEAKER ASSY

- (a) Disconnect the speaker connector.
- (b) Resistance check.
 - (1) Measure the resistance between the terminals of the speaker.

NOTICE:

The speaker should not be removed for checking.

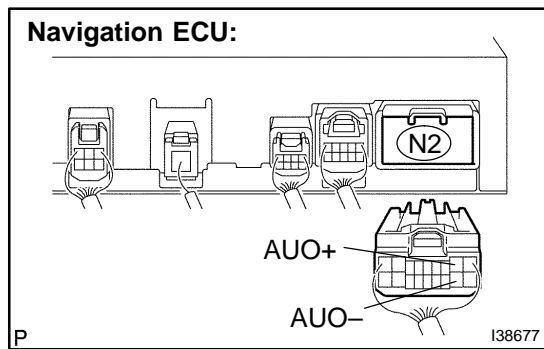
Standard Models: 4 Ω

JBL Models: 2.6 Ω

NG REPLACE FRONT NO. 1 SPEAKER ASSY
(SEE PAGE 67-8)

OK

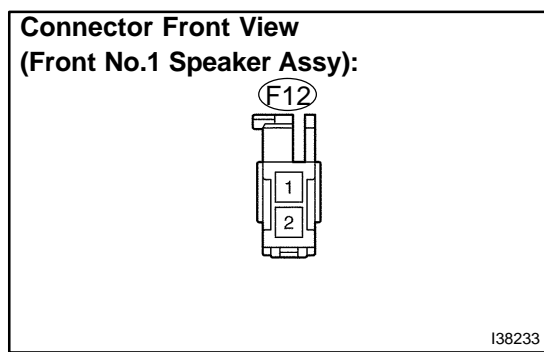
2 CHECK HARNESS AND CONNECTOR(FRONT NO. 1 SPEAKER ASSY – NAVIGATION ECU)



- (a) Disconnect the connector from navigation ECU N2 and front No.1 speaker assy F12.
- (b) Measure the resistance according to the value(s) in the table below.

Standard:

Tester connection	Condition	Specified condition
F12-1 – AUO+	Always	Below 1 Ω
F12-2 – AUO-	Always	Below 1 Ω
F12-1 – Body ground	Always	10 kΩ or higher
F12-2 – Body ground	Always	10 kΩ or higher



NG REPAIR OR REPLACE HARNESS OR CONNECTOR

OK

REPLACE NAVIGATION ECU (SEE PAGE 67-23)