

GPS MARK IS NOT DISPLAYED

INSPECTION PROCEDURE

1 CHECK CABIN

- (a) Check the cabin for any object that might interrupt radio reception on the instrument panel. If such an object exists, remove it and check if the GPS mark reappears.

HINT:

GPS works using extremely weak radio waves originating from satellites. If the signal is interrupted by obstructions or another radio wave, the GPS system may not be able to properly receive the signal.

OK: Mark appears.

OK

NORMAL OPERATION

NG

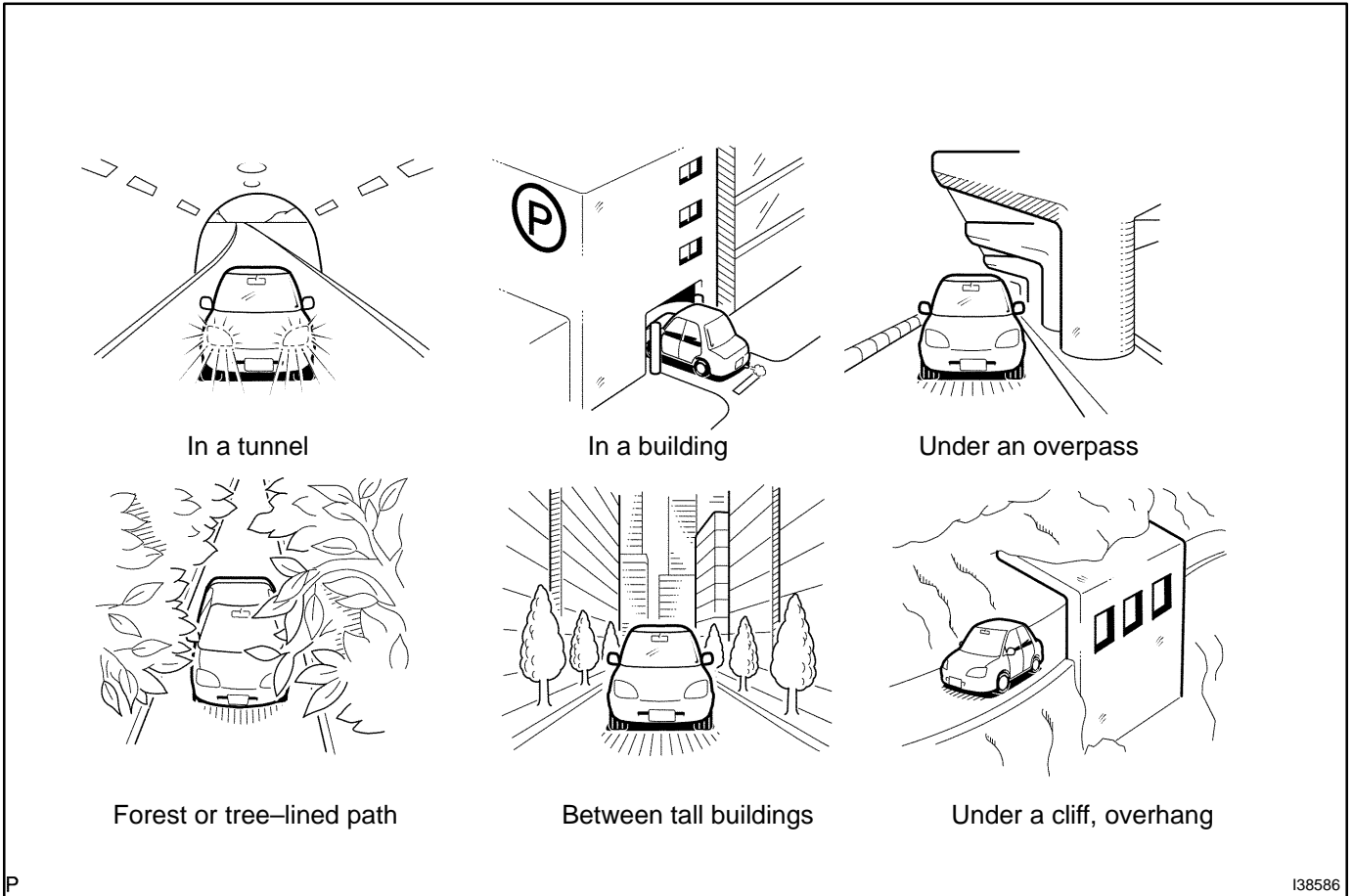
2 CHECK SURROUNDINGS

- (a) Check if the vehicle is in a location where GPS signal reception is bad. If the vehicle is in such a place, move it elsewhere and check if the GPS mark reappears.

HINT:

- GPS uses 24 satellites in 6 orbits so that at any time 5 satellites will be in line-of-sight of your vehicle.
- GPS signals may not be received, however, based on surroundings, vehicle direction, and time.

- The following illustrations show some conditions where it may be difficult to receive GPS signals.



OK: GPS mark is displayed.

OK RETURNS TO NORMAL

NG

3 NAVIGATION CHECK MODE(GPS INFORMATION)

(a) Enter the "Navigation Check" mode (GPS information) (see page 05-1858).

GPS Information					Navi Menu				
No.	Elv	Azm	LVL	STS	No.	Elv	Azm	LVL	STS
3	73°	/021°	12	P	5	80°	/279°	54	P
8	52°	/183°	58	P	9	27°	/121°	26	-
10	32°	/219°	39	P	13	19°	/330°	11	-
16	49°	/097°	20	T	18	22°	/300°	12	-
20	61°	/045°	39	T	21	40°	/142°	49	T
23	72°	/278°	57	P	24	17°	/350°	13	-
Measurement		Date	98/05/47 09:46:00						
status: 3D		Latitude	39° 58' 137° 00.12'						

P

138226

(b) Check how many of the following codes occur in the "STS" column.

For DENSO Models: T, P
For AISIN AW Models: 04H, 08H
OK: At least 3 codes occur.

OK REPLACE NAVIGATION ECU (SEE PAGE 67-23)

NG

PROCEED TO NEXT CIRCUIT INSPECTION SHOWN IN PROBLEM SYMPTOMS TABLE (SEE PAGE 05-1873)