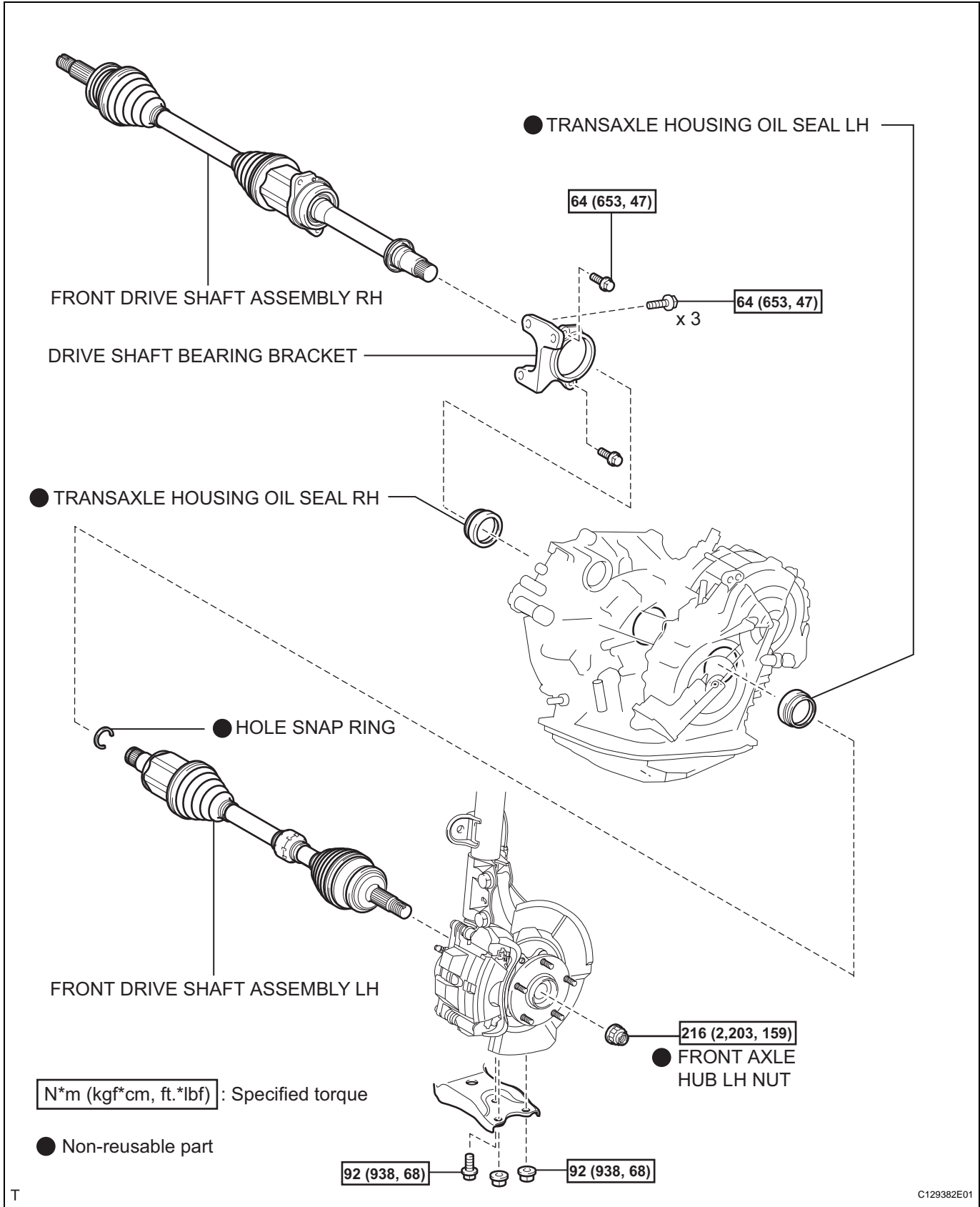


# DIFFERENTIAL OIL SEAL

## COMPONENTS

AX



## REPLACEMENT

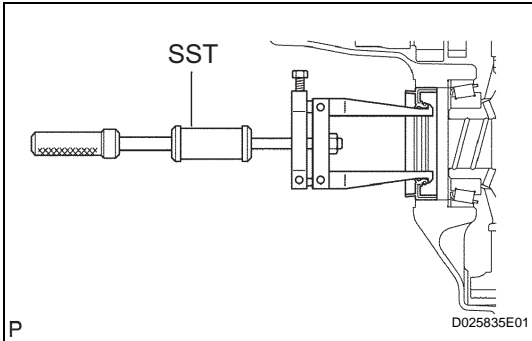
1. **DRAIN AUTOMATIC TRANSAXLE FLUID**
  - (a) Remove the drain plug, gasket and drain ATF.
  - (b) Install a new gasket and drain plug.  
**Torque: 47 N\*m (479 kgf\*cm, 35 ft.\*lbf)**

2. **REMOVE FRONT DRIVE SHAFT ASSEMBLY**
  - (a) Remove the drive shaft (see page [DS-7](#)).

3. **REMOVE DRIVE SHAFT BEARING BRACKET**
  - (a) Remove the 3 bolts and bracket.

4. **REMOVE TRANSAXLE HOUSING OIL SEAL LH AND RH**

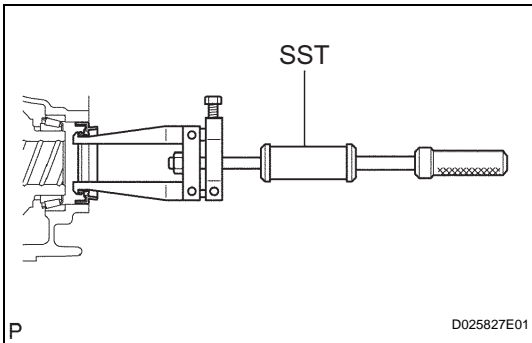
- (a) Using SST, tap out the oil seal LH.  
**SST 09308-00010**



- (b) Using SST, tap out the oil seal RH.  
**SST 09308-00010**

5. **INSTALL TRANSAXLE HOUSING OIL SEAL LH AND RH**

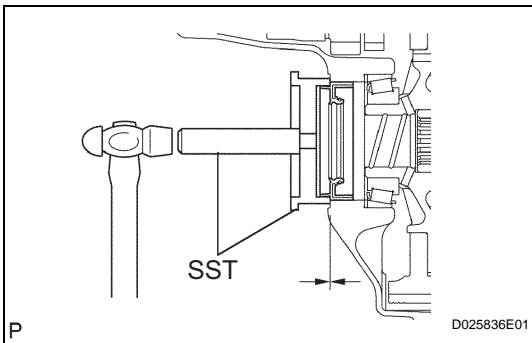
- (a) Coat the lip of a new oil seal LH with MP grease.



- (b) Using SST and a hammer, tap in the oil seal LH.  
**SST 09608-32010, 09950-70010 (09951-07150)**  
**Standard depth:**

**0 +-0.5 mm (0 +-0.020 in.)**

- (c) Coat the lip of a new oil seal LH with MP grease.



- (d) Using SST and a hammer, tap in the oil seal RH.  
**SST 09608-32010, 09950-70010 (09951-07150)**  
**Standard depth:**

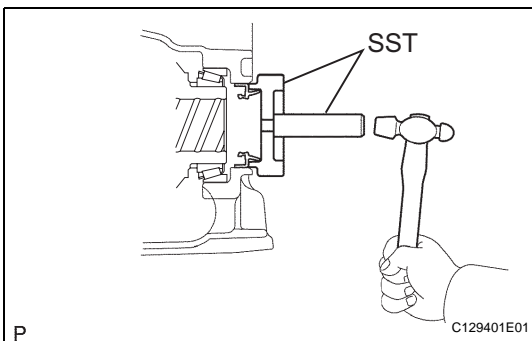
**0 +-0.5 mm (0 +-0.020 in.)**

6. **INSTALL DRIVE SHAFT BEARING BRACKET**

- (a) Install the bracket with the 3 bolts.  
**Torque: 64 N\*m (653 kgf\*cm, 47 ft.\*lbf)**

7. **INSTALL FRONT DRIVE SHAFT ASSEMBLY**

- (a) Install the front drive shaft (see page [DS-32](#)).



**8. ADD AUTOMATIC TRANSAXLE FLUID****Fluid type:****Toyota Genuine ATF WS****9. INSPECT TRANSAXLE FLUID LEVEL**(a) Inspect the transaxle fluid level (see page [AX-102](#)).