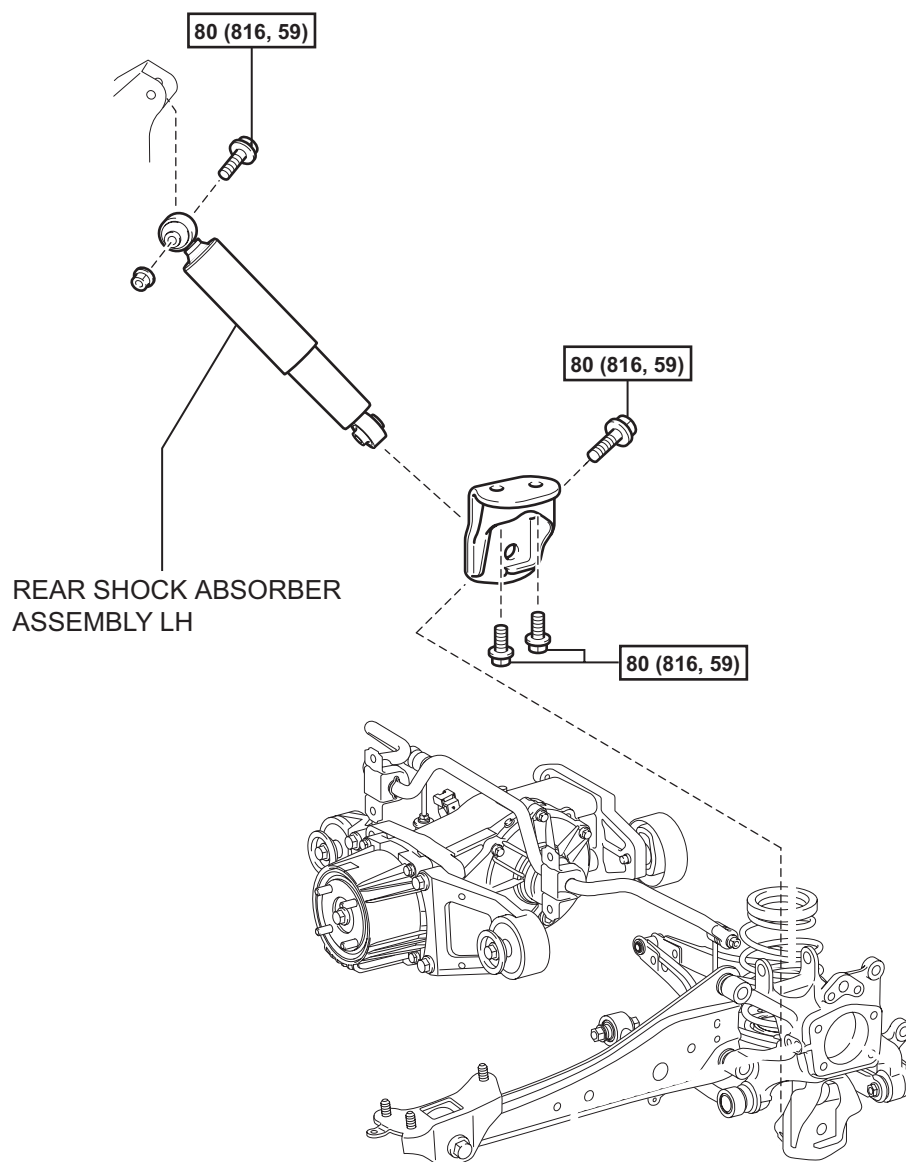


REAR SHOCK ABSORBER

COMPONENTS



$\boxed{\text{N}\cdot\text{m (kgf}\cdot\text{cm, ft.}\cdot\text{lbf)}}$: Specified torque

SP

REMOVAL

HINT:

- Use the same procedures for the RH side and LH side.
- The procedures listed below are for the LH side.

1. REMOVE REAR WHEEL

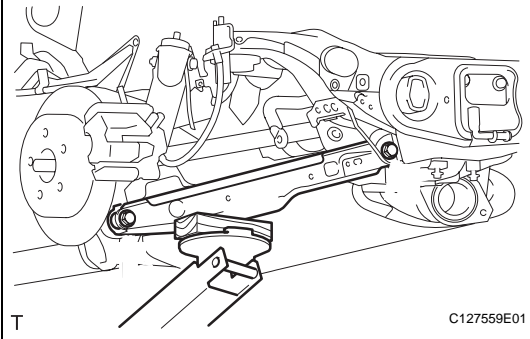
2. REMOVE REAR SHOCK ABSORBER ASSEMBLY LH

- (a) Support the No. 2 suspension arm LH with a jack.

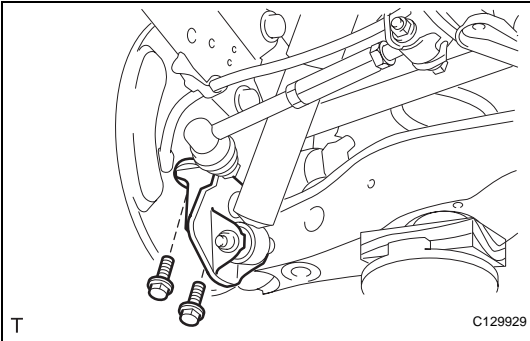
NOTICE:

Place a wooden or rubber block between the jack and arm.

- (b) Remove the bolt and 2 nuts from the suspension member and axle carrier.



- (c) Remove the 2 bolts and disconnect the shock absorber with the bracket.



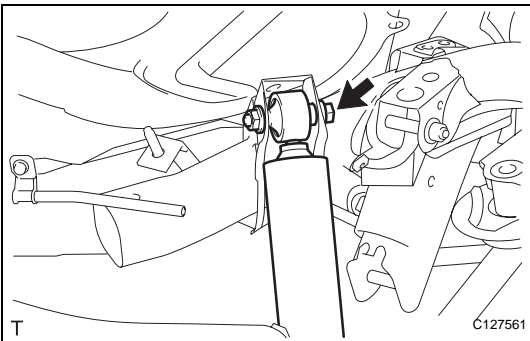
- (d) Remove the nut and bolt from the shock absorber upper side.

- (e) Remove the shock absorber from the vehicle.

- (f) Remove the nut and bolt from the bracket.

HINT:

While fixing the nut in place, loosen and remove the bolt.



INSPECTION

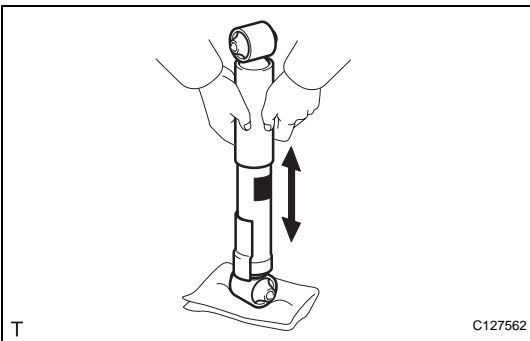
1. INSPECT REAR SHOCK ABSORBER ASSEMBLY LH

- (a) Compress and extend the shock absorber rod, and check that there is no abnormal resistance or unusual sound during operation.

If there is any abnormality, replace the shock absorber with a new one.

NOTICE:

When disposing of the shock absorber, see DISPOSAL (see page [SP-37](#)).



INSTALLATION

HINT:

- Use the same procedures for the RH side and LH side.
- The procedures listed below are for the LH side.

1. TEMPORARILY INSTALL REAR SHOCK ABSORBER ASSEMBLY LH

- Temporarily install the bracket to the shock absorber with the bolt and nut.

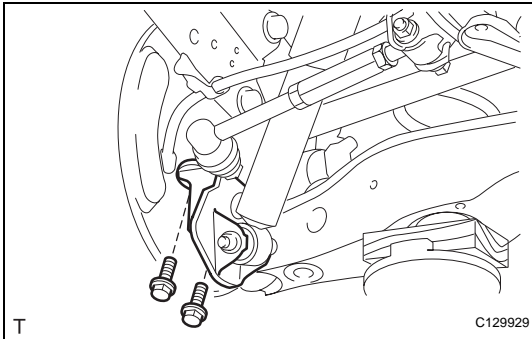
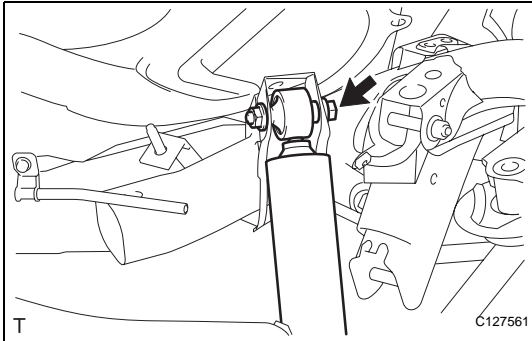
NOTICE:

Fix the nut in place and temporarily install the bolt.

- Temporarily install the shock absorber upper side to the suspension member with the bolt and nut.

NOTICE:

Fix the nut in place and temporarily install the bolt.



- Install the shock absorber with the 2 bolts to the axle carrier.

Torque: 80 N*m (816 kgf*cm, 59 ft.*lbf)

- Temporarily install the suspension arm with the bolt and 2 nuts to the suspension member and axle carrier.

2. TEMPORARILY INSTALL REAR UPPER CONTROL ARM ASSEMBLY LH (See page [SP-40](#))

3. INSTALL REAR WHEEL

Torque: 103 N*m (1,050 kgf*cm, 76 ft.*lbf)

4. STABILIZE SUSPENSION

- Lower the vehicle.
- Press down on the vehicle several times to stabilize the suspension.

5. TIGHTEN REAR SHOCK ABSORBER ASSEMBLY LH

- Fix the nut in place and tighten the bolt.

Torque: 80 N*m (816 kgf*cm, 59 ft.*lbf)

6. INSPECT AND ADJUST REAR WHEEL ALIGNMENT

- Inspect and adjust the rear wheel alignment (see page [SP-7](#)).