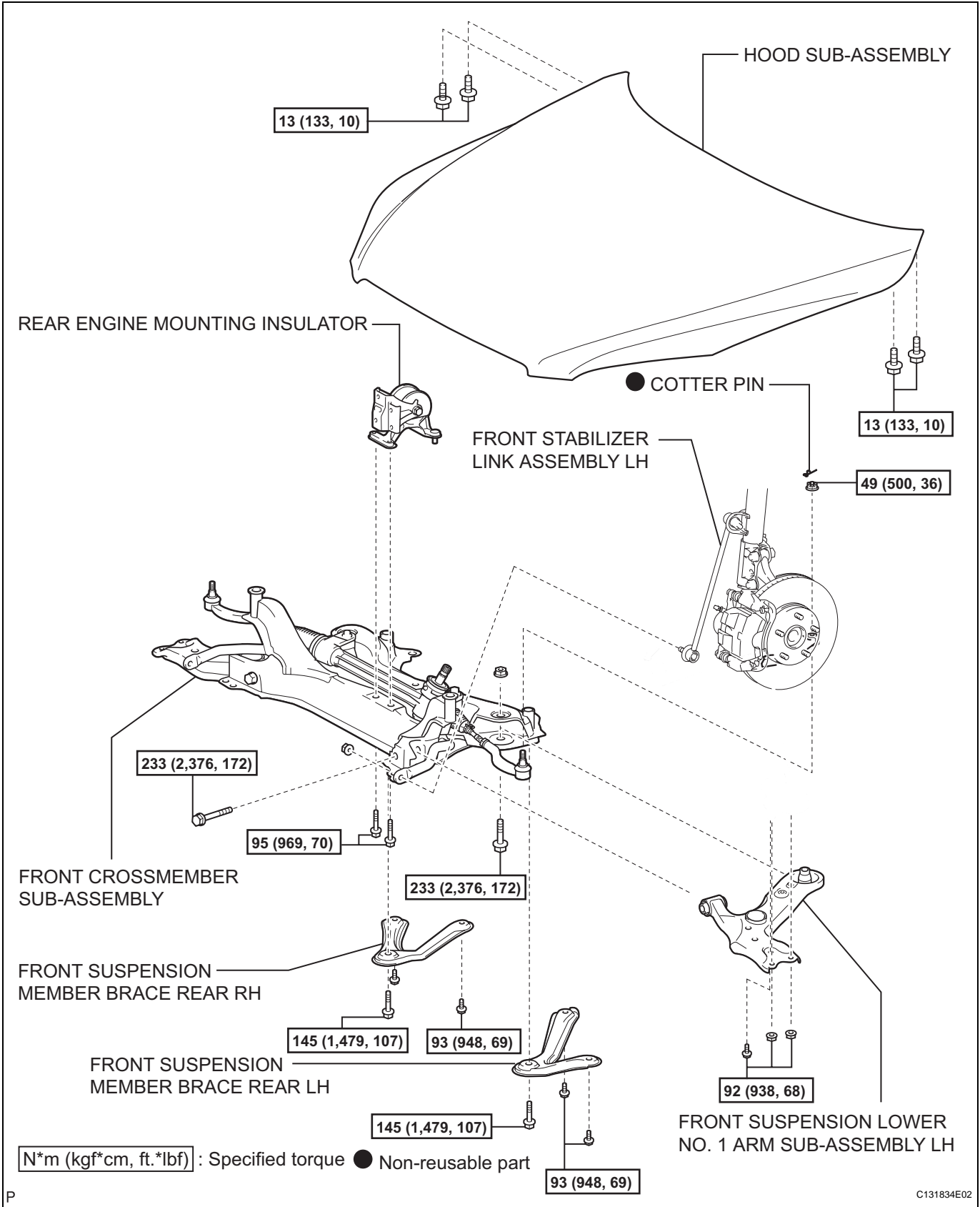


FRONT SUSPENSION LOWER NO. 1 ARM

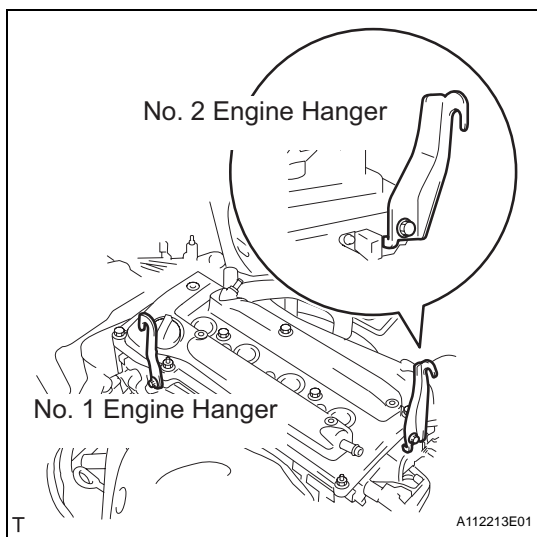
COMPONENTS

SP

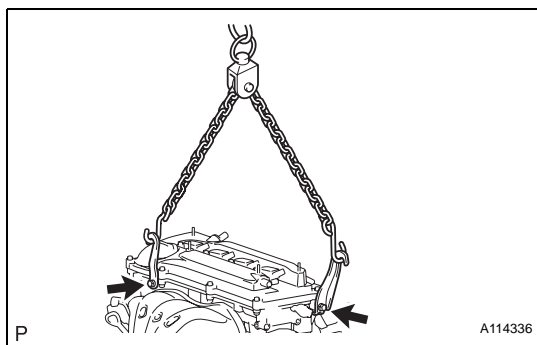


REMOVAL

1. REMOVE FRONT WHEEL
2. REMOVE HOOD SUB-ASSEMBLY
 - (a) Remove the hood (see page ED-4).
3. SUSPEND ENGINE ASSEMBLY
 - (a) Install the No. 1 and No. 2 engine hangers with the bolts as shown in the illustration.
Torque: 38 N*m (387 kgf*cm, 28 ft.*lbf)
Parts No.

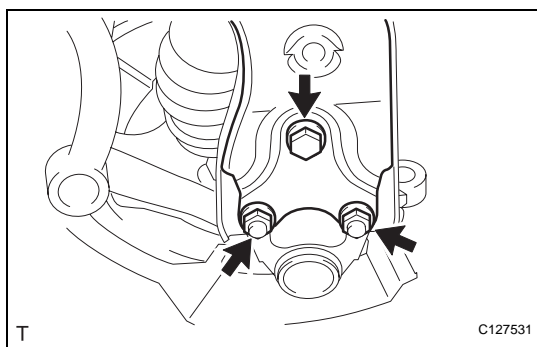


Item	Part No.
No. 1 Engine hanger	12281-28010
No. 2 Engine hanger	12282-28010
Bolt	91512-61020

SP


- (b) Attach the sling device and the engine with the chain block.

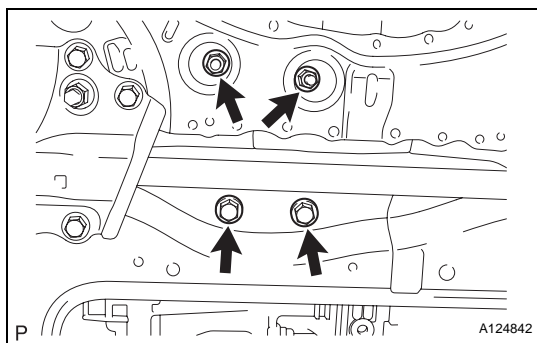
4. DISCONNECT FRONT STABILIZER LINK ASSEMBLY LH (See page SP-30)
5. DISCONNECT FRONT STABILIZER LINK ASSEMBLY RH
 - (a) Use the same procedure described for the LH side.



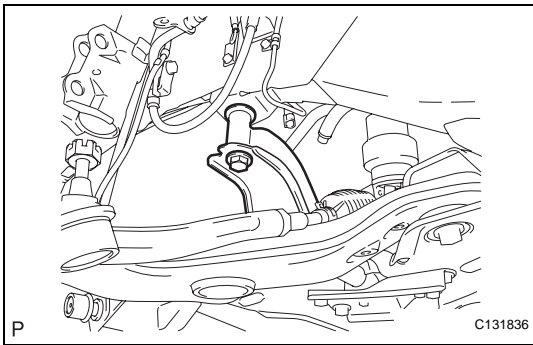
6. DISCONNECT FRONT SUSPENSION LOWER NO. 1 ARM SUB-ASSEMBLY LH
 - (a) Remove the 2 nuts and bolt, and disconnect the lower arm from the ball joint.

7. DISCONNECT FRONT SUSPENSION LOWER NO. 1 ARM SUB-ASSEMBLY RH

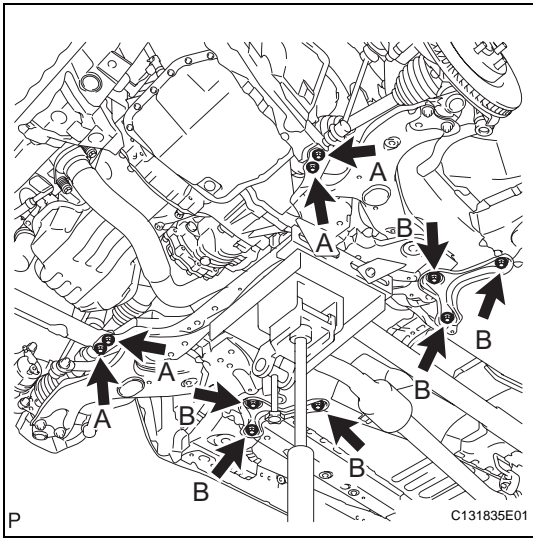
HINT:
Use the same procedures described for the LH side.



8. DISCONNECT FRONT CROSSMEMBER SUB-ASSEMBLY
 - (a) Remove the 2 nuts, 2 bolts and engine mounting insulator rear.



(b) Remove the bolt from the suspension member.



(c) Support the crossmember with the jack.

(d) Remove the bolts labeled A.

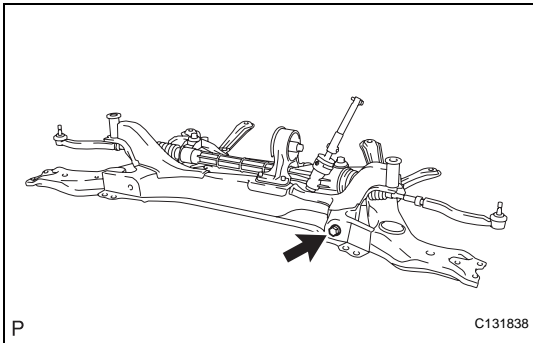
(1) Remove the 4 bolts from the member reinforcement.

(e) Remove the bolts labeled B.

(1) Remove the 6 bolts from the member brace.

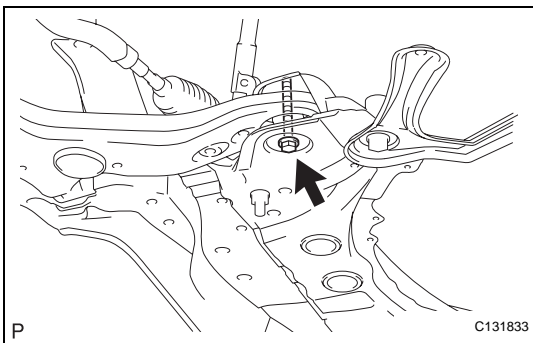
(f) Slowly lower the jack, and disconnect the crossmember from the vehicle.

SP



9. REMOVE FRONT SUSPENSION LOWER NO. 1 ARM SUB-ASSEMBLY LH

(a) Remove the bolt and nut from the suspension member (front side).



(b) Remove the bolt and nut from the suspension member (rear side). Then remove the lower arm.

10. REMOVE FRONT SUSPENSION LOWER NO. 1 ARM SUB-ASSEMBLY RH

HINT:

Use the same procedures described for the LH side.