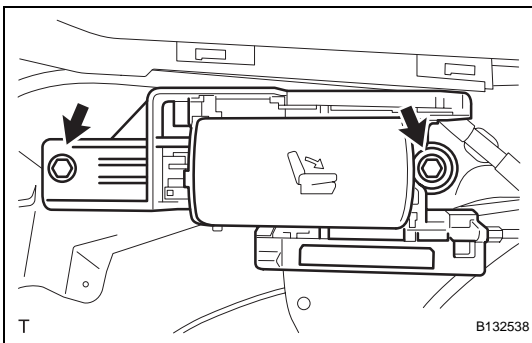
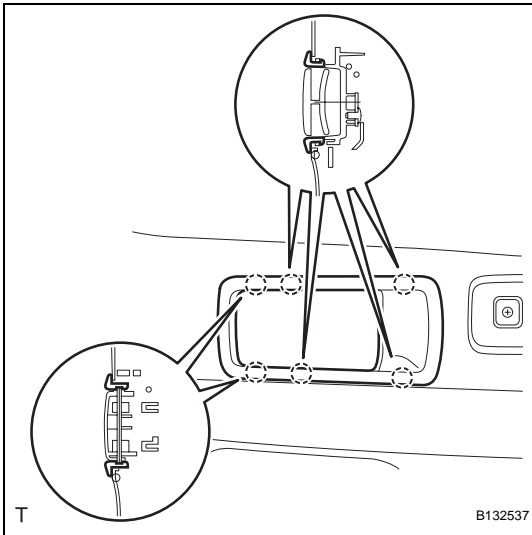


## REMOVAL

1. REMOVE PACKAGE TRAY TRIM POCKET SUB-ASSEMBLY (w/o Rear No. 2 Seat)
2. REMOVE TONNEAU COVER ASSEMBLY (w/o Rear No. 2 Seat)
3. REMOVE REAR FLOOR NO. 1 BOARD (w/o Rear No. 2 Seat)
4. REMOVE DECK BOARD ASSEMBLY (w/o Rear No. 2 Seat)
5. REMOVE REAR FLOOR NO. 3 BOARD (w/o Rear No. 2 Seat)
6. REMOVE REAR FLOOR NO. 2 BOARD (w/o Rear No. 2 Seat)
7. REMOVE REAR FLOOR NO. 1 MAT SUPPORT SIDE PLATE (w/o Rear No. 2 Seat) (See page [IR-31](#))
8. REMOVE BACK DOOR WEATHERSTRIP (w/o Rear No. 2 Seat)
9. REMOVE REAR FLOOR FINISH PLATE (w/o Rear No. 2 Seat) (See page [IR-31](#))
10. REMOVE RECLINING REMOTE CONTROL LEVER BEZEL LH (w/o Rear No. 2 Seat)
  - (a) Using a screwdriver, detach the 6 claws and remove the bezel.

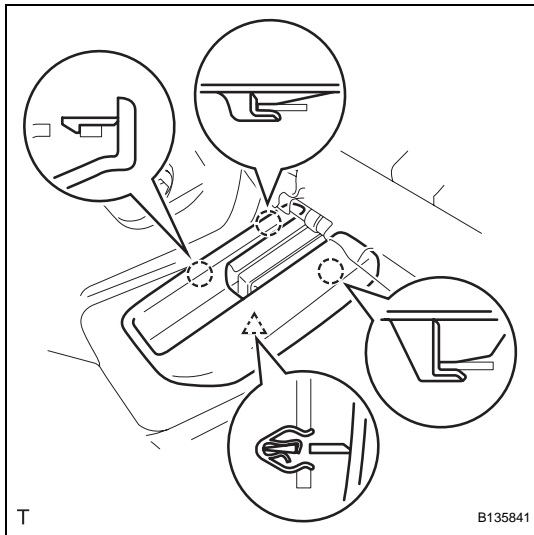
HINT:  
Tape the screwdriver tip before use.
11. REMOVE TETHER ANCHOR BRACKET SUB-ASSEMBLY (w/o Rear No. 2 Seat) (See page [IR-32](#))
12. REMOVE DECK TRIM SIDE PANEL ASSEMBLY LH (w/o Rear No. 2 Seat) (See page [IR-32](#))

SE



13. REMOVE RECLINING REMOTE CONTROL LEVER SUB-ASSEMBLY LH (w/o Rear No. 2 Seat)
  - (a) Remove the 2 bolts and lever.
  - (b) Disconnect the rear No. 1 seat lock cable from the lever.

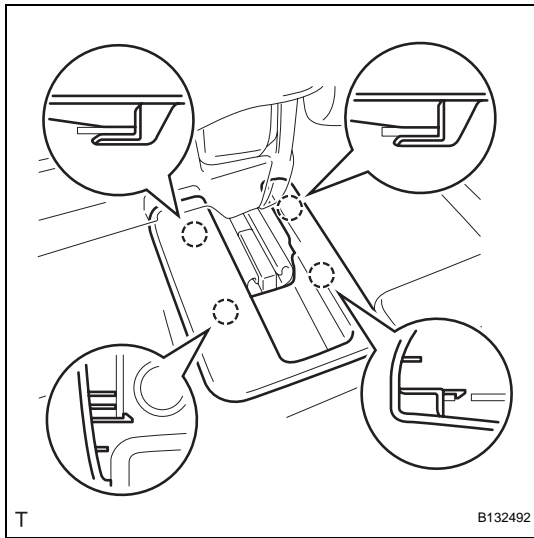
SE

**14. REMOVE REAR NO. 5 SEAT LEG SIDE COVER**

- (a) Using a screwdriver, detach the 3 claws and clip, and remove the side cover.

HINT:

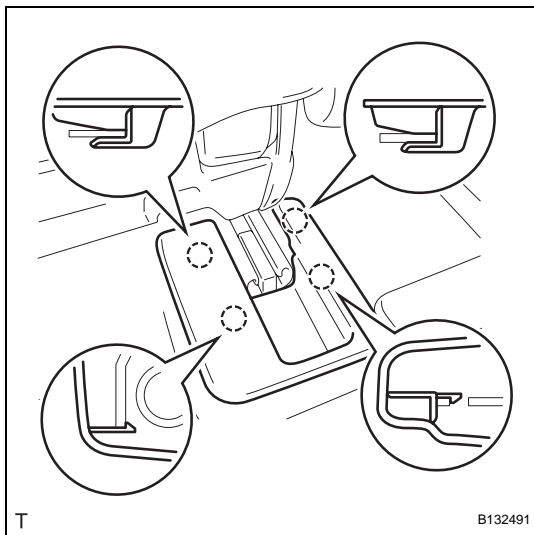
Tape the screwdriver tip before use.

**15. REMOVE REAR NO. 4 SEAT LEG SIDE COVER (w/ Rear No. 2 Seat)**

- (a) Using a screwdriver, detach the 4 claws and remove the side cover.

HINT:

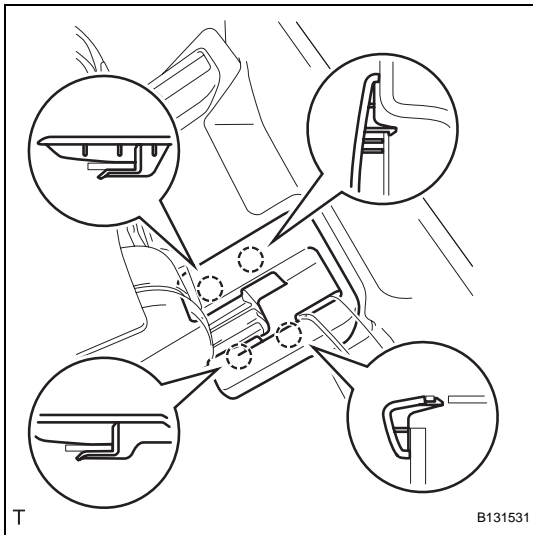
Tape the screwdriver tip before use.

**16. REMOVE REAR NO. 4 SEAT LEG SIDE COVER (w/o Rear No. 2 Seat)**

- (a) Using a screwdriver, detach the 4 claws and remove the side cover.

HINT:

Tape the screwdriver tip before use.

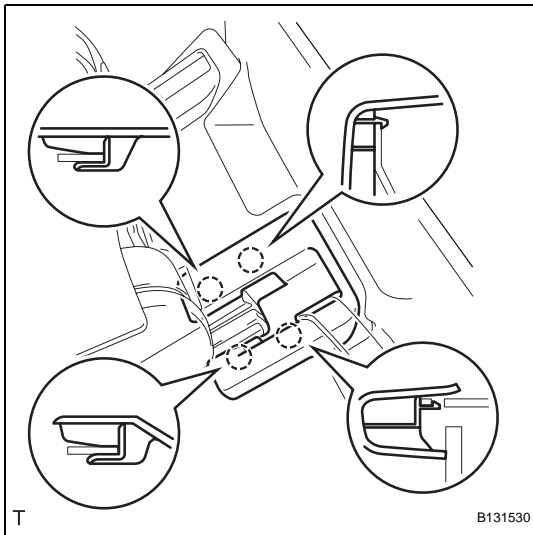


### 17. REMOVE REAR NO. 3 SEAT LEG SIDE COVER (w/ Rear No. 2 Seat)

- (a) Using a screwdriver, detach the 4 claws and remove the side cover.

HINT:

Tape the screwdriver tip before use.

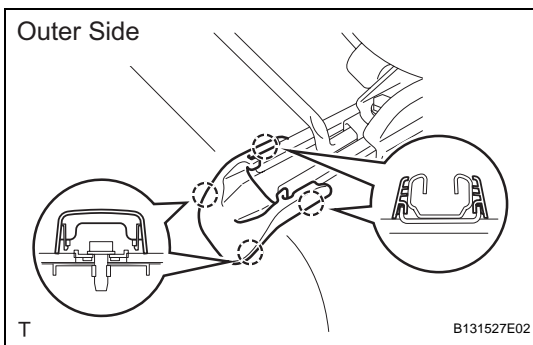


### 18. REMOVE REAR NO. 3 SEAT LEG SIDE COVER (w/o Rear No. 2 Seat)

- (a) Using a screwdriver, detach the 4 claws and remove the side cover.

HINT:

Tape the screwdriver tip before use.



### 19. REMOVE REAR SEAT LEG COVER

- (a) Using a screwdriver, detach the 8 claws and remove the 2 leg covers.

HINT:

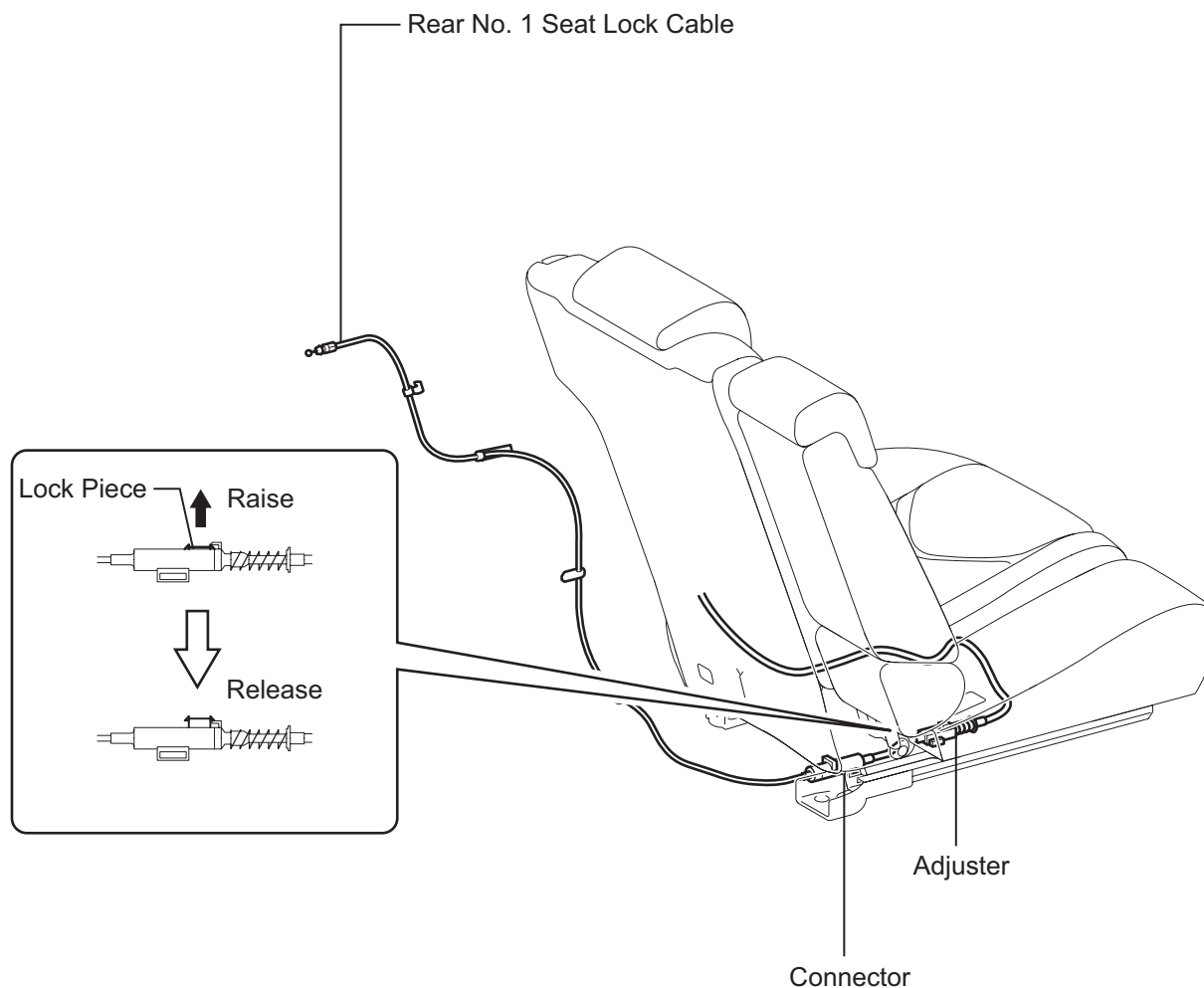
Tape the screwdriver tip before use.

### 20. REMOVE REAR SEAT LAP TYPE BELT ASSEMBLY CENTER RH (w/ Rear No. 2 Seat) (See page [SB-39](#))

### 21. REMOVE REAR SEAT LAP TYPE BELT ASSEMBLY CENTER RH (w/o Rear No. 2 Seat) (See page [SB-39](#))

**22. REMOVE REAR NO. 1 SEAT LOCK CABLE ASSEMBLY (w/o Rear No. 2 Seat)**

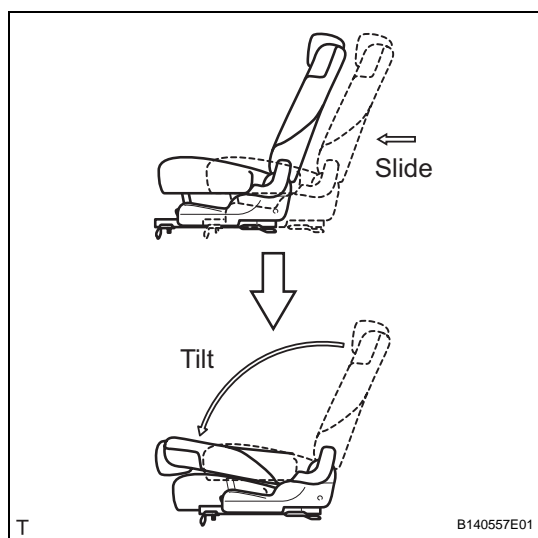
- (a) Disconnect the lock cable from the seat.  
(1) Raise the adjuster's lock piece to release the lock.



T

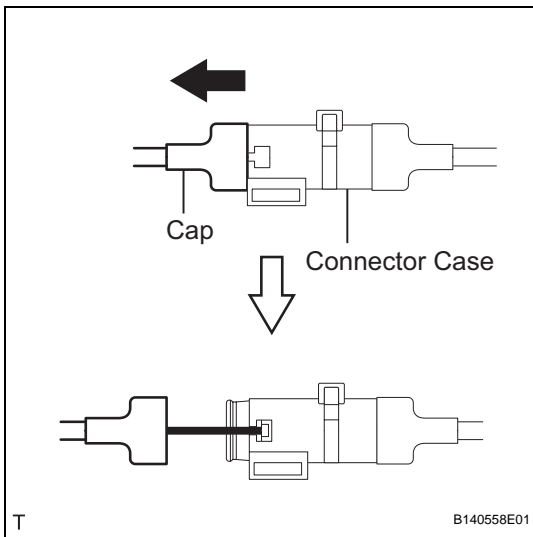
B140563E01

- (2) Slide the seat forward and tilt the seatback forward.

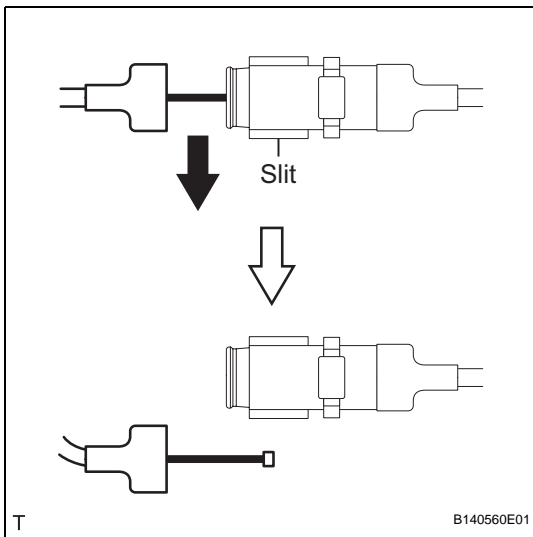


T

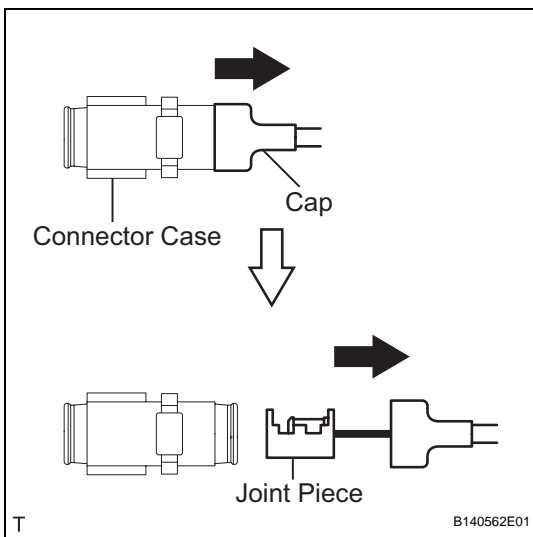
B140557E01



- (3) Remove the seat's cap from the connector case.

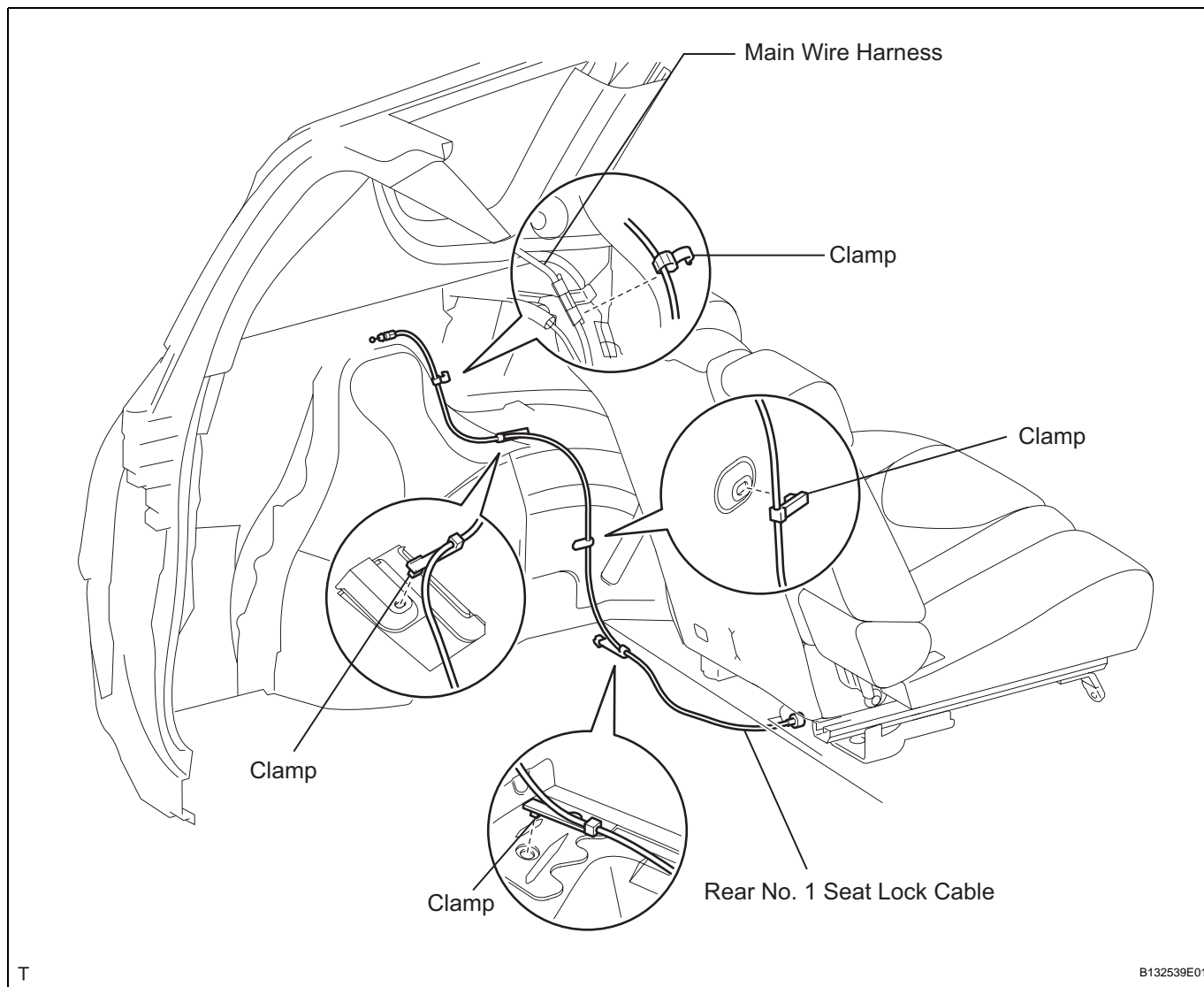


- (4) Pull the seat's cap toward the outside of the vehicle. Then remove the cable from the connector case's slit.



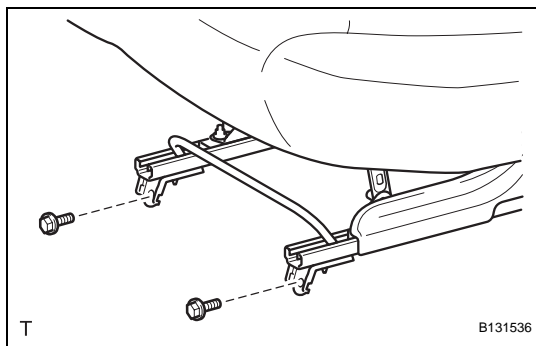
- (5) Remove the body's cap from the connector case.

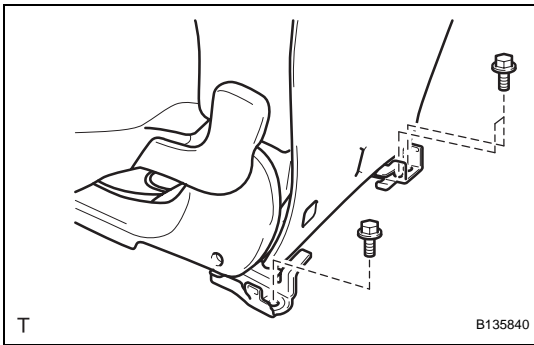
(b) Detach the clamps and remove the lock cable.



### 23. REMOVE REAR NO. 1 SEAT ASSEMBLY LH

- (a) Lift up the seat track adjusting handle and move the seat to the rearmost position.
- (b) Remove the 2 bolts on the front side of the seat.
- (c) Lift up the seat track adjusting handle and move the seat to the foremost position.





- (d) Remove the 3 bolts on the rear side of the seat.
- (e) Fully tilt the seatback forward. Then remove the seat.

**NOTICE:**

**Be careful not to damage the vehicle body,**