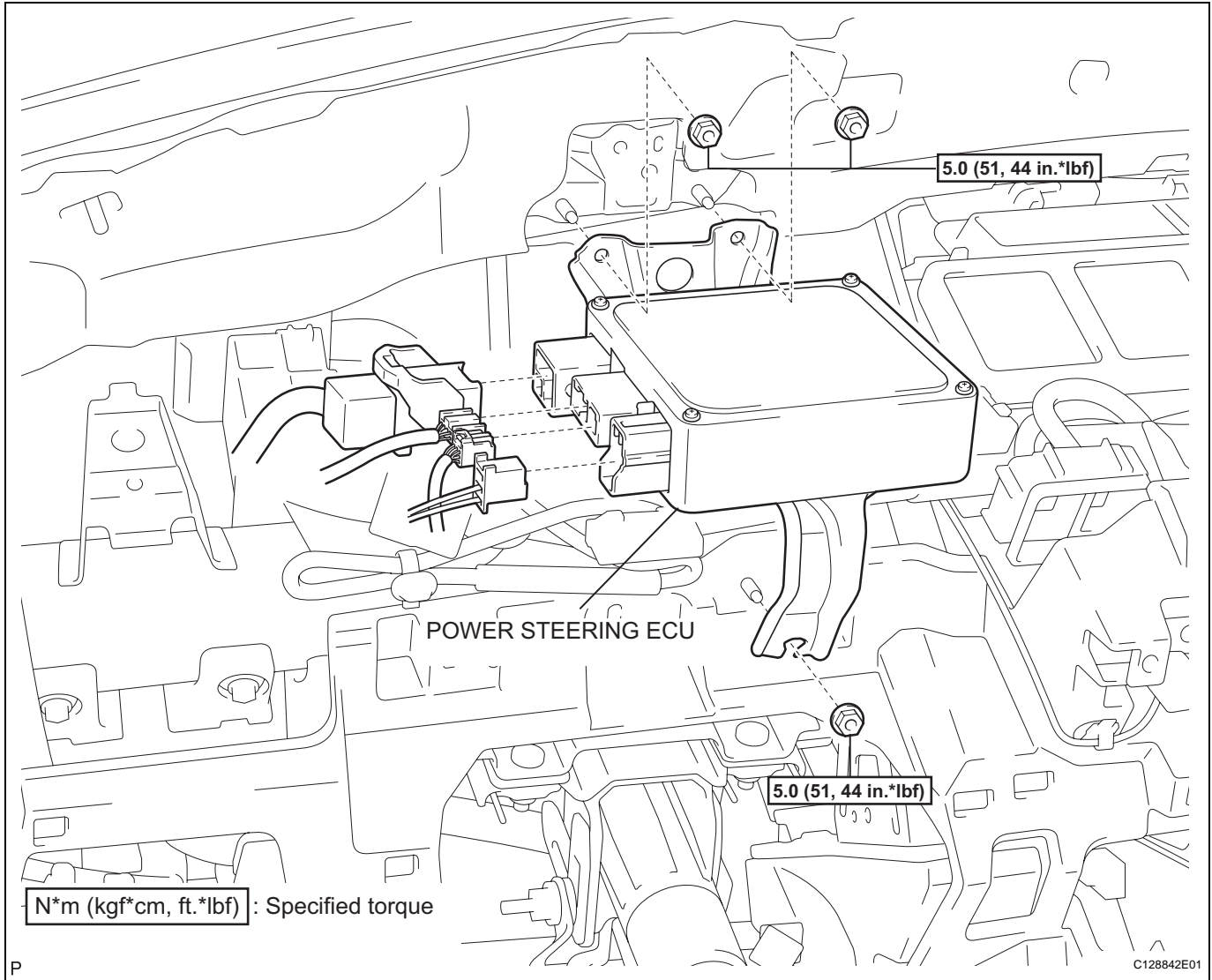


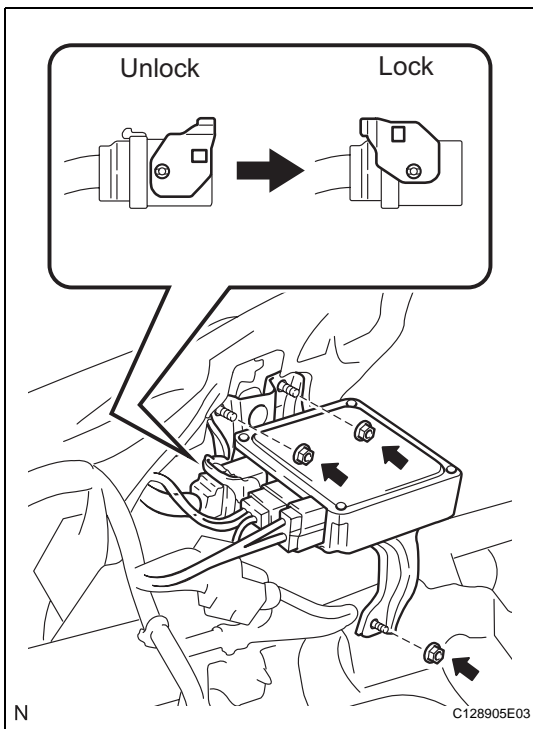
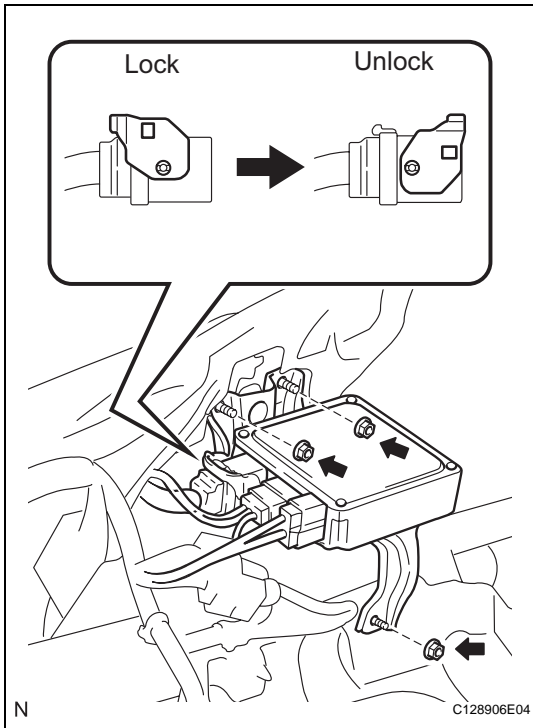
# POWER STEERING ECU

## COMPONENTS



## REMOVAL

1. **DISCONNECT CABLE FROM NEGATIVE BATTERY TERMINAL**
2. **REMOVE INSTRUMENT PANEL SUB-ASSEMBLY UPPER**
  - (a) Remove the instrument panel (see page [IP-4](#)).
3. **REMOVE POWER STEERING ECU**
  - (a) Disconnect the 4 connectors.
  - (b) Remove the 3 nuts and remove the power steering ECU.



## INSTALLATION

1. **INSTALL POWER STEERING ECU**
  - (a) Install the power steering ECU with the 3 nuts.  
**Torque: 5.0 N\*m (51 kgf\*cm, 44 in.\*lbf)**
  - (b) Connect the 4 connectors.
2. **INSTALL INSTRUMENT PANEL SUB-ASSEMBLY UPPER**
  - (a) Install the instrument panel (see page [IP-9](#)).
3. **CONNECT CABLE TO NEGATIVE BATTERY TERMINAL**