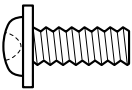
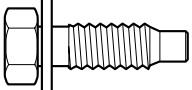
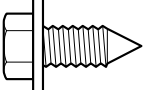
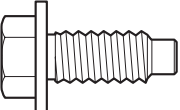
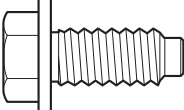
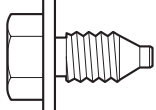


## REMOVAL

### 1. TABLE OF BOLT, SCREW AND NUT

#### HINT:

All bolts, screws and nuts relevant to installing and removing the instrument panel are shown along with their alphabet codes in the table below.

mm (in.) (L=Length)					
Code	Shape	Code	Shape	Code	Shape
(A)	 <p><math>\varnothing=5</math> (0.20) L=14 (0.55)</p>	(B)	 <p><math>\varnothing=6</math> (0.24) L=14 (0.55)</p>	(C)	 <p><math>\varnothing=5</math> (0.20) L=16 (0.63)</p>
(D)	 <p><math>\varnothing=6</math> (0.24) L=20 (0.79)</p>	(E)	 <p><math>\varnothing=7</math> (0.28) L=20 (0.79)</p>	(F)	 <p><math>\varnothing=6</math> (0.24) L=22 (0.87)</p>

G

B129999E01

### 2. DISCONNECT CABLE FROM NEGATIVE BATTERY TERMINAL

#### CAUTION:

Wait at least 90 seconds after disconnecting the cable from the negative (-) battery terminal to prevent airbag and seat belt pretensioner activation.

### 3. REMOVE INSTRUMENT PANEL SUB-ASSEMBLY

(a) Remove the instrument panel (see page [IP-4](#)).

### 4. REMOVE STEERING PAD ASSEMBLY (See page [RS-336](#))

### 5. REMOVE STEERING WHEEL ASSEMBLY (See page [SR-12](#))

### 6. REMOVE STEERING COLUMN COVER (See page [SR-12](#))

### 7. REMOVE SPIRAL CABLE SUB-ASSEMBLY (See page [RS-346](#))

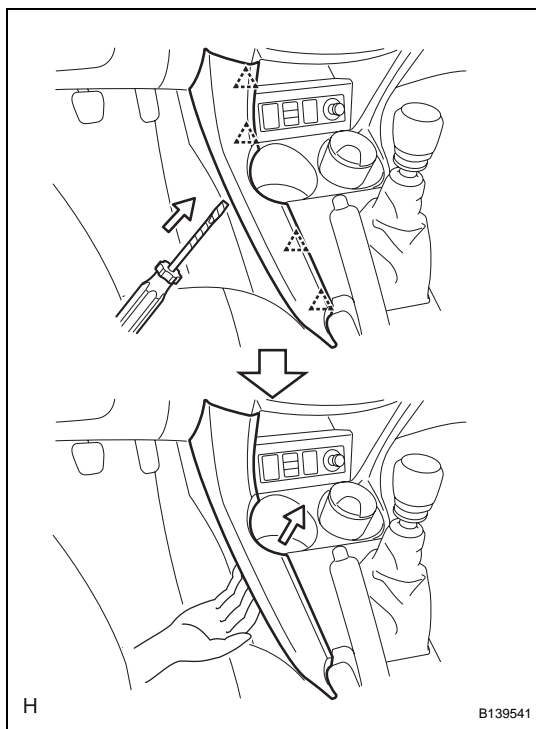
### 8. REMOVE HEADLIGHT DIMMER SWITCH ASSEMBLY

### 9. REMOVE WINDSHIELD WIPER SWITCH ASSEMBLY

### 10. REMOVE HEATER CONTROL SUB-ASSEMBLY (for Automatic Air Conditioning System) (See page [AC-241](#))

### 11. REMOVE HEATER CONTROL SUB-ASSEMBLY (for Manual Air Conditioning System) (See page [AC-243](#))

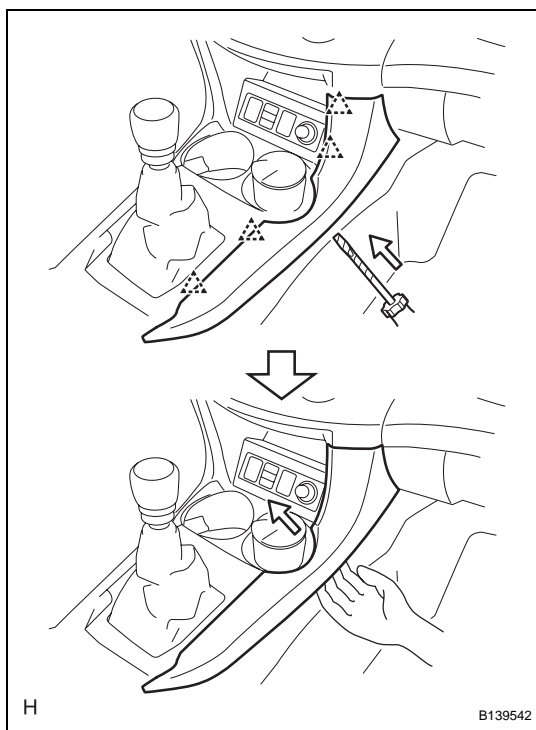
IP

**12. REMOVE NO. 1 CONSOLE UPPER PANEL GARNISH**

- (a) Using a screwdriver, detach the 4 clips and upper panel garnish.

HINT:

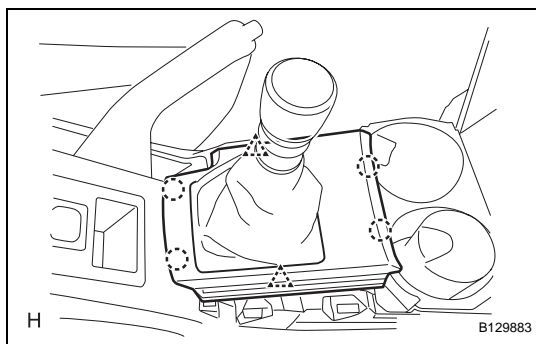
Tape the screwdriver tip before use.

**13. REMOVE NO. 2 CONSOLE UPPER PANEL GARNISH**

- (a) Using a screwdriver, detach the 4 clips and upper panel garnish.

HINT:

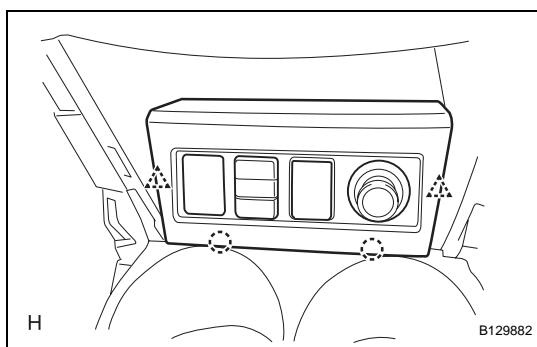
Tape the screwdriver tip before use.

**14. REMOVE UPPER CONSOLE PANEL SUB-ASSEMBLY**

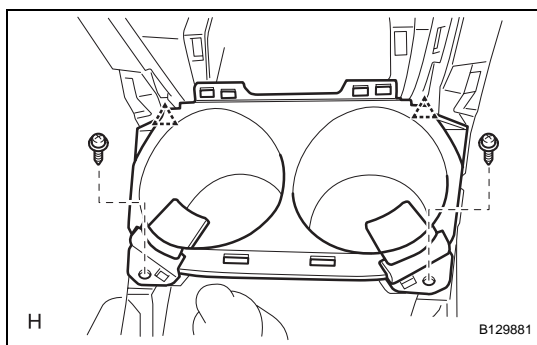
- (a) Remove the shift lever knob.  
 (b) Using a screwdriver, detach the 2 clips, 4 claws and remove the upper console panel then disconnect the connector.

HINT:

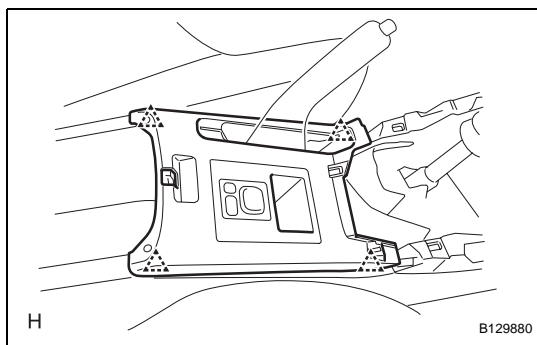
Tape the screwdriver tip before use.

**15. REMOVE SWITCH BASE**

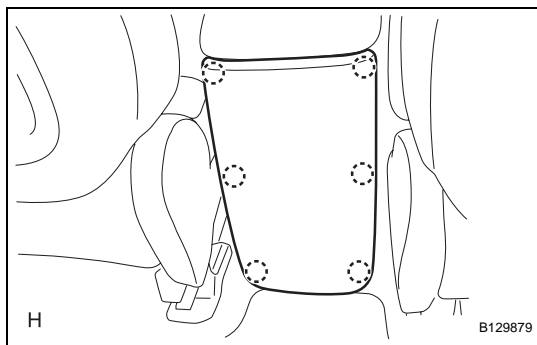
- (a) Detach the 2 clips and 2 claws.
- (b) Disconnect the connectors and remove the switch base.

**16. REMOVE CONSOLE CUP HOLDER BOX**

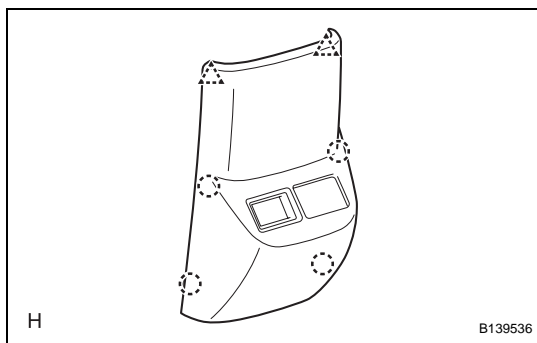
- (a) Remove the 2 screws.
- (b) Detach the 2 clips and remove the cup holder box.

**17. REMOVE UPPER REAR CONSOLE PANEL SUB-ASSEMBLY**

- (a) Using a screwdriver, detach the 4 claws and 2 clips.  
HINT:  
Tape the screwdriver tip before use.
- (b) Disconnect the connector and remove the upper rear console panel.

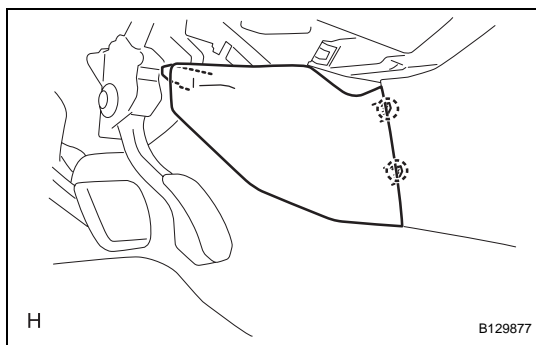
**18. REMOVE CONSOLE REAR END PANEL**

- (a) Using a screwdriver, detach the 6 claws and remove the console rear end panel.  
HINT:  
Tape the screwdriver tip before use.

**19. REMOVE CONSOLE REAR END PANEL (RSE Type)**

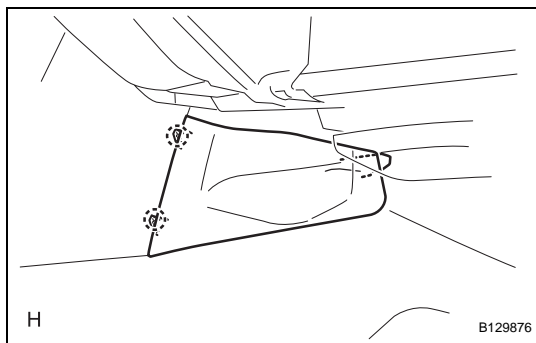
- (a) Using a screwdriver, detach the 4 claws, 2 clips and remove the console rear end panel then disconnect the connectors.  
HINT:  
Tape the screwdriver tip before use.

IP



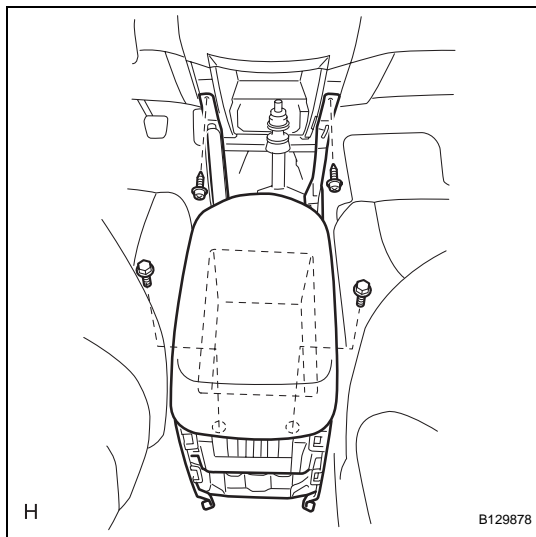
## 20. REMOVE NO. 1 INSTRUMENT PANEL BRACKET COVER INNER LH

- Detach the 2 claws and remove the instrument panel bracket cover.



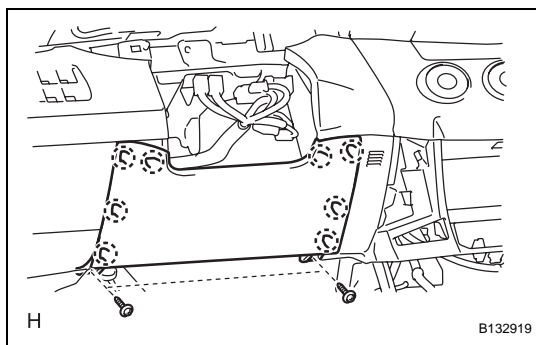
## 21. REMOVE NO. 1 INSTRUMENT PANEL BRACKET COVER INNER RH

- Detach the 2 claws and remove the instrument panel bracket cover.



## 22. REMOVE REAR CONSOLE BOX SUB-ASSEMBLY

- Remove the console box carpet.
- Remove the 2 bolts and 2 screws.
- Disconnect the connector and remove the rear console box.

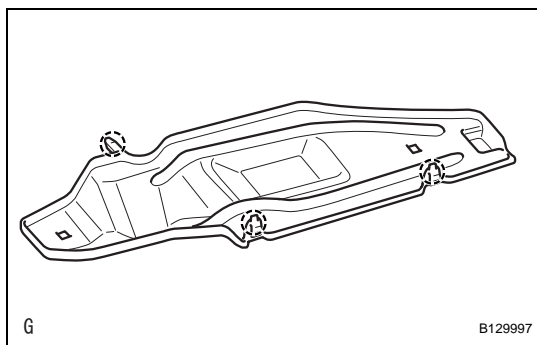


## 23. REMOVE LOWER INSTRUMENT PANEL FINISH PANEL

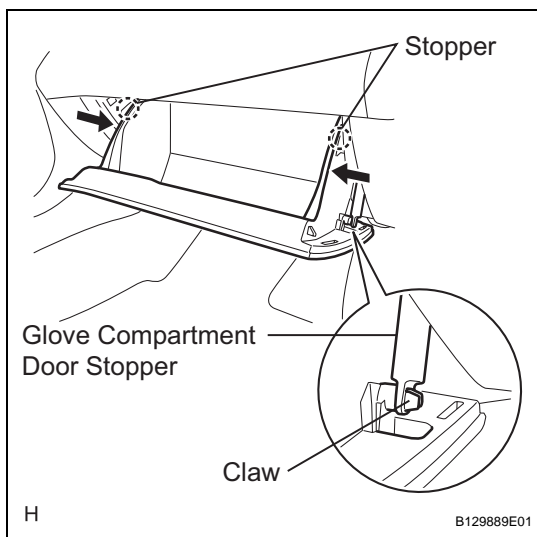
- Remove the 2 screws.
- Using a screwdriver detach the 8 claws and remove the lower instrument panel finish panel.

HINT:

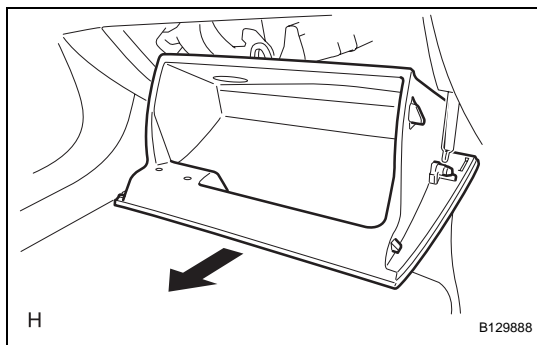
Tape the screwdriver tip before use.

**24. REMOVE NO. 2 INSTRUMENT PANEL UNDER COVER SUB-ASSEMBLY**

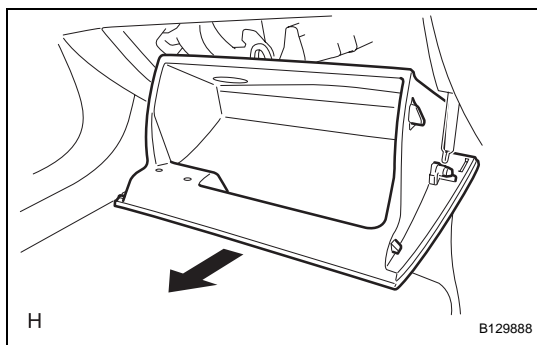
- (a) Detach the 2 claws and remove the instrument panel under cover.

**25. REMOVE GLOVE COMPARTMENT DOOR ASSEMBLY**

- (a) Open the glove compartment door.  
(b) Detach the claw from the glove compartment door stopper.  
(c) While pushing in the sides of the glove compartment door as indicated by the arrows in the illustration, open the door to release it from the 2 stoppers.

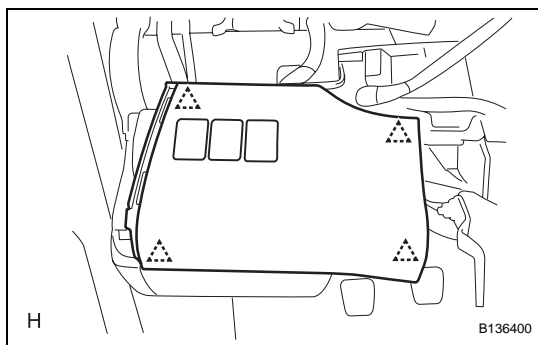


- (d) Open the door until it is horizontal.

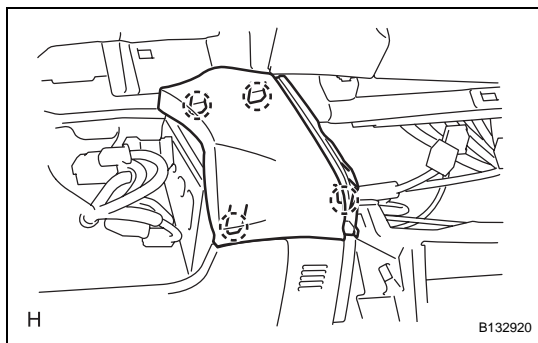


- (e) Pull the glove compartment door toward the rear of the vehicle to detach the 2 hinges and remove the glove compartment door.

IP

**26. REMOVE NO. 1 SWITCH HOLE BASE**

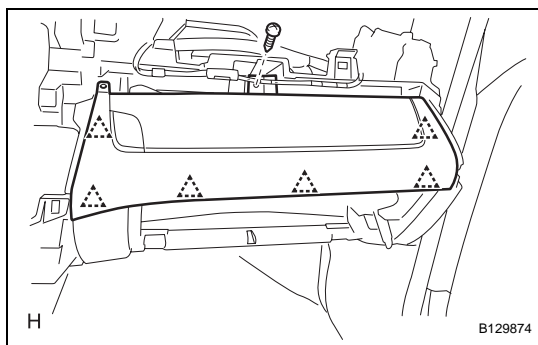
- (a) Using a screwdriver, detach the 4 clips.
- (b) Disconnect the connectors and remove the switch hole base.

**27. REMOVE INSTRUMENT PANEL SAFETY PAD COVER**

- (a) Using a screwdriver, detach the 4 claws and remove the instrument panel safety pad cover.

HINT:

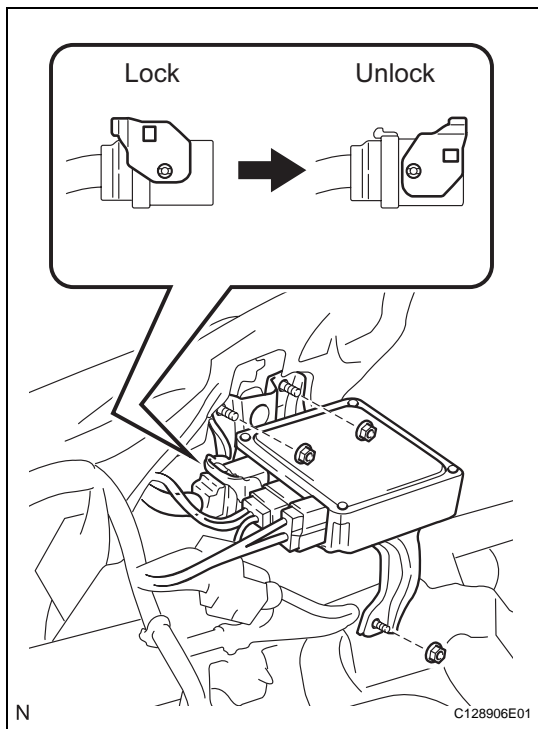
Tape the screwdriver tip before use.

**28. REMOVE INSTRUMENT PANEL BOX**

- (a) Remove the screw.
- (b) Using a screwdriver, detach the 6 clips and remove the instrument panel box.

HINT:

Tape the screwdriver tip before use.

**29. REMOVE POWER STEERING ECU ASSEMBLY**

- (a) Disconnect the connectors.
- (b) Remove the 3 nuts and ECU.

**30. REMOVE LOWER INSTRUMENT PANEL**

- (a) Remove the 2 bolts, 3 screws and 2 clips.
- (b) Disconnect the connectors and clamps and remove the lower instrument panel.

