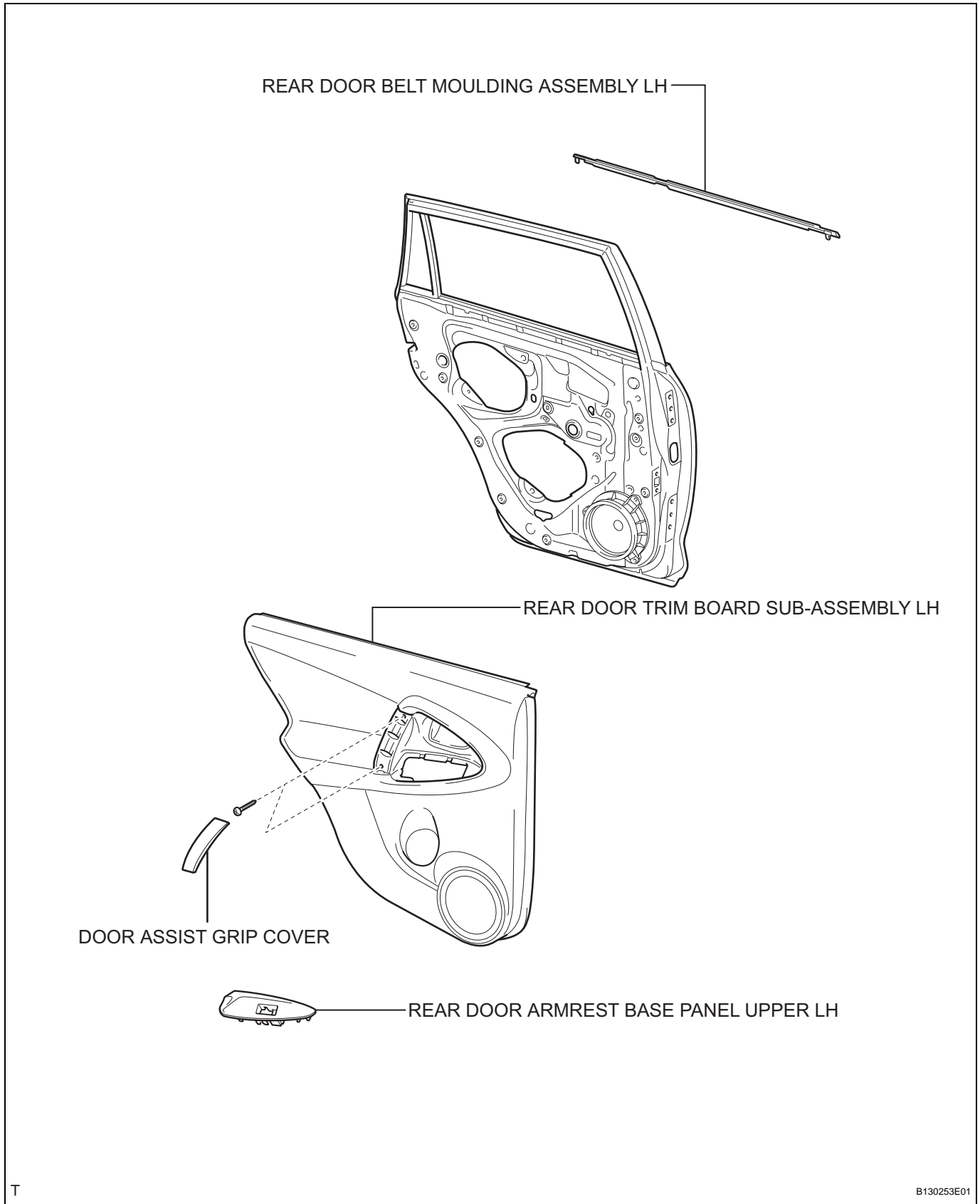


REAR DOOR BELT MOULDING

COMPONENTS



ET

REMOVAL

HINT:

- Use the same procedures for the RH side and LH side.
- The procedures listed below are for the LH side.

1. DISCONNECT CABLE FROM NEGATIVE BATTERY TERMINAL

CAUTION:

Wait at least 90 seconds after disconnecting the cable from the negative (-) battery terminal to prevent airbag and seat belt pretensioner activation.

2. REMOVE REAR DOOR ARMREST BASE PANEL UPPER LH (See page ED-40)

3. REMOVE REAR DOOR TRIM BOARD SUB-ASSEMBLY LH (See page ED-40)

4. REMOVE REAR DOOR BELT MOULDING ASSEMBLY LH

- Put protective tape under the belt moulding.
- Using a moulding remover, detach the claws to remove the belt moulding as shown in the illustration.

HINT:

Tape the remover tip before use.

NOTICE:

Be careful when removing the belt moulding as there are claws attached to the front and rear ends of the belt moulding.

