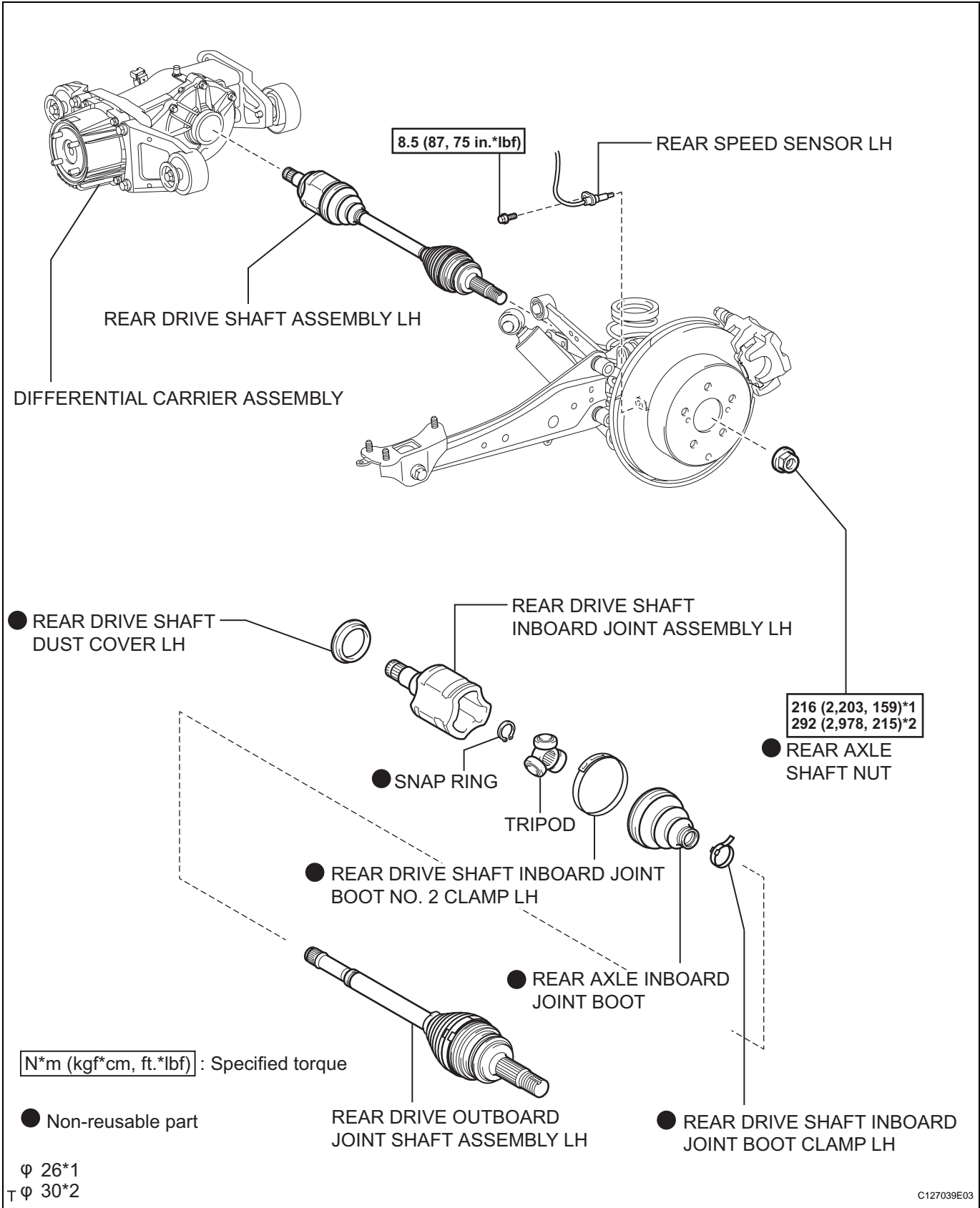


# REAR DRIVE SHAFT ASSEMBLY

## COMPONENTS

DS



## REMOVAL

### HINT:

- Use the same procedures for the RH side and LH side.
- The procedures listed below are for the LH side.

### 1. DISCONNECT CABLE FROM NEGATIVE BATTERY TERMINAL

#### CAUTION:

Wait at least 90 seconds after disconnecting the cable from the negative (-) battery terminal to prevent airbag and seat belt pretensioner activation.

### 2. DRAIN DIFFERENTIAL OIL (See page [DF-10](#))

### 3. REMOVE REAR WHEEL

### 4. REMOVE TAILPIPE ASSEMBLY (See page [EX-2](#))

### 5. REMOVE CENTER EXHAUST PIPE ASSEMBLY (See page [EX-2](#))

### 6. REMOVE PROPELLER WITH CENTER BEARING SHAFT ASSEMBLY (See page [PR-3](#))

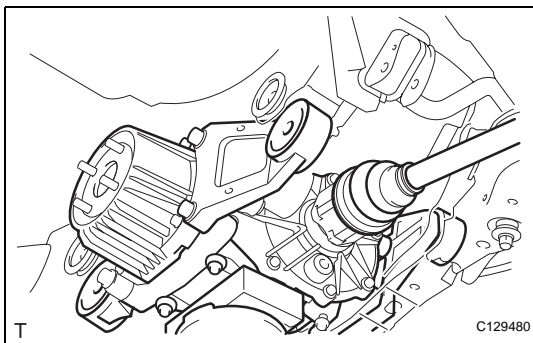
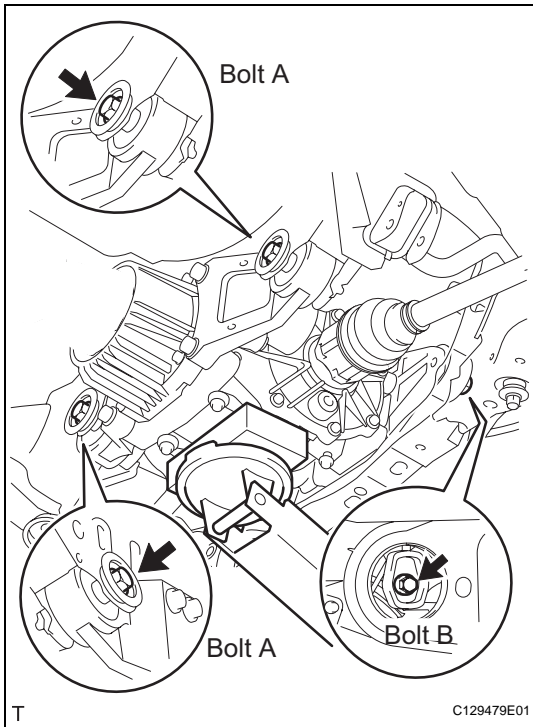
### 7. REMOVE REAR AXLE SHAFT NUT (See page [AH-17](#))

### 8. DISCONNECT DIFFERENTIAL CARRIER ASSEMBLY

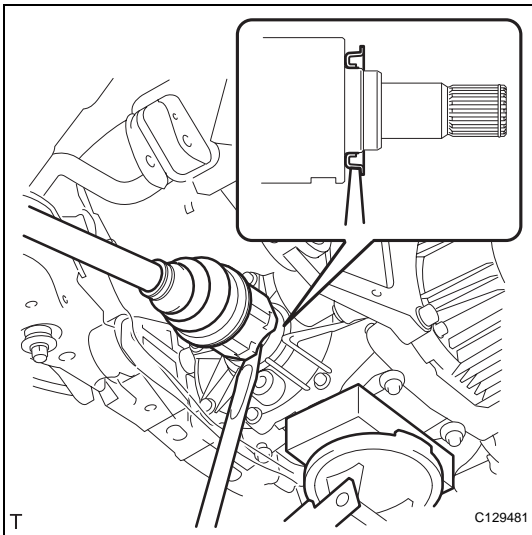
- Support the rear differential carrier with a transmission jack or equivalent.
- Fix the nuts in place and remove bolt A, bolt B and bolt C.

#### NOTICE:

Do not loosen the nuts. Loosen the bolts.



- Slowly lower the jack and then tilt the rear differential carrier as shown in the illustration.

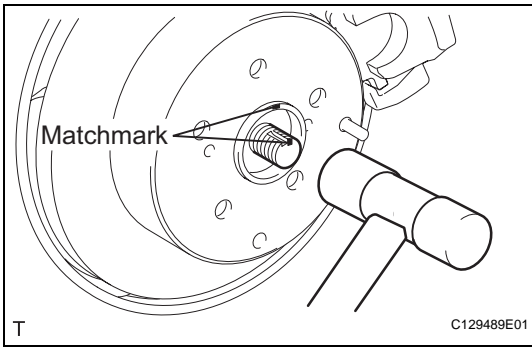


- (d) Set the tip of the tire lever to the position on the rear drive shaft inboard joint shown in the illustration. Then, using the ribbed part of the rear differential carrier as a fulcrum, disconnect the left and right rear drive shafts.

**NOTICE:**

**Do not scratch the rear drive shaft dust cover.**

9. **DISCONNECT SKID CONTROL SENSOR WIRE (for 2WD) (See page [BC-198](#))**
10. **DISCONNECT REAR SPEED SENSOR LH (for 4WD) (See page [BC-205](#))**

**DS****11. REMOVE REAR DRIVE SHAFT ASSEMBLY LH**

- (a) Put matchmarks on the drive shaft and the axle hub.

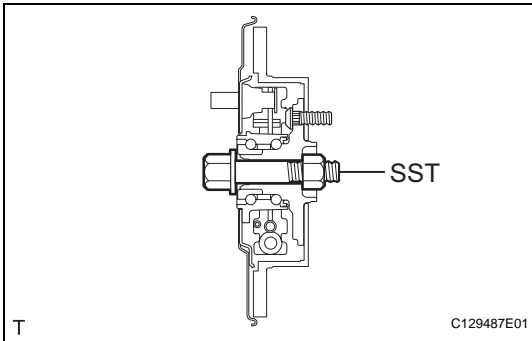
**NOTICE:**

**Do not punch the marks.**

- (b) Using a plastic-faced hammer, separate the drive shaft from the axle hub.

**NOTICE:**

**Be careful not to damage the boot and speed sensor rotor. Do not excessively push out the drive shaft from the axle.**

**12. FIX REAR DRIVE SHAFT ASSEMBLY****NOTICE:**

**The hub bearing could be damaged if it is subjected to the vehicle weight, such as when moving the vehicle with the drive shaft removed. Therefore, if it is absolutely necessary to place the vehicle weight on the hub bearing, first support it with SST.**

**SST 09608-16042 (09608-02021, 09608-02041)**