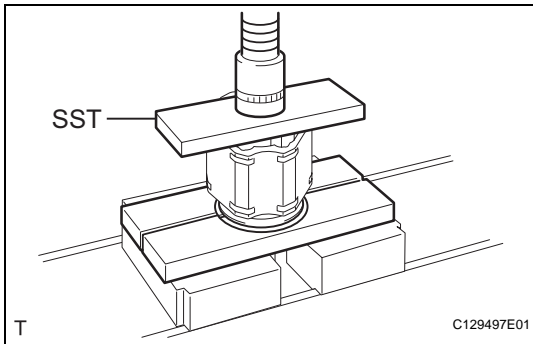


REASSEMBLY

HINT:

- Use the same procedures for the RH side and LH side.
- The procedures listed below are for the LH side.



1. INSTALL REAR DRIVE SHAFT DUST COVER LH

- (a) Using SST and a press, press in a new drive shaft dust cover.

SST 09527-10011

NOTICE:

- The dust cover should be installed completely.
- Be careful not to damage the dust cover.

2. INSTALL REAR DRIVE SHAFT INBOARD JOINT SHAFT SNAP RING LH

- (a) Install a new hole snap ring.

3. INSTALL REAR DRIVE SHAFT INBOARD JOINT ASSEMBLY LH

- (a) Wrap the spline of the outboard joint shaft with vinyl tape to prevent the boots from being damaged.
- (b) Install new parts to the outboard joint shaft in the following order.
- (1) Inboard joint boot clamp
 - (2) No. 2 inboard joint boot clamp
 - (3) Inboard joint boot
- (c) Place the beveled side of the tripod axial spline toward the outboard joint.
- (d) Align the matchmarks placed before removal.
- (e) Using a brass bar and hammer, tap the tripod joint onto the drive shaft.

NOTICE:

- Do not tap the rollers.
- Be sure to install the tripod joint in the correct direction.

- (f) Pack the inboard joint shaft and boot with grease from the boot kit.

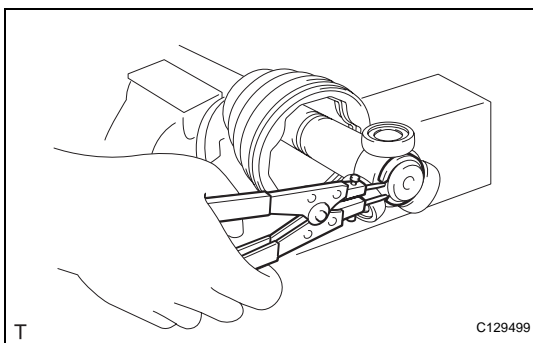
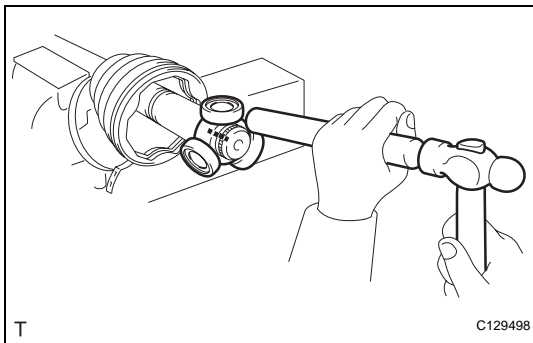
Standard grease capacity:

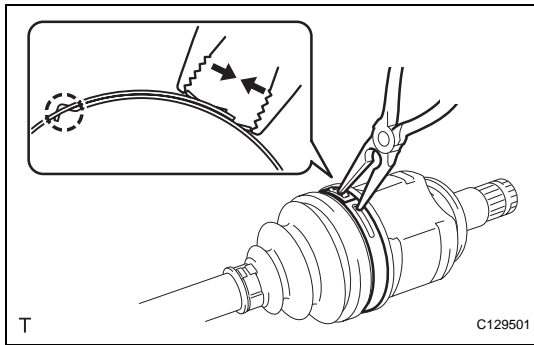
86 to 96 g (3.0 to 3.4 oz.)

- (g) Using a snap ring expander, install a new shaft snap ring.
- (h) Align the matchmarks, and install the inboard joint to the outboard joint shaft.

4. INSTALL REAR AXLE INBOARD JOINT BOOT

- (a) Install the inboard joint boot to the inboard joint.



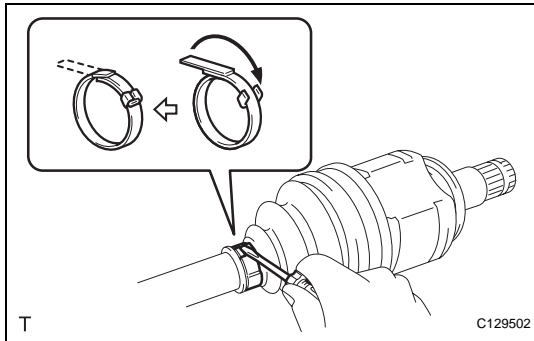


5. INSTALL REAR DRIVE SHAFT INBOARD JOINT BOOT NO. 2 CLAMP LH

- (a) Using needle-nose pliers, install the No. 2 inboard joint boot clamp, as shown in the illustration.

NOTICE:

Be careful not to damage the boot.

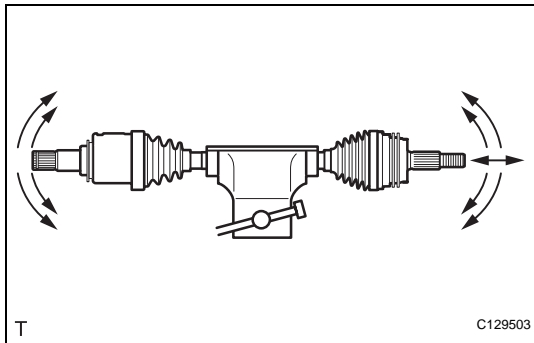


6. INSTALL REAR DRIVE SHAFT INBOARD JOINT BOOT CLAMP LH

- (a) Using a screwdriver, install the inboard joint boot clamp, as shown in the illustration.

NOTICE:

Be careful not to damage the boot.



7. INSPECT REAR DRIVE SHAFT

- (a) Check that there is no severe play in the radial direction of the outboard joint.
- (b) Check that the inboard joint slides smoothly in the thrust direction.
- (c) Check that there is no severe play in the radial direction of the inboard joint.

- (d) Check the boots for damage.

NOTICE:

Keep the drive shaft assembly level during inspection.

HINT:

For dimension (A), refer to the following values.

Reference value:

733.8 mm (28.890 in.)

