

## REMOVAL

### HINT:

- Use the same procedures for the LH side and RH side.
- The procedures listed below are for the LH side.

### 1. REMOVE REAR WHEEL

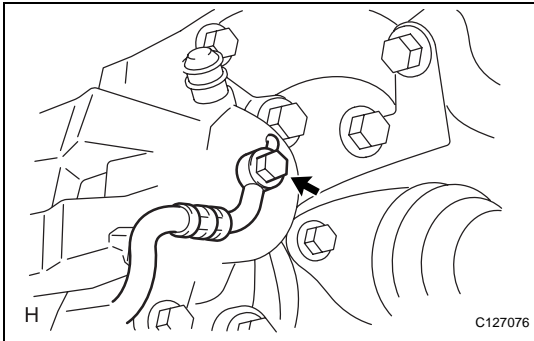
### 2. DRAIN BRAKE FLUID

#### NOTICE:

Wash off brake fluid immediately if it comes in contact with any painted surface.

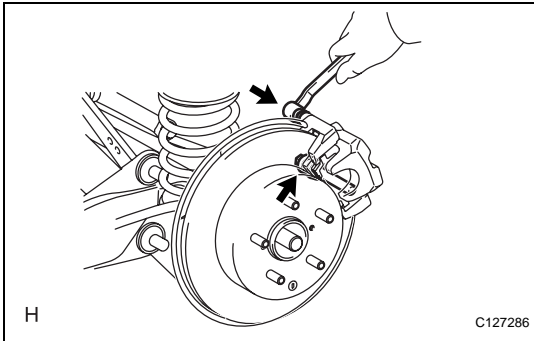
### 3. DISCONNECT REAR FLEXIBLE HOSE LH

- (a) Remove the union bolt and gasket(s).
- (b) Disconnect the flexible hose from the brake cylinder.



### 4. REMOVE REAR DISC BRAKE CYLINDER ASSEMBLY LH

- (a) Remove the 2 bolts and cylinder.



## DISASSEMBLY

### HINT:

- Use the same procedures for the LH side and RH side.
- The procedures listed below are for the LH side.

#### 1. REMOVE REAR DISC BRAKE PAD

- (a) Remove the 2 disc brake pads.

#### 2. REMOVE ANTI-SQUEAL SHIM

- (a) Remove the shims from each pad.

#### 3. REMOVE PAD WEAR INDICATOR PLATE

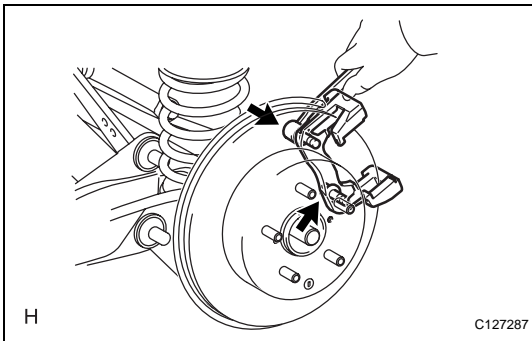
- (a) Remove the indicator plates from each pad.

#### 4. REMOVE REAR DISC BRAKE PAD SUPPORT PLATE

- (a) Remove the 2 plates from the brake cylinder mounting.

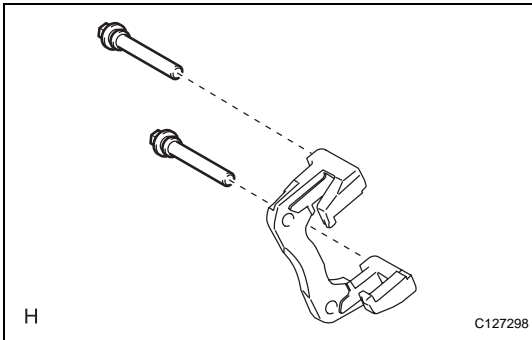
#### 5. REMOVE REAR DISC BRAKE CYLINDER MOUNTING LH

- (a) Remove the 2 bolts and cylinder mounting.



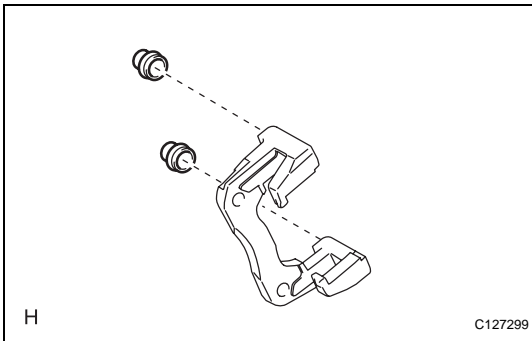
#### 6. REMOVE REAR DISC BRAKE CYLINDER SLIDE PIN

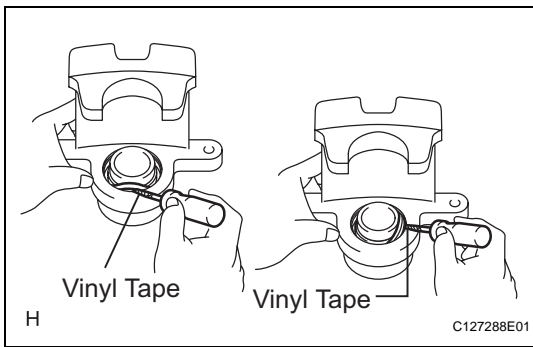
- (a) Remove the 2 pins (upper and lower) from the mounting.



#### 7. REMOVE REAR DISC BRAKE BUSH DUST BOOT

- (a) Remove the 2 boots from the mounting.



**8. REMOVE CYLINDER BOOT**

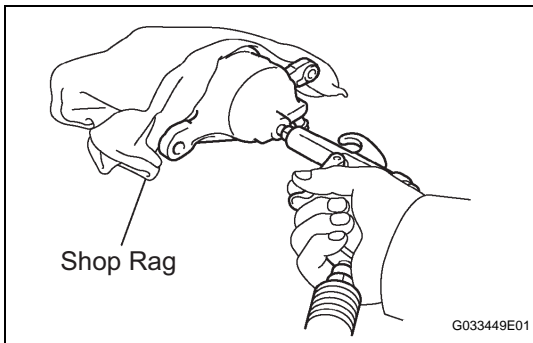
- (a) Using a screwdriver, pry out the set ring and boot.

**NOTICE:**

**Be careful not to damage the brake piston and cylinder.**

**HINT:**

Tape the screwdriver tip before use.

**9. REMOVE REAR DISC BRAKE PISTON**

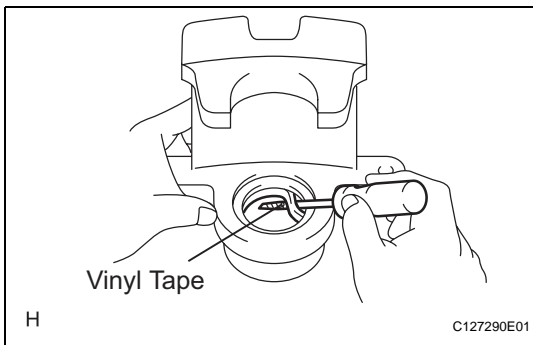
- (a) Place a shop rag or piece of cloth between the piston and disc brake cylinder.  
 (b) Apply compressed air to remove the piston from the disc brake cylinder.

**CAUTION:**

**Do not place your fingers in front of the piston when applying compressed air.**

**NOTICE:**

**Be careful not to spatter the brake fluid.**

**10. REMOVE PISTON SEAL**

- (a) Using a screwdriver, pry out the seal from the cylinder.

**NOTICE:**

**Be careful not to damage the inner cylinder and piston seal groove.**

**HINT:**

Tape the screwdriver tip before use.

**11. REMOVE REAR DISC BRAKE BLEEDER PLUG**

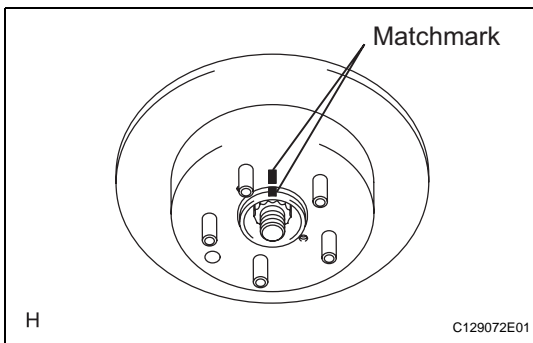
- (a) Remove the bleeder plug cap and bleeder plug from the cylinder.

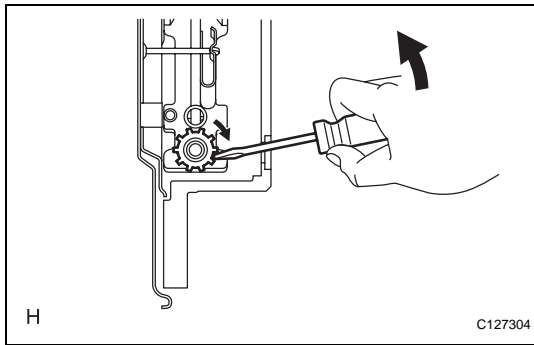
**12. REMOVE PARKING BRAKE SHOE ADJUSTING HOLE PLUG**

- (a) Remove the shoe adjusting hole plug from the rear disc.

**13. REMOVE REAR DISC**

- (a) Put matchmarks on the disc and axle hub.  
 (b) Release the parking brake.





- (c) Turn the shoe adjuster until the disc turns freely, and then remove the disc.
- (d) Install the shoe adjusting hole plug from the rear disc.