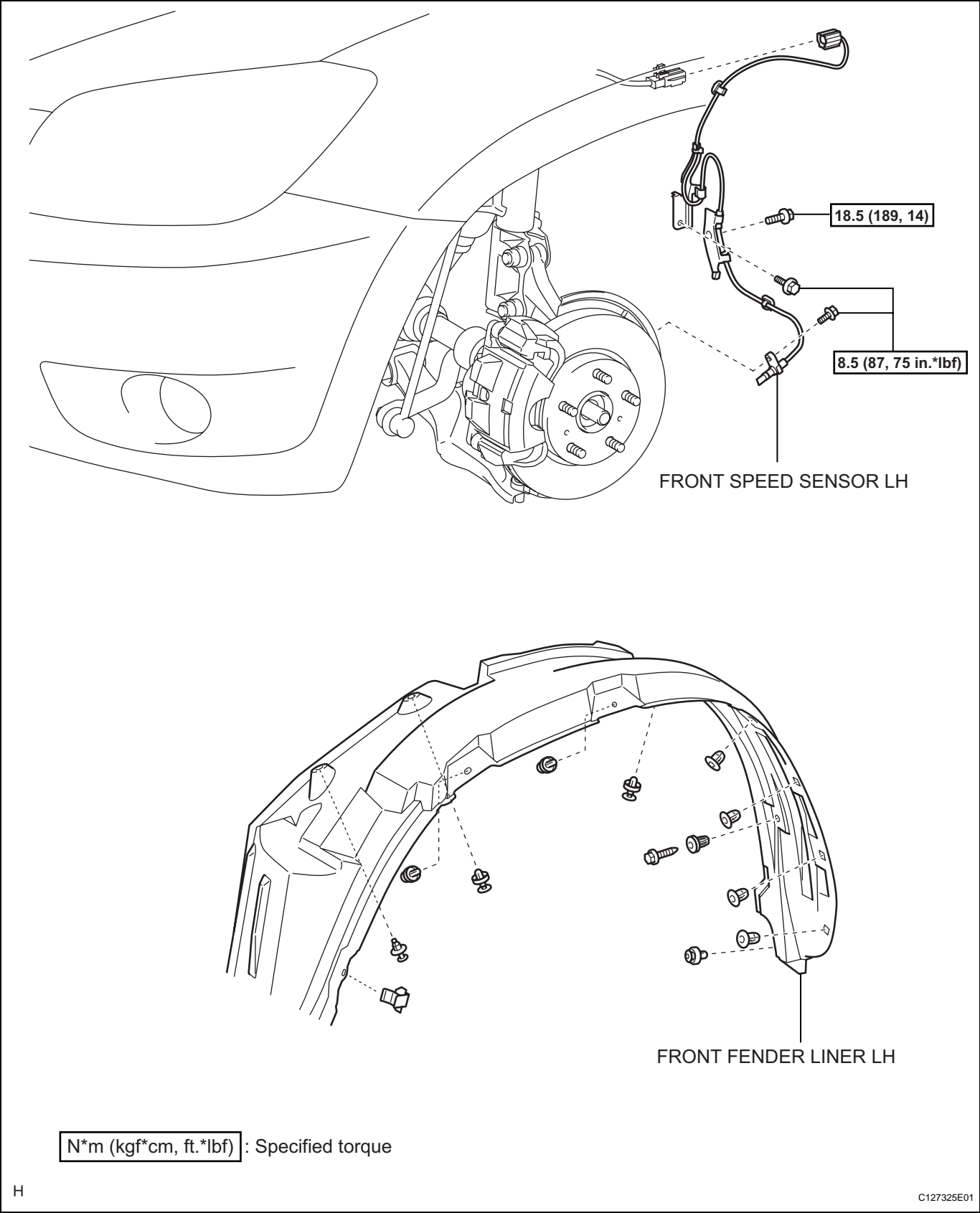


# FRONT SPEED SENSOR

## COMPONENTS

BC



## REMOVAL

### HINT:

- Use the same procedures for the LH side and RH side.
- The procedures listed below are for the LH side.

### 1. DISCONNECT CABLE FROM NEGATIVE BATTERY TERMINAL

#### CAUTION:

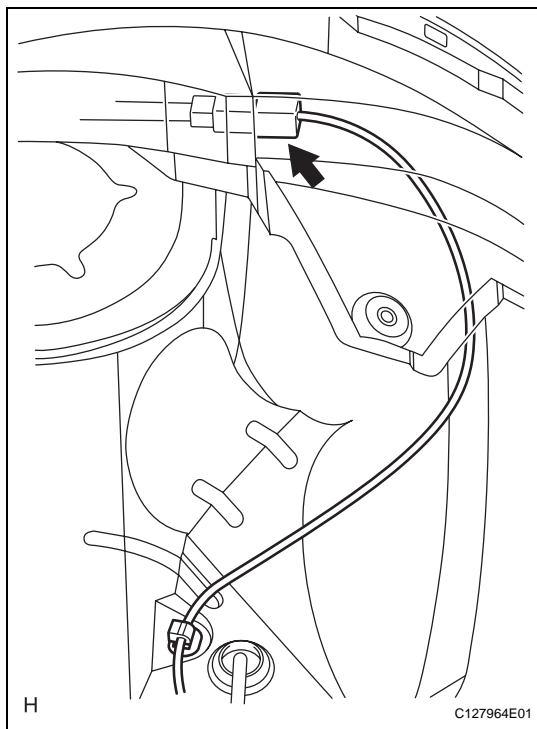
Wait at least 90 seconds after disconnecting the cable from the negative (-) battery terminal to prevent airbag and seat belt pretensioner activation.

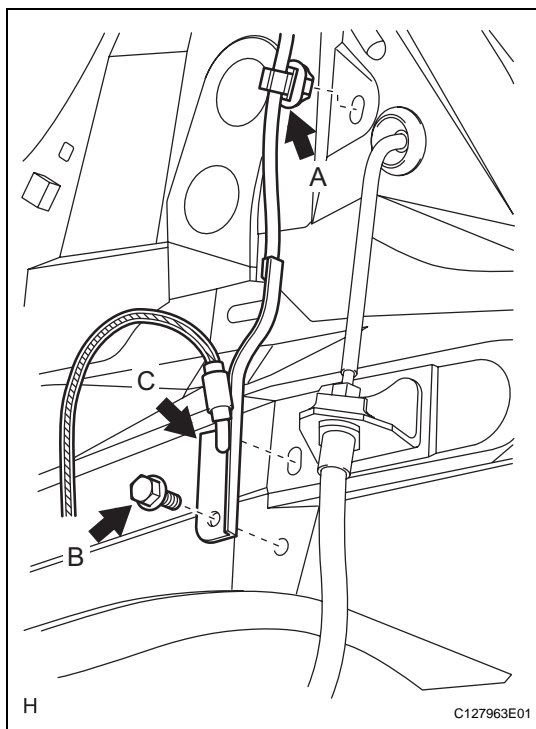
### 2. REMOVE FRONT WHEEL

### 3. REMOVE FRONT FENDER LINER LH

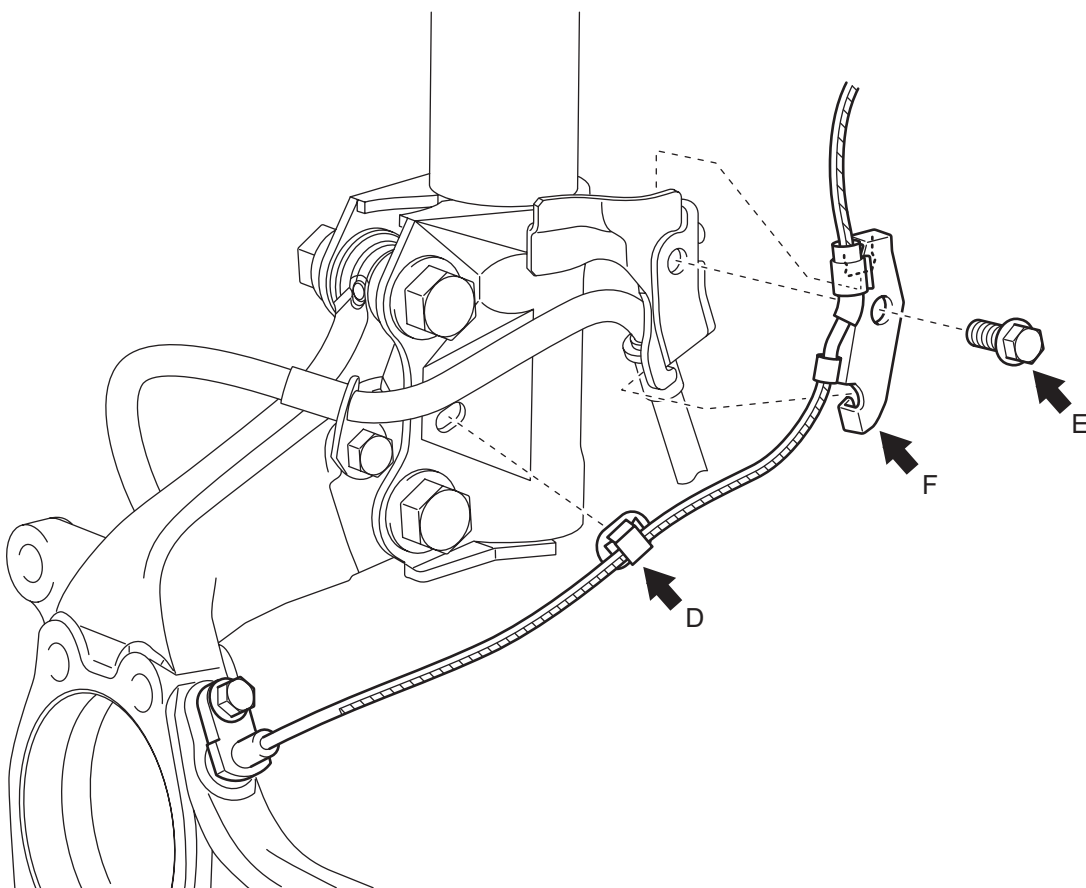
### 4. REMOVE FRONT SPEED SENSOR LH

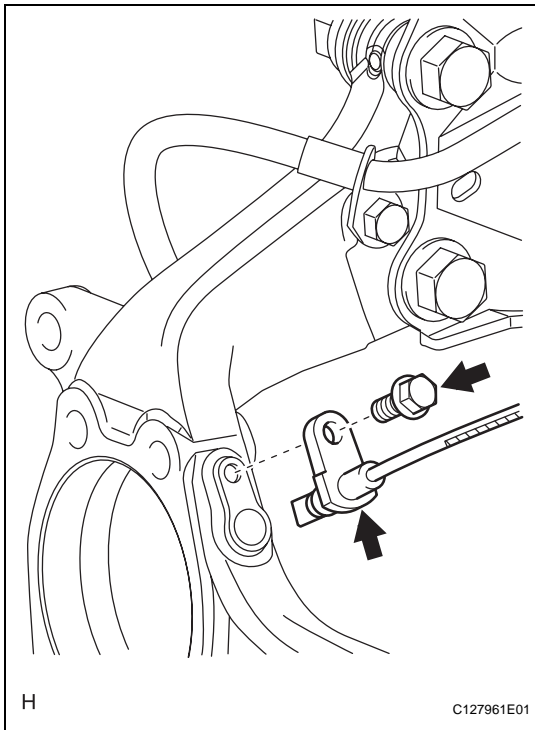
- (a) Disconnect the sensor connector.





- (b) Remove the sensor clip (labeled A), bolt (labeled B) and sensor clamp (labeled C).
- (c) Remove the sensor clip (labeled D), bolt (labeled E) and sensor clamp (labeled F).





- (d) Remove the bolt and sensor body from the knuckle.  
**NOTICE:**  
Keep the sensor tip and sensor installation hole free from foreign matter.